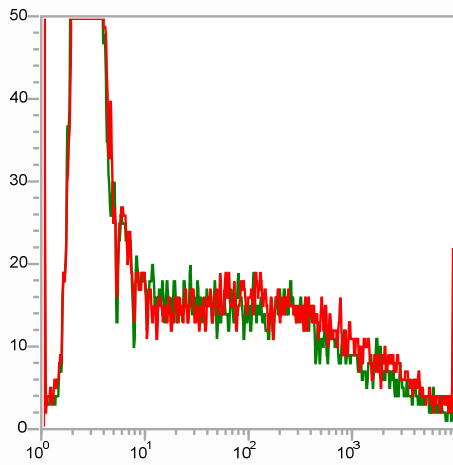


Results <Default Table>

FCS Key 1	FCS Key 2	Gate	Region	Count	%Gated	X Median	X Mean	Error Message
HEK NT	no trt	Ungated	A	21062	59.06	327.81	342.47	
HEK NT	no trt	A	B	31	0.15	38.54	127.05	
HEK EV	DMSO	Ungated	A	20277	62.25	381.97	398.62	
HEK EV	DMSO	A	B	20	0.10	38.89	277.70	
HEK EV	MG132 invivo	Ungated	A	20282	55.93	352.27	374.79	
HEK EV	MG132 invivo	A	B	15	0.07	19.63	42.20	
HEK EGFP	DMSO	Ungated	A	20346	65.18	358.66	375.31	
HEK EGFP	DMSO	A	B	9469	46.54	137.00	747.57	
HEK EGFP	MG132 invivo	Ungated	A	20258	57.69	368.47	388.15	
HEK EGFP	MG132 invivo	A	B	8866	43.77	114.44	626.50	
HEK A20 wt	DMSO	Ungated	A	20325	66.35	352.27	374.35	
HEK A20 wt	DMSO	A	B	10400	51.17	46.56	308.52	
HEK A20 wt	MG132 invivo	Ungated	A	20530	54.50	330.77	347.53	
HEK A20 wt	MG132 invivo	A	B	9922	48.33	42.94	292.49	
HEK A20 L236P	DMSO	Ungated	A	20482	66.00	342.89	362.62	
HEK A20 L236P	DMSO	A	B	6114	29.85	31.91	149.91	
HEK A20 L236P	MG132 invivo	Ungated	A	20295	56.05	358.66	385.22	
HEK A20 L236P	MG132 invivo	A	B	6974	34.36	45.32	214.49	
HEK A20 N102S	DMSO	Ungated	A	20359	68.67	345.99	364.06	
HEK A20 N102S	DMSO	A	B	9710	47.69	44.91	299.71	
HEK A20 N102S	MG132 invivo	Ungated	A	20260	52.72	355.45	377.89	
HEK A20 N102S	MG132 invivo	A	B	8913	43.99	42.17	259.96	
HEK A20 F127C	DMSO	Ungated	A	20554	64.79	321.97	343.90	
HEK A20 F127C	DMSO	A	B	9044	44.00	39.60	229.59	
HEK A20 F127C	MG132 invivo	Ungated	A	20449	57.75	355.45	374.06	
HEK A20 F127C	MG132 invivo	A	B	8590	42.01	39.60	253.90	
HEK A20 L275P	DMSO	Ungated	A	20255	66.41	349.12	375.28	
HEK A20 L275P	DMSO	A	B	5584	27.57	28.90	125.93	
HEK A20 L275P	MG132 invivo	Ungated	A	20433	46.78	361.90	392.25	
HEK A20 L275P	MG132 invivo	A	B	6615	32.37	39.60	165.89	
HEK A20 L277	DMSO	Ungated	A	20190	67.99	371.80	399.74	
HEK A20 L277	DMSO	A	B	6432	31.86	31.62	60.19	
HEK A20 L277	MG132 invivo	Ungated	A	20352	39.04	371.80	396.64	
HEK A20 L277	MG132 invivo	A	B	8171	40.15	50.03	115.53	

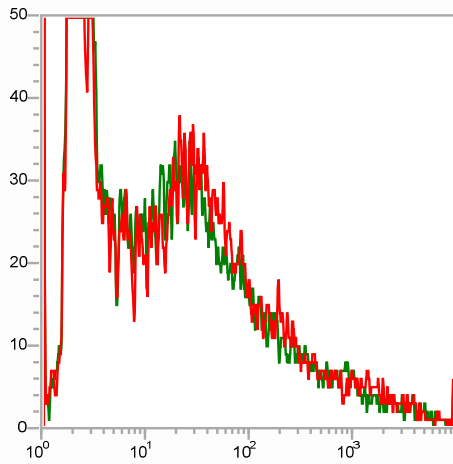
Overlay 1



- HEK EGFP DMSO
- HEK EGFP MG132 invivo

FL1-H

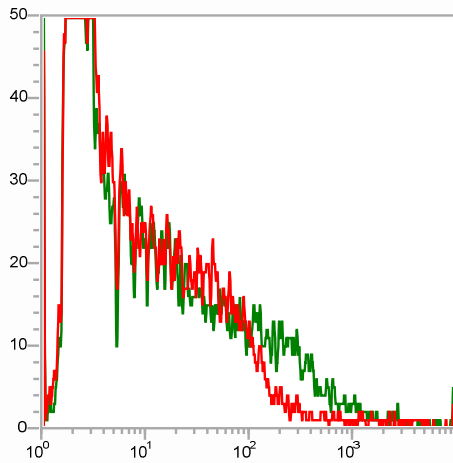
Overlay 2



- HEK A20 wt DMSO
- HEK A20 wt MG132 invivo

FL1-H

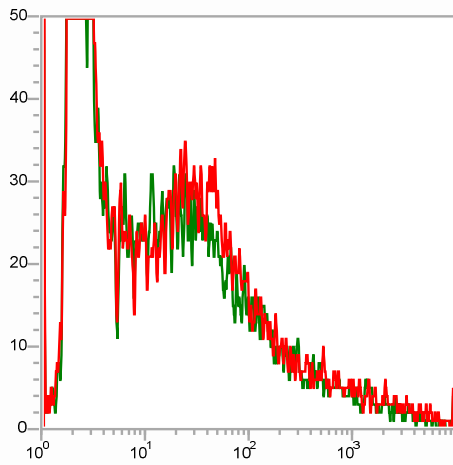
Overlay 3



- HEK A20 L236P DMSO
- HEK A20 L236P MG132 invivo

FL1-H

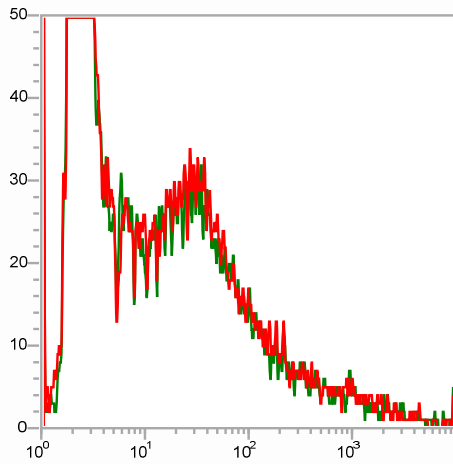
Overlay 4



HEK A20 N102S DMSO
HEK A20 N102S MG132 invivo

FL1-H

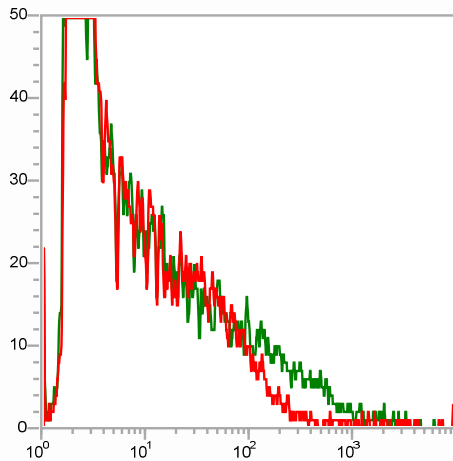
Overlay 5



HEK A20 F127C DMSO
HEK A20 F127C MG132 invivo

FL1-H

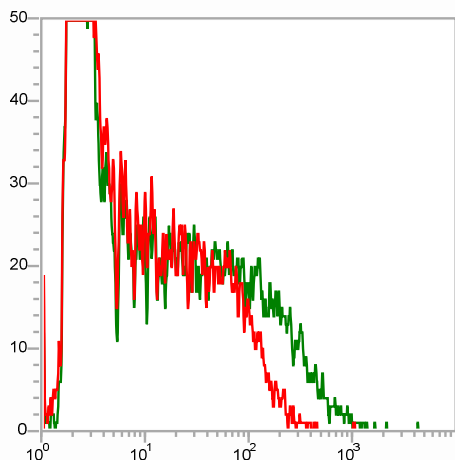
Overlay 6



HEK A20 L275P DMSO
HEK A20 L275P MG132 invivo

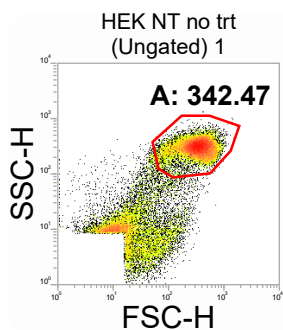
FL1-H

Overlay 7

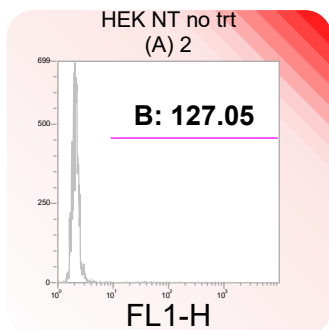


█ HEK A20 L277 DMSO
█ HEK A20 L277 MG132 invivo

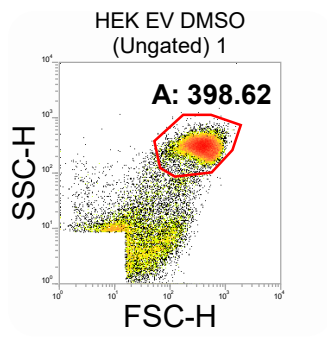
FL1-H



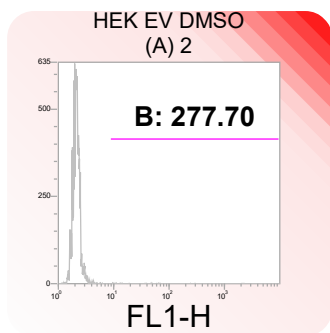
FCS Key 1	FCS Key 2	Gate	Region	Count	%Gated	X Median	X Mean	Error Message
HEK NT	no trt	Ungated A	A	21062	59.06	327.81	342.47	



FCS Key 1	FCS Key 2	Gate	Region	Count	%Gated	X Median	X Mean	Error Message
HEK NT	no trt	A	B	31	0.15	38.54	127.05	

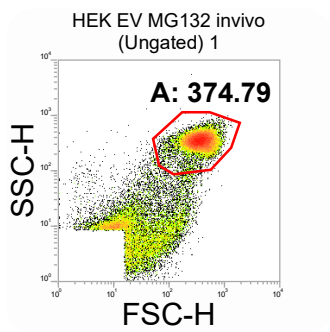


FCS Key 1	FCS Key 2	Gate	Region	Count	%Gated	X Median	X Mean	Error Message
HEK EV	DMSO	Ungated	A	20277	62.25	381.97	398.62	

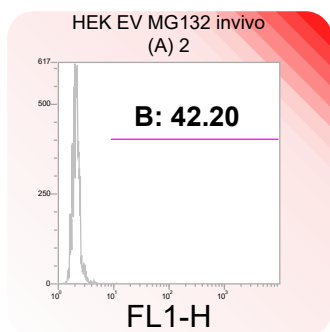


FCS Key 1	FCS Key 2	Gate	Region	Count	%Gated	X Median	X Mean	Error Message
HEK EV	DMSO	A	B	20	0.10	38.89	277.70	

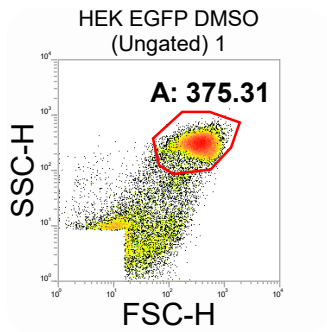
X mean is 277.7 because of 1 cell which is around 900
 Checked with lucie
 Most likely a cell that jumped from the EGFP well



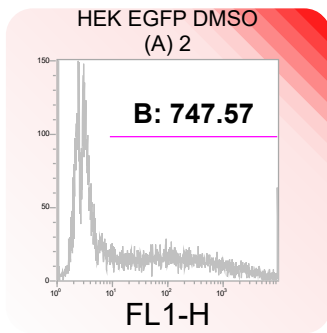
FCS Key 1	FCS Key 2	Gate	Region	Count	%Gated	X Median	X Mean	Error Message
HEK EV	MG132 invivo	Ungated	A	20282	55.93	352.27	374.79	



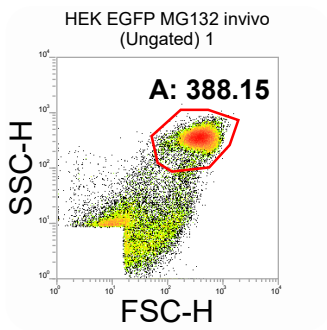
FCS Key 1	FCS Key 2	Gate	Region	Count	%Gated	X Median	X Mean	Error Message
HEK EV	MG132 invivo	A	B	15	0.07	19.63	42.20	



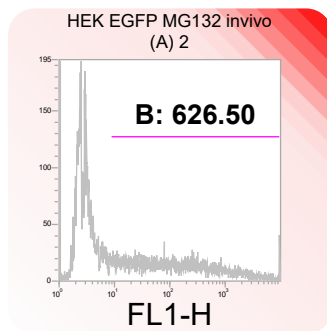
FCS Key 1	FCS Key 2	Gate	Region	Count	%Gated	X Median	X Mean	Error Message
HEK EGFP DMSO		Ungated A		20346	65.18	358.66	375.31	



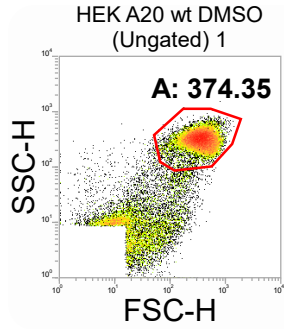
FCS Key 1	FCS Key 2	Gate	Region	Count	%Gated	X Median	X Mean	Error Message
HEK EGFP DMSO		A B		9469	46.54	137.00	747.57	



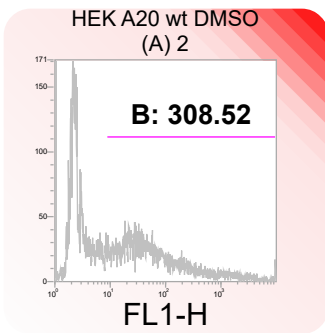
FCS Key 1	FCS Key 2	Gate	Region	Count	%Gated	X Median	X Mean	Error Message
HEK EGFP MG132 invivo		Ungated A		20258	57.69	368.47	388.15	



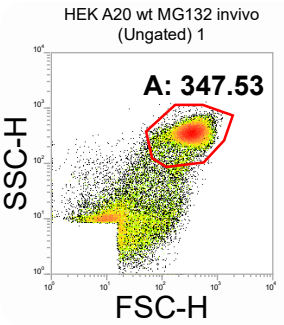
FCS Key 1	FCS Key 2	Gate	Region	Count	%Gated	X Median	X Mean	Error Message
HEK EGFP MG132 invivo		A B		8866	43.77	114.44	626.50	



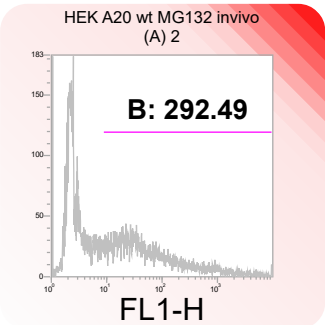
FCS Key 1	FCS Key 2	Gate	Region	Count	%Gated	X Median	X Mean	Error Message
HEK A20 wt DMSO		Ungated A		20325	66.35	352.27	374.35	



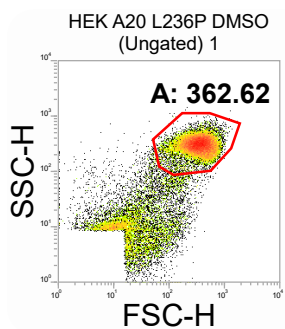
FCS Key 1	FCS Key 2	Gate	Region	Count	%Gated	X Median	X Mean	Error Message
HEK A20 wt DMSO		A B		10400	51.17	46.56	308.52	



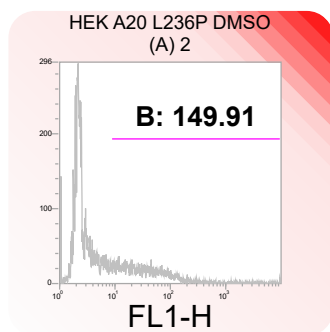
FCS Key 1	FCS Key 2	Gate	Region	Count	%Gated	X Median	X Mean	Error Message
HEK A20 wt MG132 invivo		Ungated A		20530	54.50	330.77	347.53	



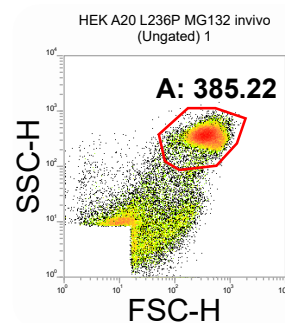
FCS Key 1	FCS Key 2	Gate	Region	Count	%Gated	X Median	X Mean	Error Message
HEK A20 wt MG132 invivo		A B		9922	48.33	42.94	292.49	



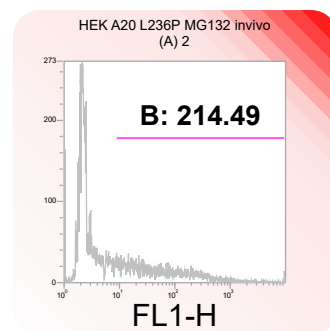
FCS Key 1	FCS Key 2	Gate	Region	Count	%Gated	X Median	X Mean	Error Message
HEK A20 L236P	DMSO	Ungated	A	20482	66.00	342.89	362.62	



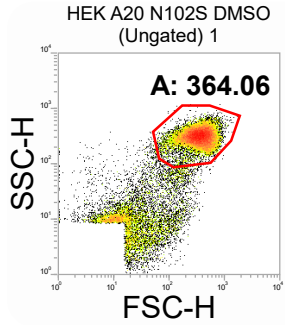
FCS Key 1	FCS Key 2	Gate	Region	Count	%Gated	X Median	X Mean	Error Message
HEK A20 L236P	DMSO	A	B	6114	29.85	31.91	149.91	



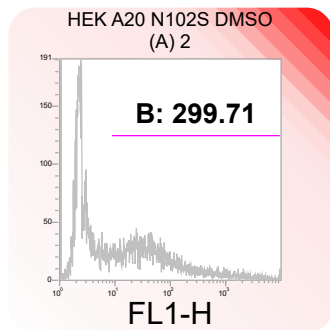
FCS Key 1	FCS Key 2	Gate	Region	Count	%Gated	X Median	X Mean	Error Message
HEK A20 L236P	MG132 invivo	Ungated	A	20295	56.05	358.66	385.22	



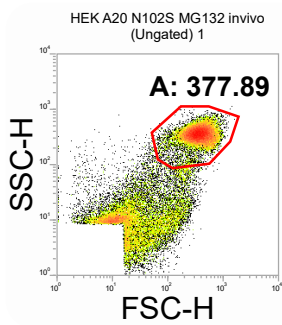
FCS Key 1	FCS Key 2	Gate	Region	Count	%Gated	X Median	X Mean	Error Message
HEK A20 L236P	MG132 invivo	A	B	6974	34.36	45.32	214.49	



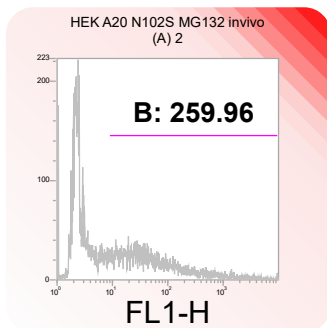
FCS Key 1	FCS Key 2	Gate	Region	Count	%Gated	X Median	X Mean	Error Message
HEK A20 N102S	DMSO	Ungated	A	20359	68.67	345.99	364.06	



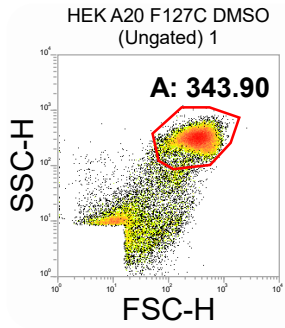
FCS Key 1	FCS Key 2	Gate	Region	Count	%Gated	X Median	X Mean	Error Message
HEK A20 N102S	DMSO	A	B	9710	47.69	44.91	299.71	



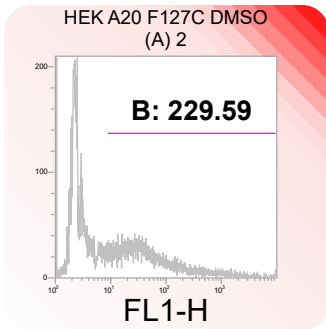
FCS Key 1	FCS Key 2	Gate	Region	Count	%Gated	X Median	X Mean	Error Message
HEK A20 N102S	MG132 invivo	Ungated	A	20260	52.72	355.45	377.89	



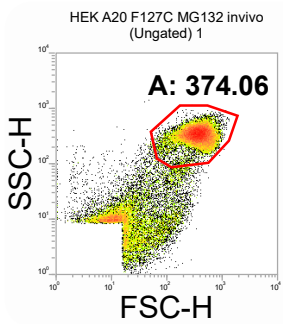
FCS Key 1	FCS Key 2	Gate	Region	Count	%Gated	X Median	X Mean	Error Message
HEK A20 N102S	MG132 invivo	A	B	8913	43.99	42.17	259.96	



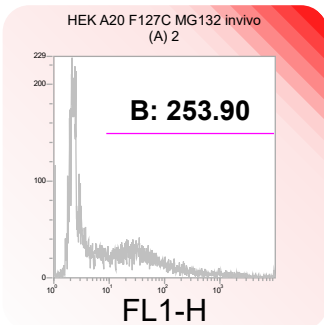
FCS Key 1	FCS Key 2	Gate	Region	Count	%Gated	X Median	X Mean	Error Message
HEK A20 F127C DMSO		Ungated A		20554	64.79	321.97	343.90	



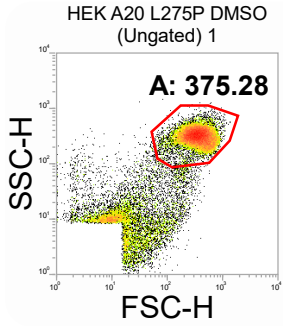
FCS Key 1	FCS Key 2	Gate	Region	Count	%Gated	X Median	X Mean	Error Message
HEK A20 F127C DMSO		A B		9044	44.00	39.60	229.59	



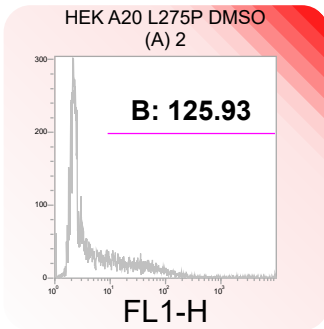
FCS Key 1	FCS Key 2	Gate	Region	Count	%Gated	X Median	X Mean	Error Message
HEK A20 F127C MG132 invivo		Ungated A		20449	57.75	355.45	374.06	



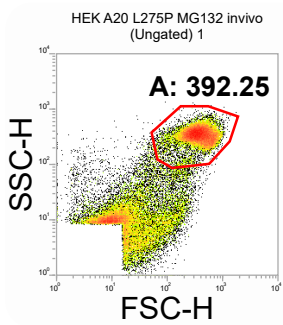
FCS Key 1	FCS Key 2	Gate	Region	Count	%Gated	X Median	X Mean	Error Message
HEK A20 F127C MG132 invivo		A B		8590	42.01	39.60	253.90	



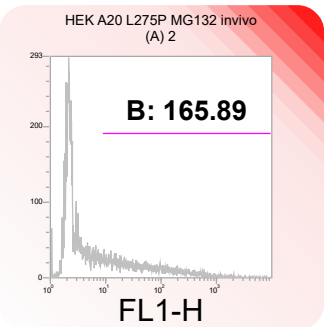
FCS Key 1	FCS Key 2	Gate	Region	Count	%Gated	X Median	X Mean	Error Message
HEK A20 L275P	DMSO	Ungated	A	20255	66.41	349.12	375.28	



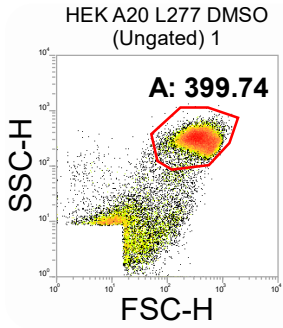
FCS Key 1	FCS Key 2	Gate	Region	Count	%Gated	X Median	X Mean	Error Message
HEK A20 L275P	DMSO	A	B	5584	27.57	28.90	125.93	



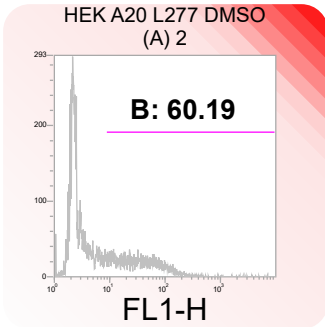
FCS Key 1	FCS Key 2	Gate	Region	Count	%Gated	X Median	X Mean	Error Message
HEK A20 L275P	MG132 invivo	Ungated	A	20433	46.78	361.90	392.25	



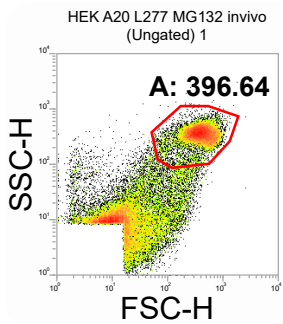
FCS Key 1	FCS Key 2	Gate	Region	Count	%Gated	X Median	X Mean	Error Message
HEK A20 L275P	MG132 invivo	A	B	6615	32.37	39.60	165.89	



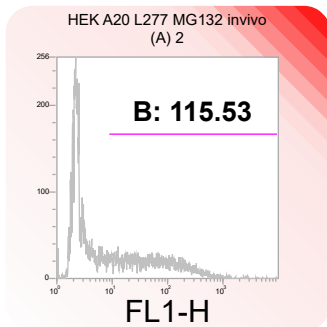
FCS Key 1	FCS Key 2	Gate	Region	Count	%Gated	X Median	X Mean	Error Message
HEK A20 L277	DMSO	Ungated	A	20190	67.99	371.80	399.74	



FCS Key 1	FCS Key 2	Gate	Region	Count	%Gated	X Median	X Mean	Error Message
HEK A20 L277	DMSO	A	B	6432	31.86	31.62	60.19	



FCS Key 1	FCS Key 2	Gate	Region	Count	%Gated	X Median	X Mean	Error Message
HEK A20 L277	MG132 invivo	Ungated	A	20352	39.04	371.80	396.64	



FCS Key 1	FCS Key 2	Gate	Region	Count	%Gated	X Median	X Mean	Error Message
HEK A20 L277	MG132 invivo	A	B	8171	40.15	50.03	115.53	