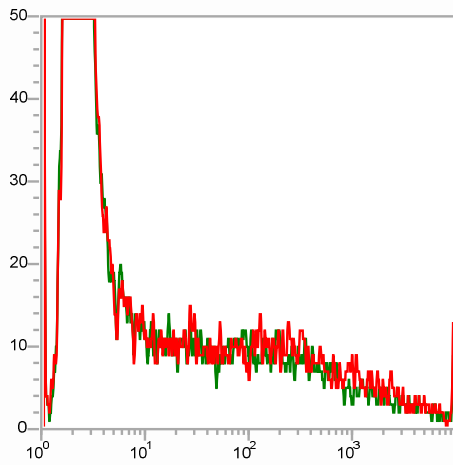


Results <Default Table>

FCS Key 1	FCS Key 2	Gate	Region	Count	%Gated	X Median	X Mean	Error Message
HEK NT	no trt	Ungated	A	20405	67.03	352.27	367.27	
HEK NT	no trt	A	B	0	0.00	ERROR	ERROR	
HEK EV	DMSO	Ungated	A	20345	67.10	358.66	373.04	
HEK EV	DMSO	A	B	3	0.01	47.83	39.70	
HEK EV	MG132 invivo	Ungated	A	20231	56.98	375.16	394.33	
HEK EV	MG132 invivo	A	B	0	0.00	ERROR	ERROR	
HEK EGFP	DMSO	Ungated	A	20236	66.69	381.97	397.50	
HEK EGFP	DMSO	A	B	6087	30.08	127.49	682.88	
HEK EGFP	MG132 invivo	Ungated	A	20264	57.86	388.91	408.50	
HEK EGFP	MG132 invivo	A	B	5651	27.89	106.50	636.63	
HEK A20 wt	DMSO	Ungated	A	20162	68.33	378.55	397.79	
HEK A20 wt	DMSO	A	B	5568	27.62	35.55	218.81	
HEK A20 wt	MG132 invivo	Ungated	A	20192	59.55	399.54	419.06	
HEK A20 wt	MG132 invivo	A	B	5651	27.99	34.29	198.08	
HEK A20 L236P	DMSO	Ungated	A	20496	61.34	378.55	390.55	
HEK A20 L236P	DMSO	A	B	4784	23.34	30.23	128.39	
HEK A20 L236P	MG132 invivo	Ungated	A	20449	53.46	365.17	382.80	
HEK A20 L236P	MG132 invivo	A	B	5083	24.86	41.05	174.51	
HEK A20 N102S	DMSO	Ungated	A	20564	59.21	375.16	388.64	
HEK A20 N102S	DMSO	A	B	6169	30.00	40.32	214.90	
HEK A20 N102S	MG132 invivo	Ungated	A	20386	70.16	355.45	372.58	
HEK A20 N102S	MG132 invivo	A	B	6753	33.13	36.19	206.81	
HEK A20 F127C	DMSO	Ungated	A	20349	62.53	392.42	408.04	
HEK A20 F127C	DMSO	A	B	6802	33.43	37.18	214.24	
HEK A20 F127C	MG132 invivo	Ungated	A	20376	51.06	365.17	383.16	
HEK A20 F127C	MG132 invivo	A	B	5295	25.99	32.20	168.24	
HEK A20 L275P	DMSO	Ungated	A	20384	62.52	375.16	389.52	
HEK A20 L275P	DMSO	A	B	4825	23.67	31.34	124.67	
HEK A20 L275P	MG132 invivo	Ungated	A	20396	52.09	365.17	385.22	
HEK A20 L275P	MG132 invivo	A	B	5311	26.04	46.14	185.34	
HEK A20 L277	DMSO	Ungated	A	20372	70.75	352.27	379.45	
HEK A20 L277	DMSO	A	B	5074	24.91	32.20	60.49	
HEK A20 L277	MG132 invivo	Ungated	A	20296	60.63	395.96	422.78	
HEK A20 L277	MG132 invivo	A	B	5758	28.37	45.73	106.36	

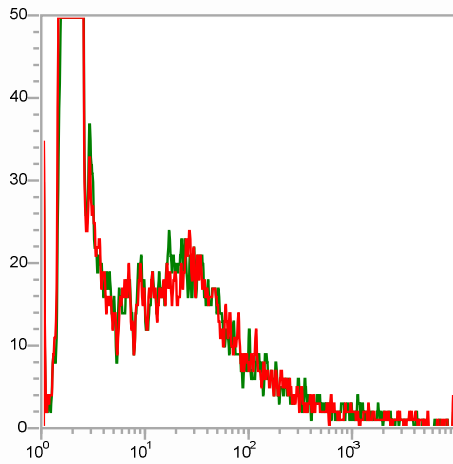
Overlay 1



- HEK EGFP DMSO
- HEK EGFP MG132 invivo

FL1-H

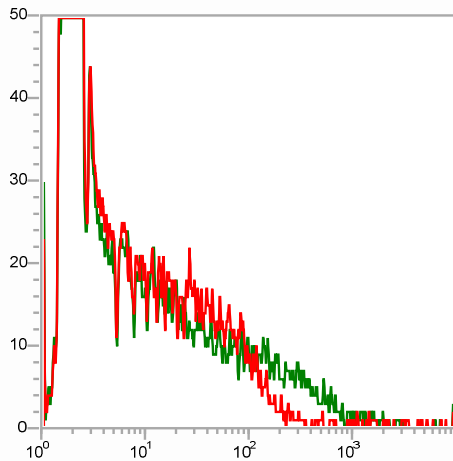
Overlay 2



- HEK A20 wt DMSO
- HEK A20 wt MG132 invivo

FL1-H

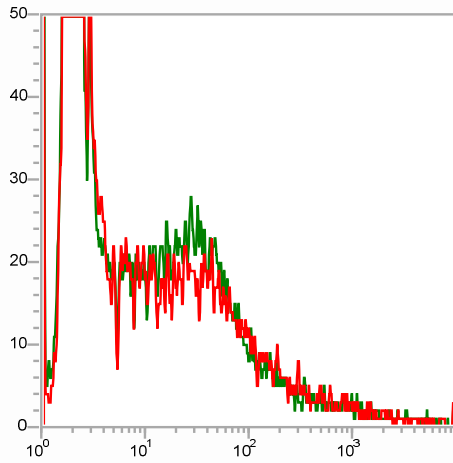
Overlay 3



- HEK A20 L236P DMSO
- HEK A20 L236P MG132 invivo

FL1-H

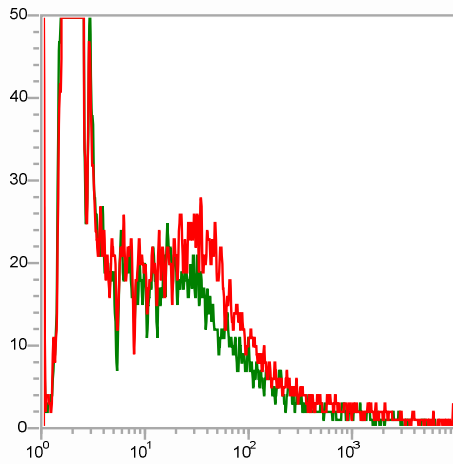
Overlay 4



HEK A20 N102S DMSO
HEK A20 N102S MG132 invivo

FL1-H

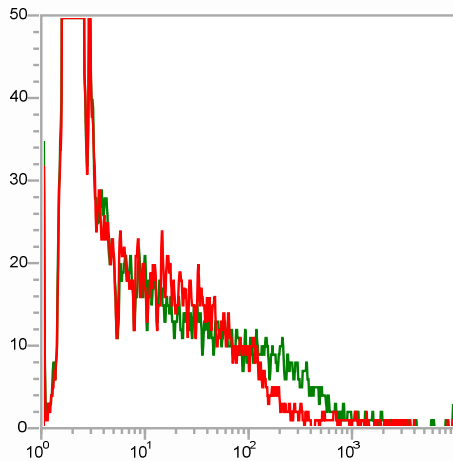
Overlay 5



HEK A20 F127C DMSO
HEK A20 F127C MG132 invivo

FL1-H

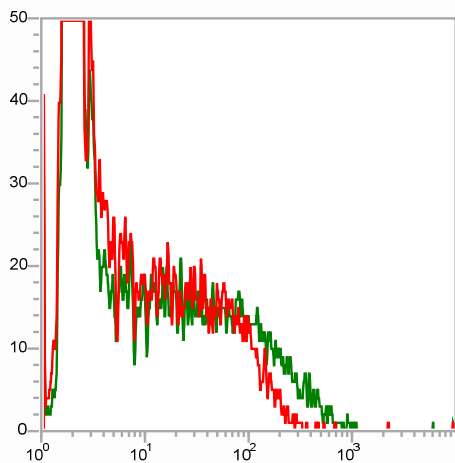
Overlay 6



HEK A20 L275P DMSO
HEK A20 L275P MG132 invivo

FL1-H

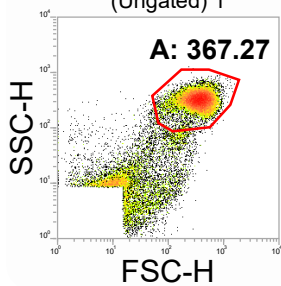
Overlay 7



- █ HEK A20 L277 DMSO
- █ HEK A20 L277 MG132 invivo

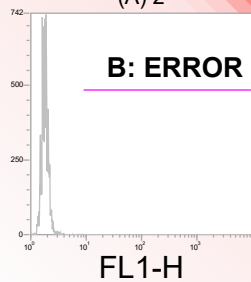
FL1-H

HEK NT no trt
(Ungated) 1

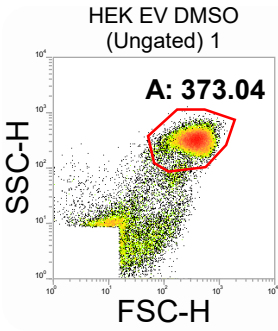


FCS Key 1	FCS Key 2	Gate	Region	Count	%Gated	X Median	X Mean	Error Message
HEK NT	no trt	Ungated A		20405	67.03	352.27	367.27	

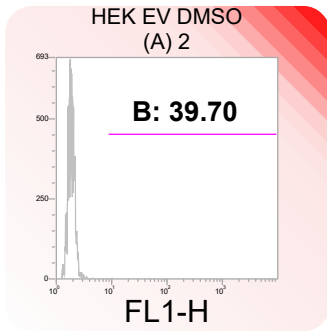
HEK NT no trt
(A) 2



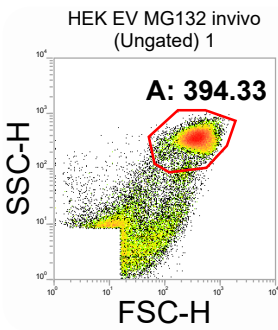
FCS Key 1	FCS Key 2	Gate	Region	Count	%Gated	X Median	X Mean	Error Message
HEK NT	no trt	A B		0	0.00	ERROR	ERROR	



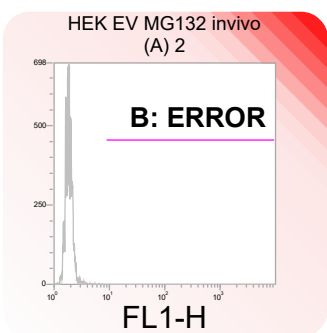
FCS Key 1	FCS Key 2	Gate	Region	Count	%Gated	X Median	X Mean	Error Message
HEK EV	DMSO	Ungated A		20345	67.10	358.66	373.04	



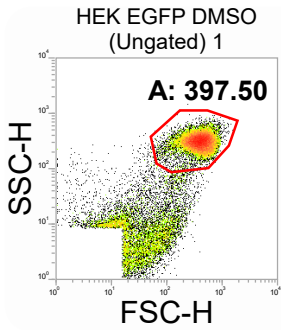
FCS Key 1	FCS Key 2	Gate	Region	Count	%Gated	X Median	X Mean	Error Message
HEK EV	DMSO	A B		3	0.01	47.83	39.70	



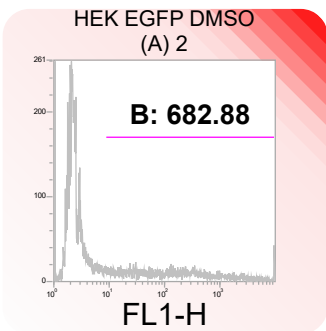
FCS Key 1	FCS Key 2	Gate	Region	Count	%Gated	X Median	X Mean	Error Message
HEK EV	MG132 invivo	Ungated A		20231	56.98	375.16	394.33	



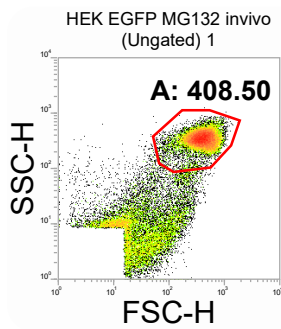
FCS Key 1	FCS Key 2	Gate	Region	Count	%Gated	X Median	X Mean	Error Message
HEK EV	MG132 invivo	A B		0	0.00	ERROR	ERROR	



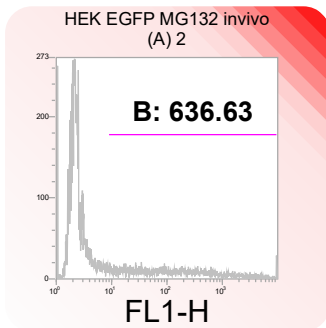
FCS Key 1	FCS Key 2	Gate	Region	Count	%Gated	X Median	X Mean	Error Message
HEK EGFP DMSO		Ungated A		20236	66.69	381.97	397.50	



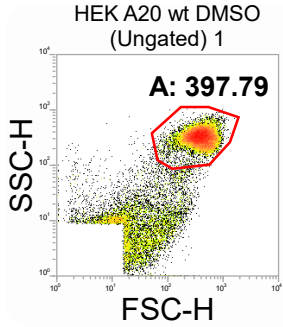
FCS Key 1	FCS Key 2	Gate	Region	Count	%Gated	X Median	X Mean	Error Message
HEK EGFP DMSO		A B		6087	30.08	127.49	682.88	



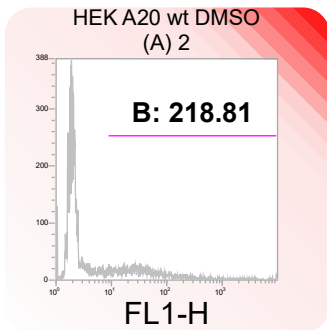
FCS Key 1	FCS Key 2	Gate	Region	Count	%Gated	X Median	X Mean	Error Message
HEK EGFP MG132 invivo		Ungated A		20264	57.86	388.91	408.50	



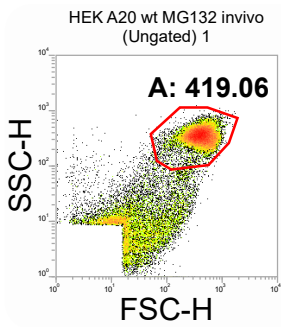
FCS Key 1	FCS Key 2	Gate	Region	Count	%Gated	X Median	X Mean	Error Message
HEK EGFP MG132 invivo		A B		5651	27.89	106.50	636.63	



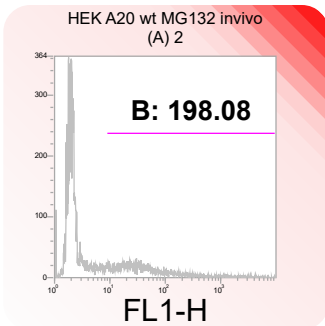
FCS Key 1	FCS Key 2	Gate	Region	Count	%Gated	X Median	X Mean	Error Message
HEK A20 wt DMSO		Ungated A		20162	68.33	378.55	397.79	



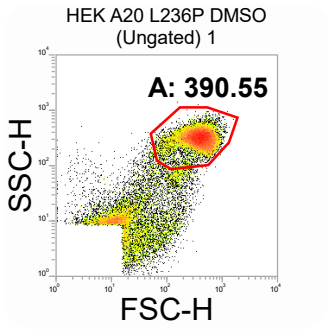
FCS Key 1	FCS Key 2	Gate	Region	Count	%Gated	X Median	X Mean	Error Message
HEK A20 wt DMSO		A B		5568	27.62	35.55	218.81	



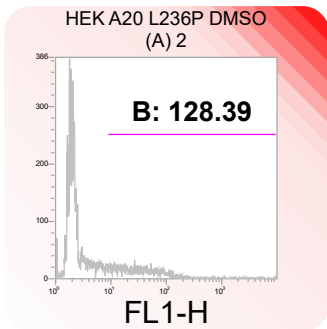
FCS Key 1	FCS Key 2	Gate	Region	Count	%Gated	X Median	X Mean	Error Message
HEK A20 wt MG132 invivo		Ungated A		20192	59.55	399.54	419.06	



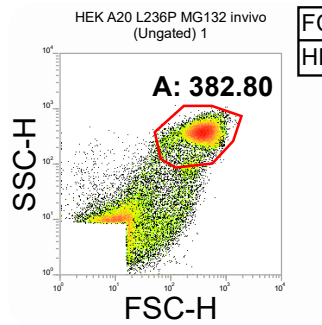
FCS Key 1	FCS Key 2	Gate	Region	Count	%Gated	X Median	X Mean	Error Message
HEK A20 wt MG132 invivo		A B		5651	27.99	34.29	198.08	



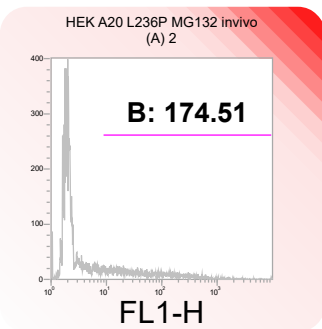
FCS Key 1	FCS Key 2	Gate	Region	Count	%Gated	X Median	X Mean	Error Message
HEK A20 L236P	DMSO	Ungated	A	20496	61.34	378.55	390.55	



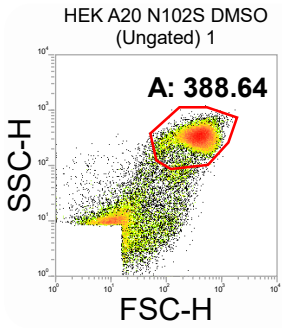
FCS Key 1	FCS Key 2	Gate	Region	Count	%Gated	X Median	X Mean	Error Message
HEK A20 L236P	DMSO	A	B	4784	23.34	30.23	128.39	



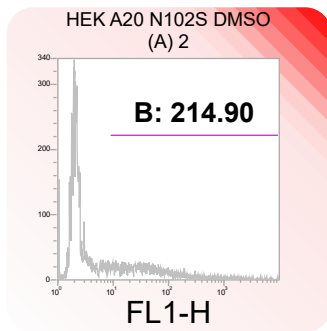
FCS Key 1	FCS Key 2	Gate	Region	Count	%Gated	X Median	X Mean	Error Message
HEK A20 L236P	MG132 invivo	Ungated	A	20449	53.46	365.17	382.80	



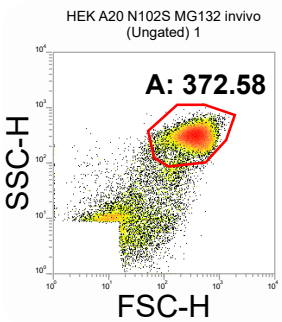
FCS Key 1	FCS Key 2	Gate	Region	Count	%Gated	X Median	X Mean	Error Message
HEK A20 L236P	MG132 invivo	A	B	5083	24.86	41.05	174.51	



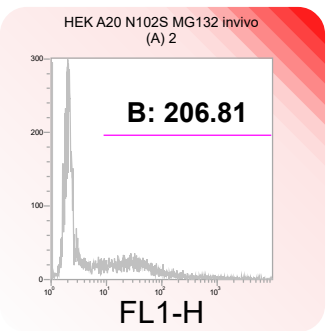
FCS Key 1	FCS Key 2	Gate	Region	Count	%Gated	X Median	X Mean	Error Message
HEK A20 N102S	DMSO	Ungated	A	20564	59.21	375.16	388.64	



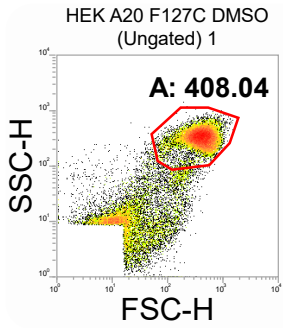
FCS Key 1	FCS Key 2	Gate	Region	Count	%Gated	X Median	X Mean	Error Message
HEK A20 N102S	DMSO	A	B	6169	30.00	40.32	214.90	



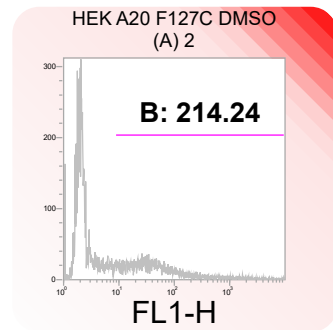
FCS Key 1	FCS Key 2	Gate	Region	Count	%Gated	X Median	X Mean	Error Message
HEK A20 N102S	MG132 invivo	Ungated	A	20386	70.16	355.45	372.58	



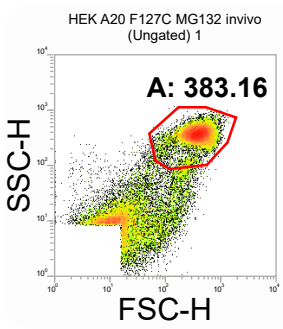
FCS Key 1	FCS Key 2	Gate	Region	Count	%Gated	X Median	X Mean	Error Message
HEK A20 N102S	MG132 invivo	A	B	6753	33.13	36.19	206.81	



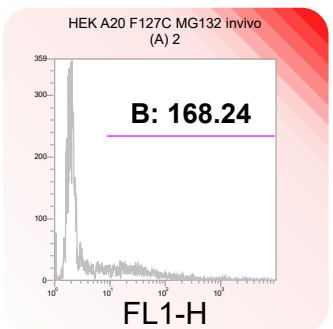
FCS Key 1	FCS Key 2	Gate	Region	Count	%Gated	X Median	X Mean	Error Message
HEK A20 F127C DMSO		Ungated A		20349	62.53	392.42	408.04	



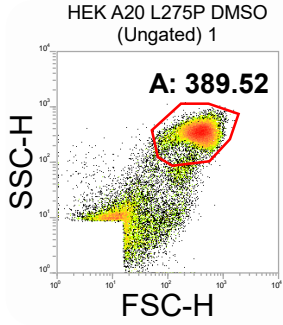
FCS Key 1	FCS Key 2	Gate	Region	Count	%Gated	X Median	X Mean	Error Message
HEK A20 F127C DMSO		A B		6802	33.43	37.18	214.24	



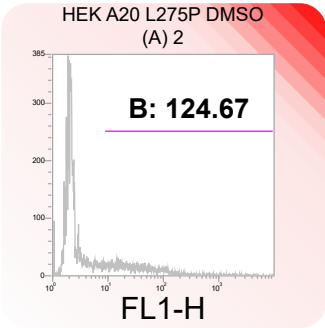
FCS Key 1	FCS Key 2	Gate	Region	Count	%Gated	X Median	X Mean	Error Message
HEK A20 F127C MG132 invivo		Ungated A		20376	51.06	365.17	383.16	



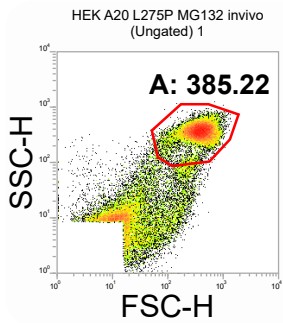
FCS Key 1	FCS Key 2	Gate	Region	Count	%Gated	X Median	X Mean	Error Message
HEK A20 F127C MG132 invivo		A B		5295	25.99	32.20	168.24	



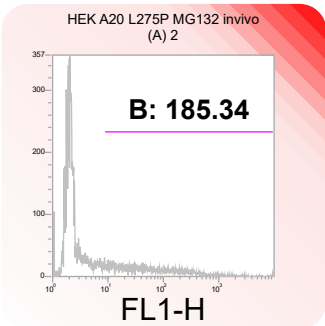
FCS Key 1	FCS Key 2	Gate	Region	Count	%Gated	X Median	X Mean	Error Message
HEK A20 L275P	DMSO	Ungated	A	20384	62.52	375.16	389.52	



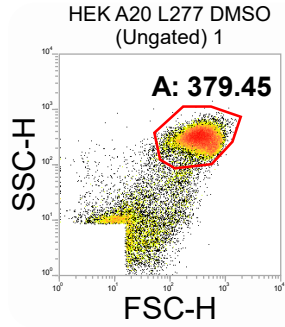
FCS Key 1	FCS Key 2	Gate	Region	Count	%Gated	X Median	X Mean	Error Message
HEK A20 L275P	DMSO	A	B	4825	23.67	31.34	124.67	



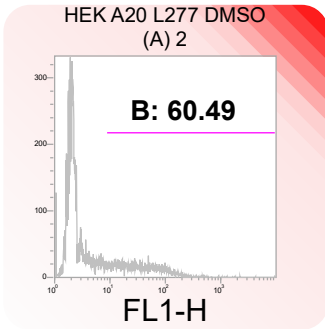
FCS Key 1	FCS Key 2	Gate	Region	Count	%Gated	X Median	X Mean	Error Message
HEK A20 L275P	MG132 invivo	Ungated	A	20396	52.09	365.17	385.22	



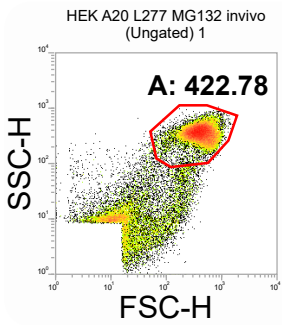
FCS Key 1	FCS Key 2	Gate	Region	Count	%Gated	X Median	X Mean	Error Message
HEK A20 L275P	MG132 invivo	A	B	5311	26.04	46.14	185.34	



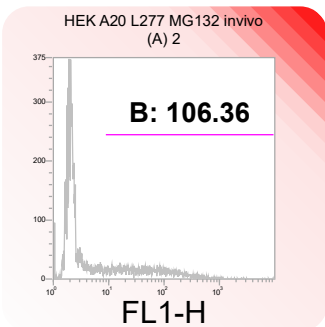
FCS Key 1	FCS Key 2	Gate	Region	Count	%Gated	X Median	X Mean	Error Message
HEK A20 L277	DMSO	Ungated	A	20372	70.75	352.27	379.45	



FCS Key 1	FCS Key 2	Gate	Region	Count	%Gated	X Median	X Mean	Error Message
HEK A20 L277	DMSO	A	B	5074	24.91	32.20	60.49	



FCS Key 1	FCS Key 2	Gate	Region	Count	%Gated	X Median	X Mean	Error Message
HEK A20 L277	MG132 invivo	Ungated	A	20296	60.63	395.96	422.78	



FCS Key 1	FCS Key 2	Gate	Region	Count	%Gated	X Median	X Mean	Error Message
HEK A20 L277	MG132 invivo	A	B	5758	28.37	45.73	106.36	