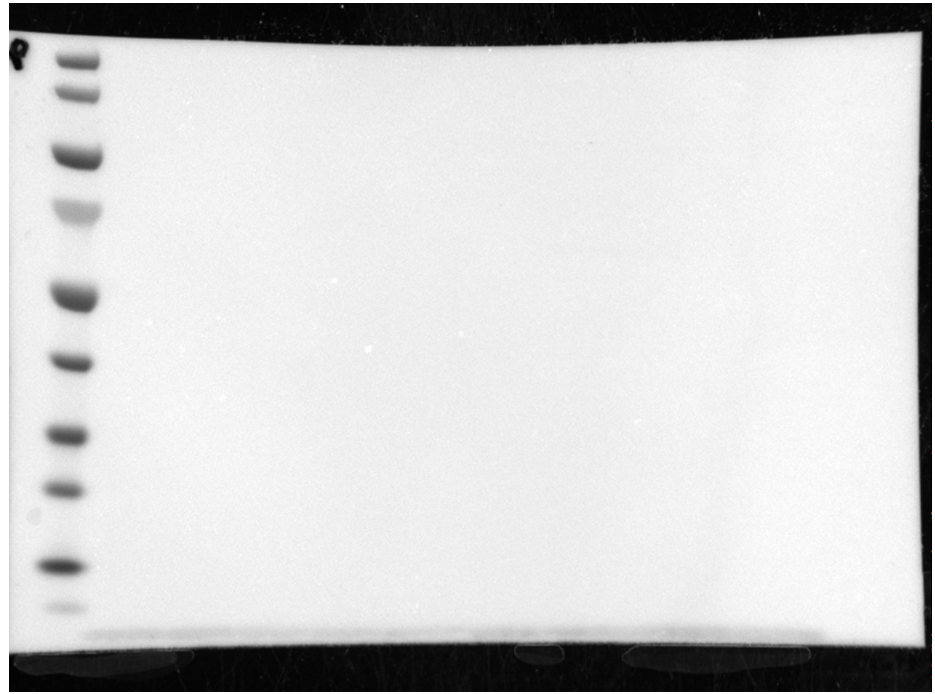


white light:



chemiluminescence:

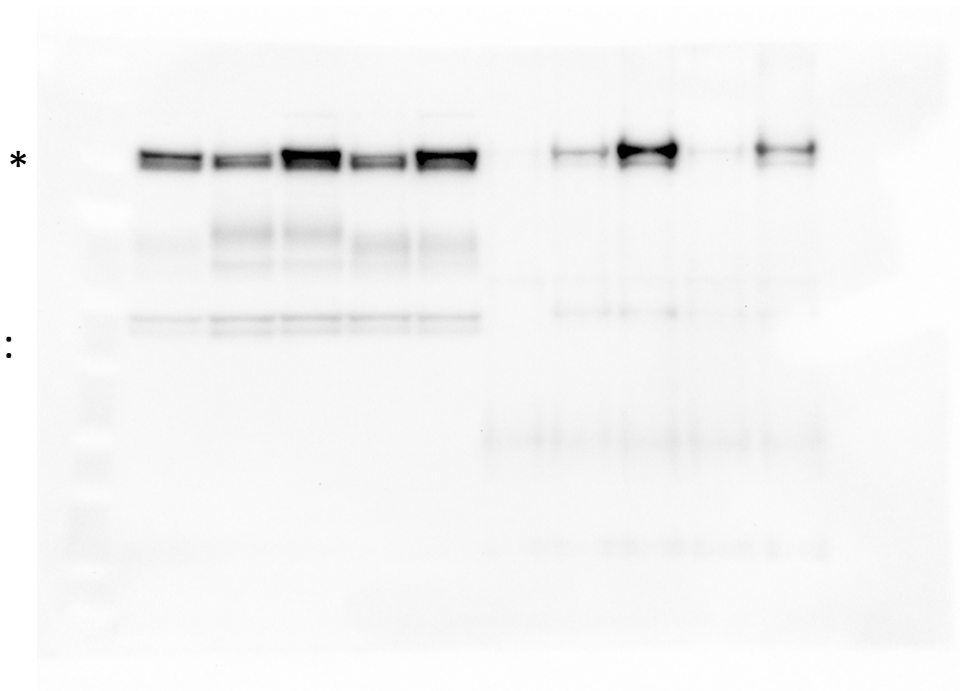


Figure 7 Source Data 1. Mouse Dux co-IP, anti-STAT1. Western blot showing anti-STAT1 signal for Figure 7b. * marks correct size bands. Blot was probed intact for STAT1. Protein ladder only appears in the “white light” exposure, signal from ECL only appears in the chemiluminescence channel. The double-bands marked by the * represent the alpha (upper) and beta (lower) isoforms of endogenous STAT1.