

white light:



chemiluminescence:

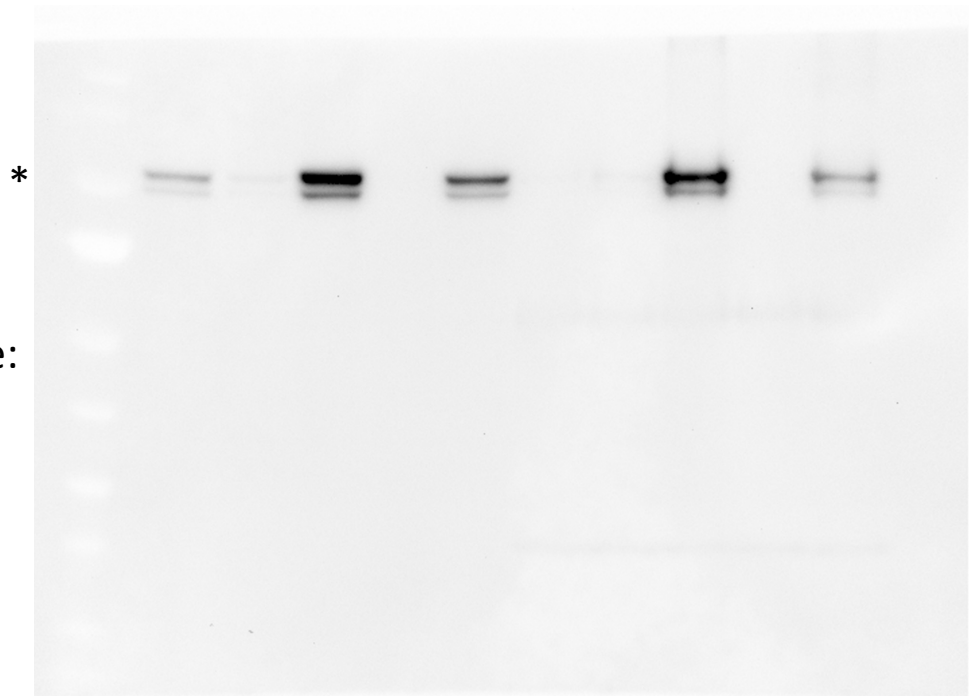


Figure 7 Source Data 2. Mouse Dux co-IP, anti-pSTAT1(Y701). Western blot showing anti-pSTAT1(Y701) signal for Figure 7b. * marks correct size bands. Blot was stripped from previous exposure and re-probed with anti-pSTAT1(Y701). Protein ladder only appears in the “white light” exposure, signal from ECL only appears in the chemiluminescence channel. The double-bands marked by the * represent the alpha (upper) and beta (lower) isoforms of endogenous STAT1.