

Figure 6—Figure Supplement 1

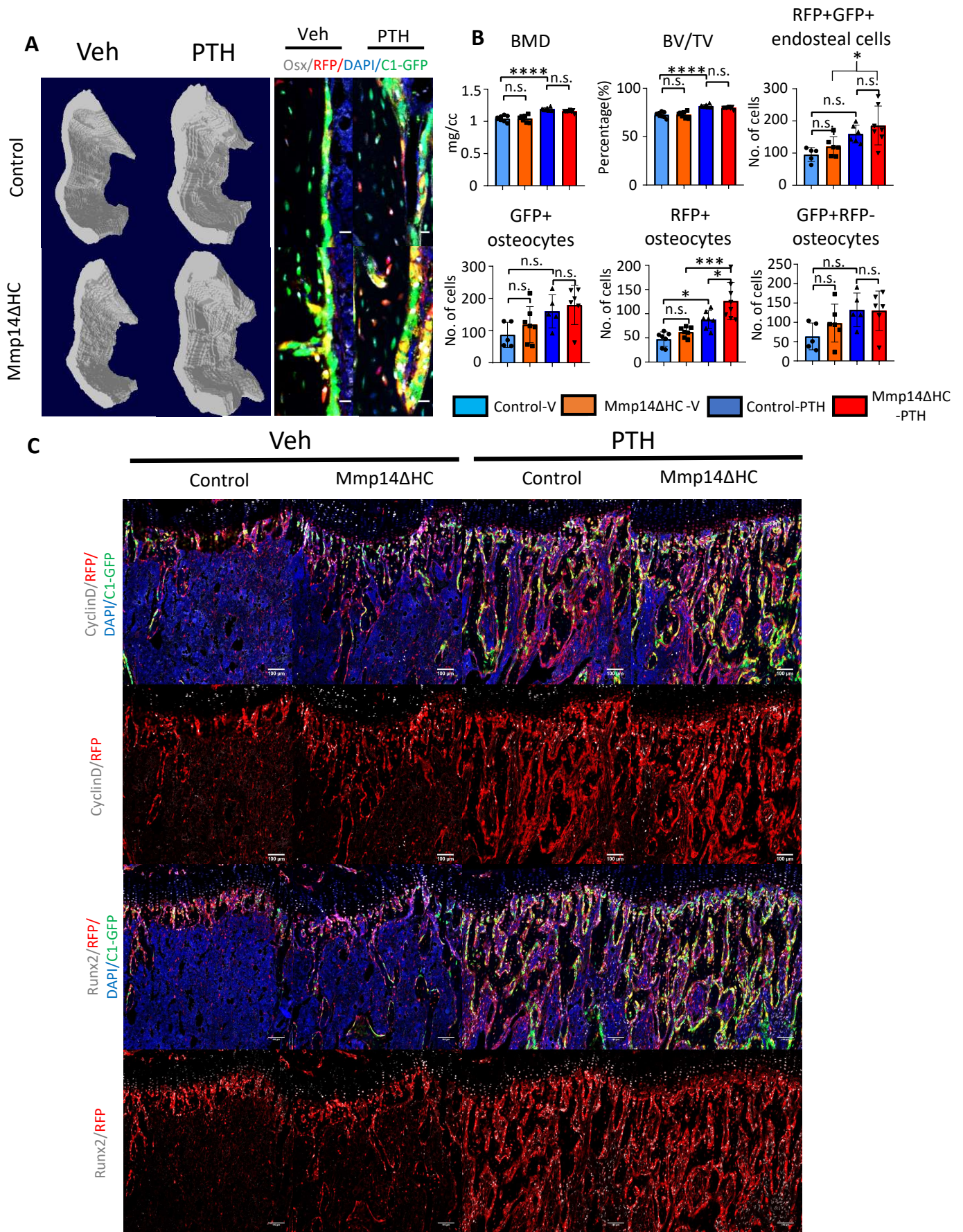


Figure 6—figure supplement 1. Differential response to PTH in cortical osteocytes compared to trabecular osteoblast. (A), Transverse images of cortical bone via MicroCT reconstruction in Control and Mmp14ΔHC mice treated with vehicle and PTH(1-34). Representative immunofluorescence images of OSTERIX, RFP, GFP and DAPI in cortical region are presented. **(B),** Quantitation of BMD, BV/TV in the cortical region as indicated in a. Quantitation of RFP+GFP+, RFP+, RFP-GFP+ osteocytes and endosteal RFP+ cells. * $p < 0.05$, ** $p < 0.01$, *** $p < 0.001$ by Oneway ANOVA followed by Turkey's post hoc test was used to determine statistical significance. **(C),** Representative immunofluorescence images of CyclinD, Runx2, RFP, GFP and DAPI in trabecular region are presented.