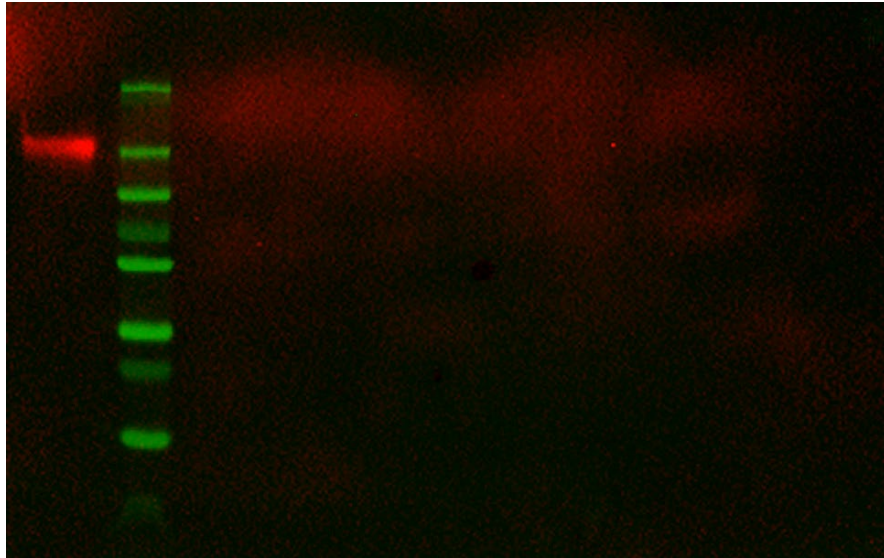
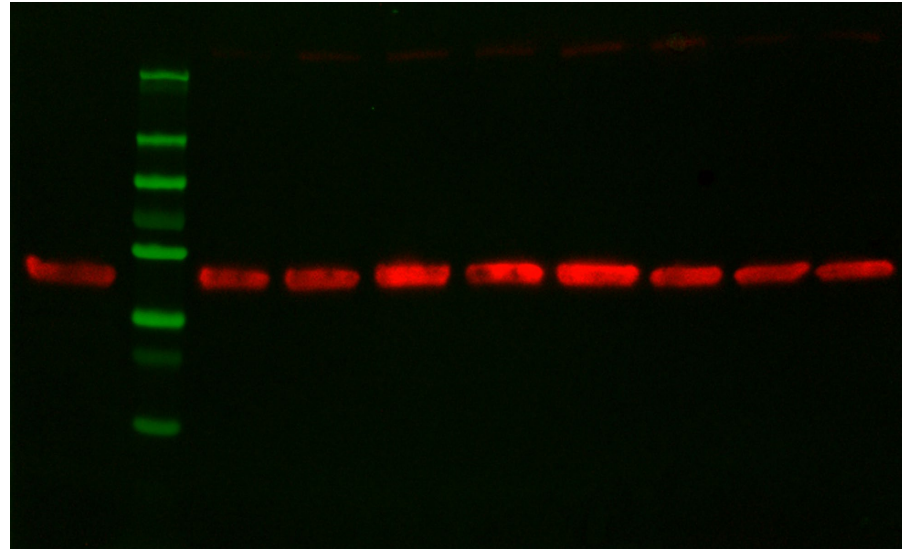


Full unedited gels for Fig 3 – figure supplement 1D

CD31



β -actin



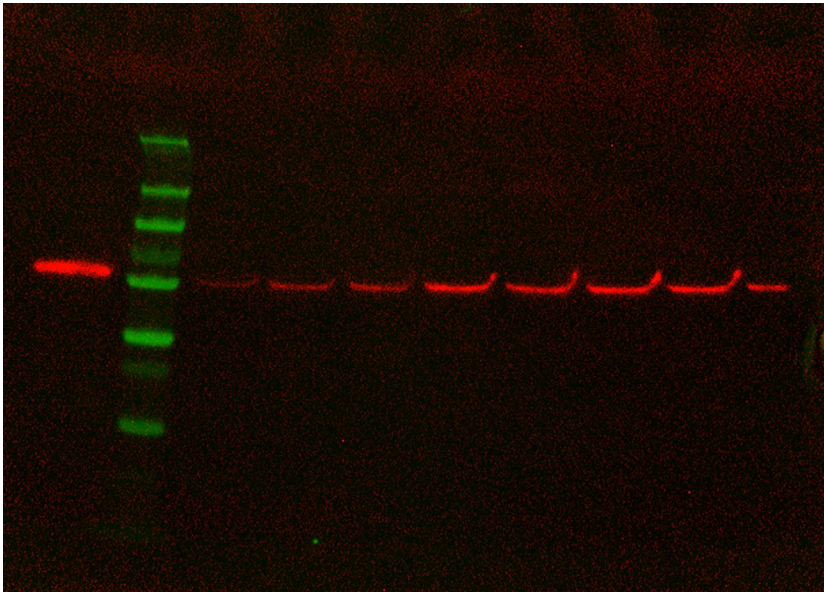
2nd sample from right
excluded due to
pathological diagnosis
--> Atypical VM; some
features of Maffucci
syndrome

These lanes were
included in the Figure

These lanes were
included in the Figure

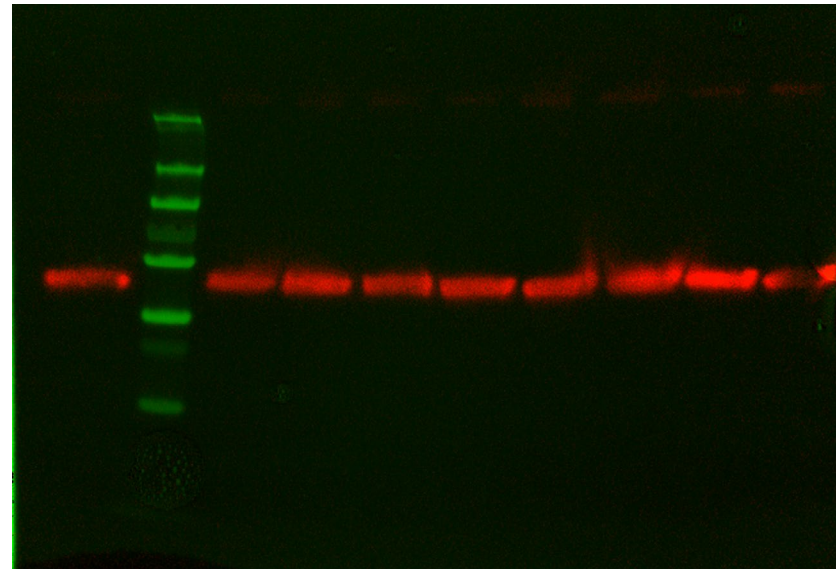
Full unedited gels for Fig 3 – figure supplement 1E

Vimentin



These lanes were
included in the Figure

β -actin

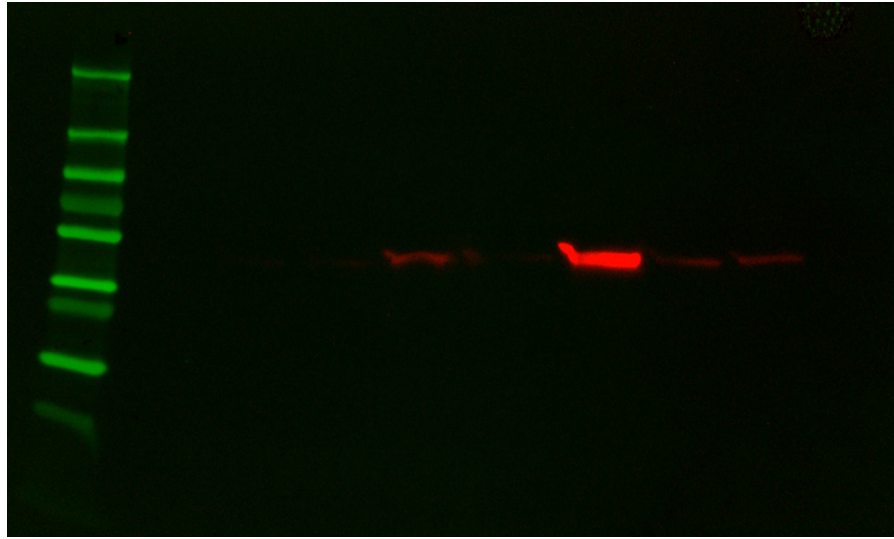


These lanes were
included in the Figure

2nd sample from right
excluded due to
pathological diagnosis
--> Atypical VM; some
features of Maffucci
syndrome

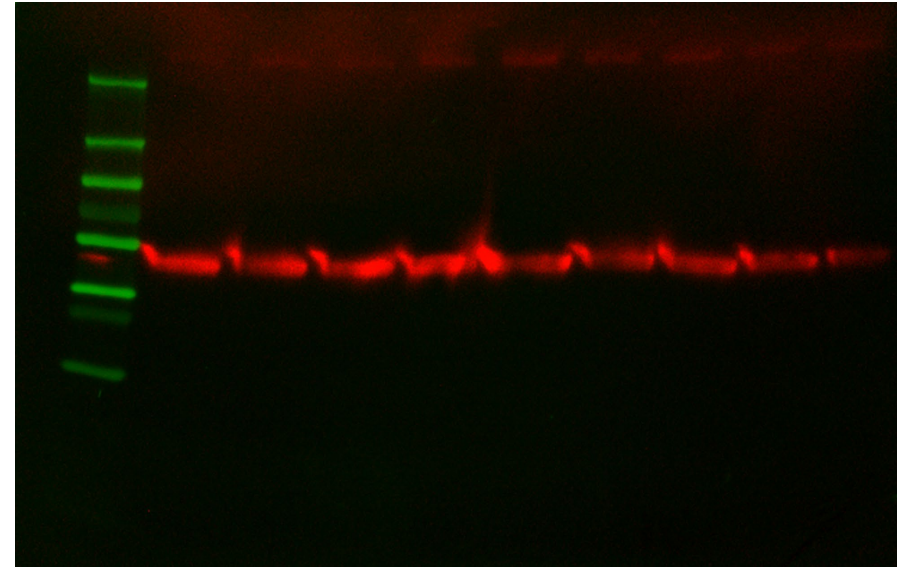
Full unedited gels for Fig 3 – figure supplement 1F

α SMA



These lanes were
included in the Figure

β -actin



These lanes were
included in the Figure

2nd sample from right
excluded due to
pathological diagnosis
--> Atypical VM; some
features of Maffucci
syndrome