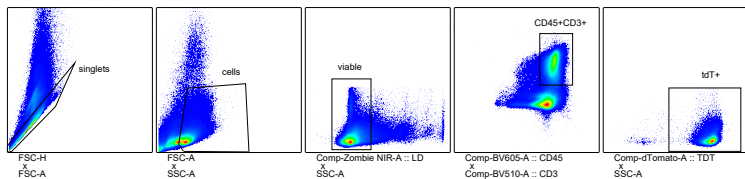


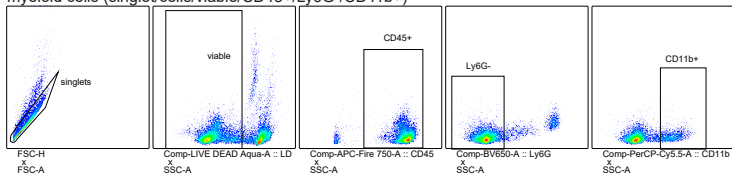
B2m^{tdT} spleen baseline

T cells (singlet/cells/viable/CD45+CD3+)

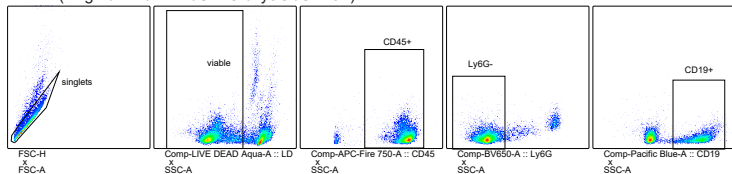


Cd74^{tdT} spleen baseline

myeloid cells (singlet/cells/viable/CD45+/Ly6G-/CD11b+)



B cells (singlet/cells/viable/CD45+/Ly6G-/CD19+)



dendritic cells (singlet/cells/viable/CD45+/Ly6G-/CD11b-/CD11c+)

