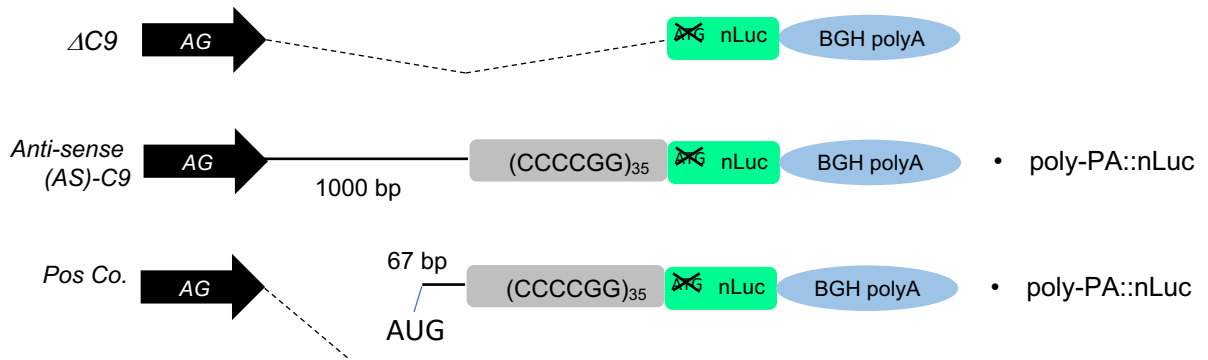
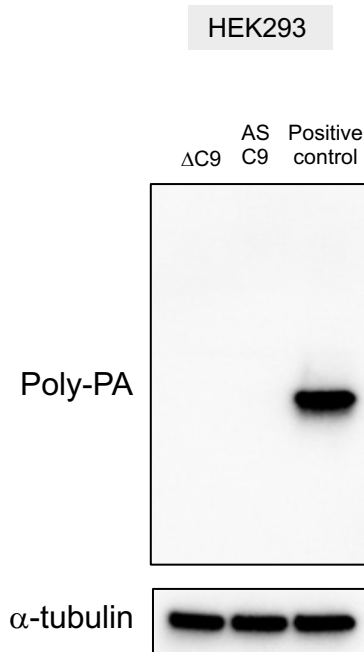


A



B



C

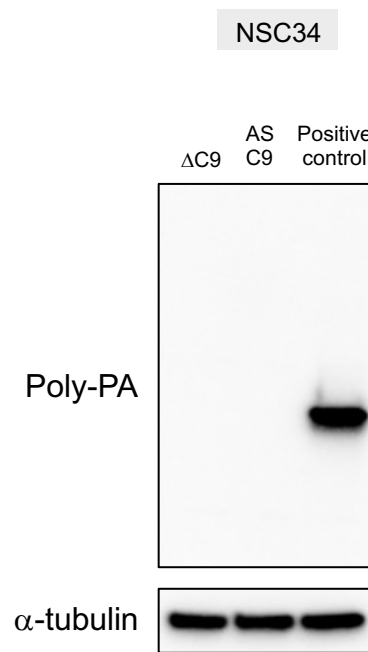


Figure 1 - figure supplement 3. Poly-PA is not detected by Western blotting upon transfection of anti-sense C9 plasmids containing CCCCCGG repeats.

(A) Schematic diagram of the constructs. (B-C) (B) HEK293 and (C) NSC34 cells were transfected with either ΔC9, AS-C9, or positive control plasmids. For positive control, we generated a plasmid that has an AUG start codon located at -67bp upstream from CCCCCGG repeats. This AUG is in poly-PA frame. Cell lysates were processed for Western blotting, and immunostained with antibodies to poly-PA and α-tubulin.