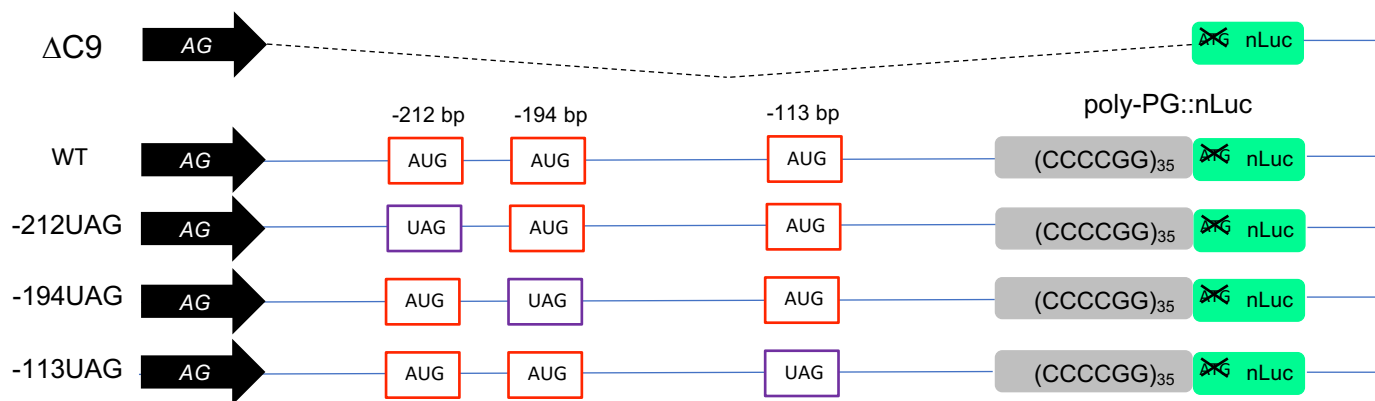
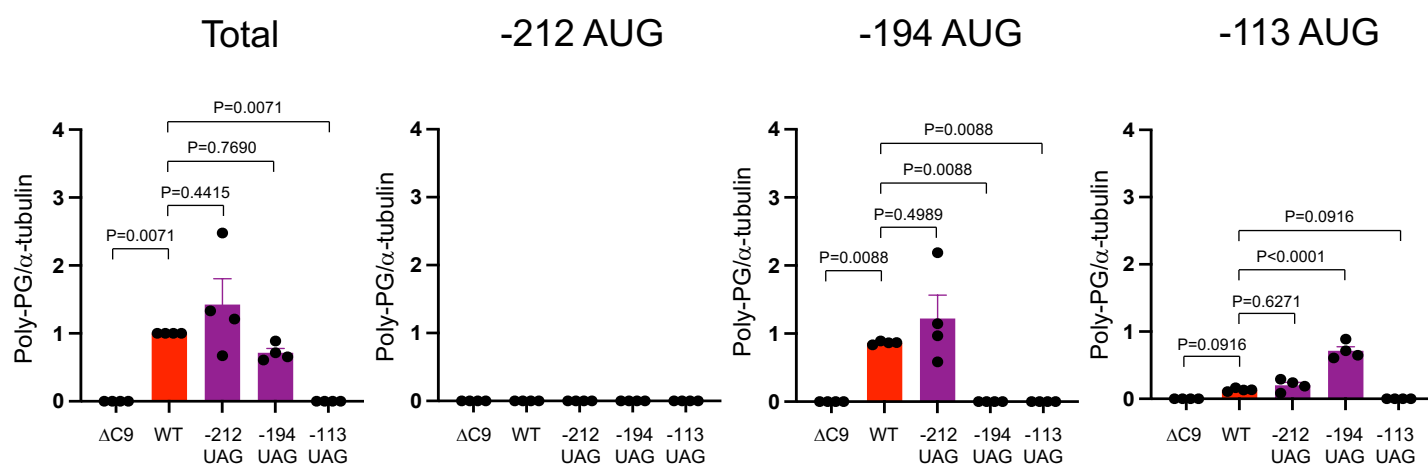


A



B

HEK293 cells



C

NSC34 cells

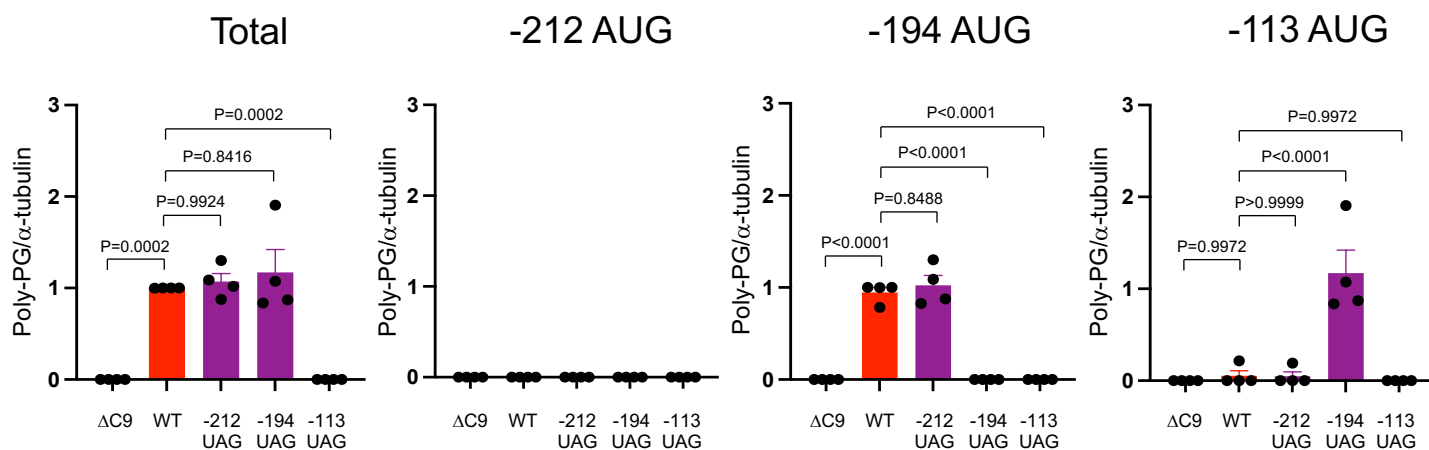


Figure 5 – figure supplement 1. Quantification of data from Figures 5B and C.

(A) Schematic diagram of the constructs. (B-C) The signal intensity of total poly-PG and poly-PG translated from each of the AUGs (-212, -194, or -113) in (B) HEK293 and (C) NSC34 cells was quantified. One-way ANOVA with Tukey's multiple comparison test was performed. The experiments were repeated 4 times. Data are presented as mean \pm s.e.m.