



7-7-11 5th ABE Exposure: ECL 5!  
 Aycl-Biotin Exchange in vivo from  
 adult mouse forebrain, E14.5 mouse ~~cortex~~  
 and E14.5 heart and big vessels.



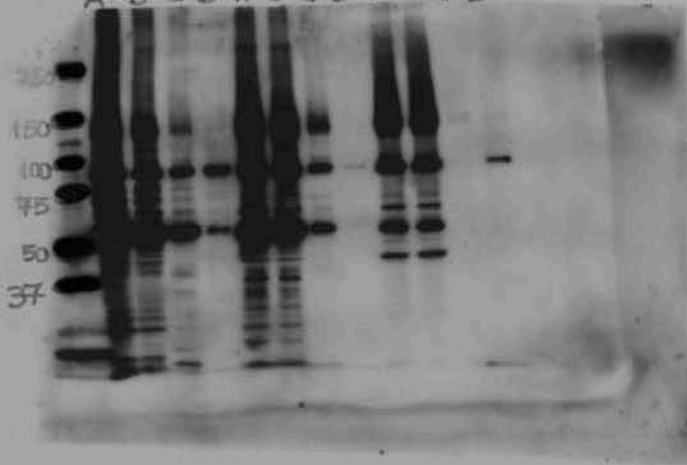
**ABE on mouse tissue**

**PSD-95 immunoblot**

PSD-95 IB:  $\alpha$ -PSD-95 Ab, mouse, Millipore.  
 blocking: 5% milk, 1hr at RT  
 1° Ab: 1:2000 in 5% milk/TBS-T dN, 4°C  
 2° Ab: 1:10,000 in 1% milk, 1hr, RT

A: Input +HA    B: Input -HA  
 C: +HA        D: -HA

adult mouse forebrain    E14.5 mouse cortex    E14.5 heart and big vessels  
 A B C D    A B C D    A B C D



**Nrp-1 immunoblot**

Nrp1 IB:  $\alpha$ -Nrp1 Ab, goat (R & D)  
 blocking: 3% BSA in TBS-T for 1hr at RT  
 1° Ab: 1:1000 in 3% BSA/TBS-T dN at 4°C  
 2° Ab:  $\alpha$ -goat HRP-conjugated 2° Ab  
 1:10,000 in 1% milk, 1hr at RT