

ABE on deep layer primary cortical neurons treated with Sema3F-AP, Sema3A-AP or AP with the indicated duration

EK/AK 3/21/14

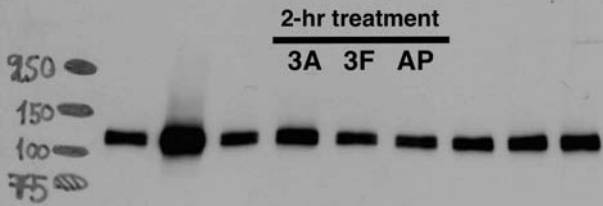
ECL Prime 2.0 sec.

36h ABE (II)

20 μ l/lane

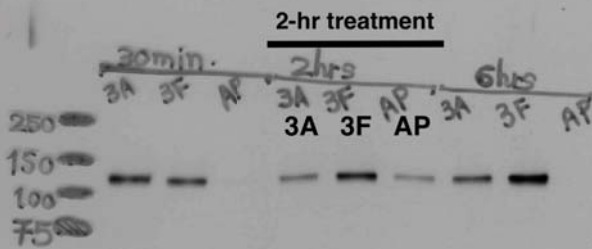
Neuropilin-2 IB

Nrp-2 immunoblots



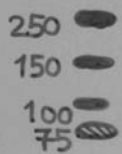
Inputs

Inputs



+HA samples

+HA-samples



-HA samples

-HA-samples

1°: Neuropilin-2 Ab, rabbit (Cell Signaling #33665) 1:1,000 o/N at 4°C in 5% milk
 2°: HRP-conj. α -rabbit Ab 1:10,000 in 1% milk for 1hr at RT

Note: No signal in -HA samples; confirms specificity of palmitoylation signal (+HA samples)