

Figure 5-figure supplement 3

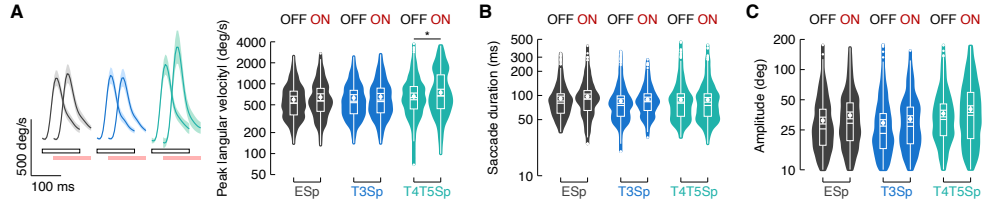


Figure 5-figure supplement 3. Saccade dynamics during bar tracking and optogenetic stimulation. **(A)** Left: average angular velocity (mean \pm s.e.m.) of saccades. Light gray and red horizontal bars at the bottom indicate LED OFF and ON, respectively. Right: violin-box plots of saccade peak angular velocity during periods of LED OFF and ON (y-axis is on a log scale). A generalized linear mixed model (with gamma distribution and log link function) was fitted to the mean values per fly and pairwise post-hoc comparisons using *t*-tests adjusted with Bonferroni method were used to compare the levels of the fixed effect (EmptySp OFF vs ON, $p = .64$, Cohen's $d = -.44$; T3Sp OFF vs ON, $p = 1$, Cohen's $d = -.21$; T4/T5Sp OFF vs ON, $p = .02$, Cohen's $d = -.69$). Graph features are as in **Figure 5E**. **(B)** Violin-box plots of saccade duration during periods of LED OFF and ON (EmptySp OFF vs ON, $p = .99$, Cohen's $d = -.43$; T3Sp OFF vs ON, $p = 1$, Cohen's $d = -.34$; T4/T5Sp OFF vs ON, $p = 1$, Cohen's $d = .02$). Null model was the best model tested. Graph features and statistical approach are as in **(A)**. **(C)** Violin-box plots of saccade amplitude during periods of LED OFF and ON (EmptySp OFF vs ON, $p = .16$, Cohen's $d = -.65$; T3Sp OFF vs ON, $p = .66$, Cohen's $d = -.49$; T4/T5Sp OFF vs ON, $p = .39$, Cohen's $d = -.56$). Graph features and statistical approach are as in **(A)**.