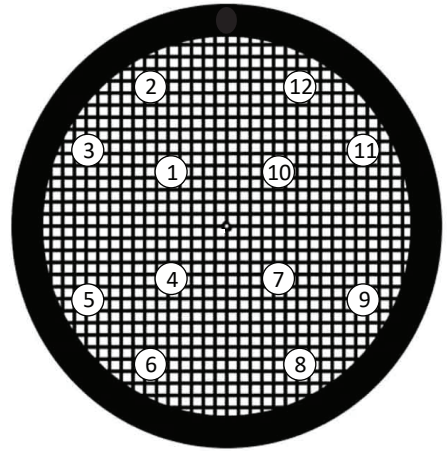


Fig 2- figure supplement 1

Semi-quantitative TEM methodology

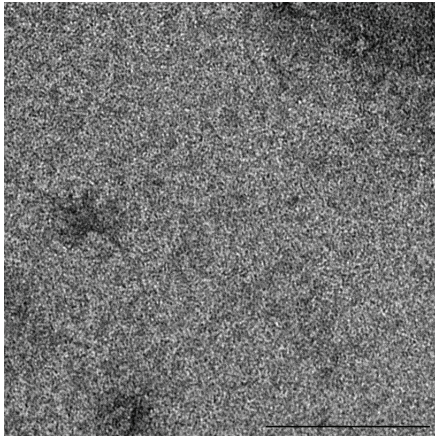
- define 12 positions spread on the entire TEM grid (A)
- acquire images for each position (without looking around for polymers )
- record the presence and density of pairs or protofilaments, and classify as : - no polymers
  - + rare scattered polymers
  - ++ medium to high density of polymers

A

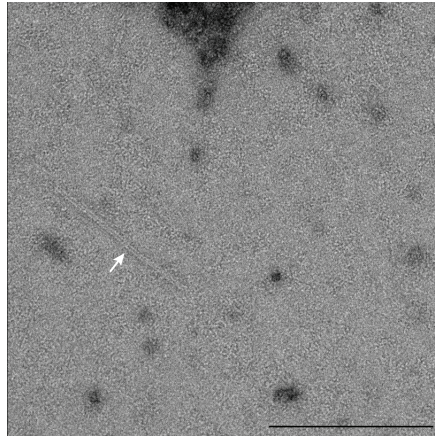


B

none  
(-)



low density  
(+)



medium density  
(++)

