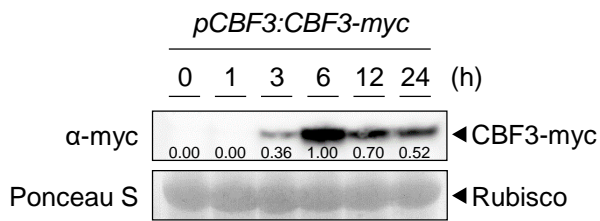
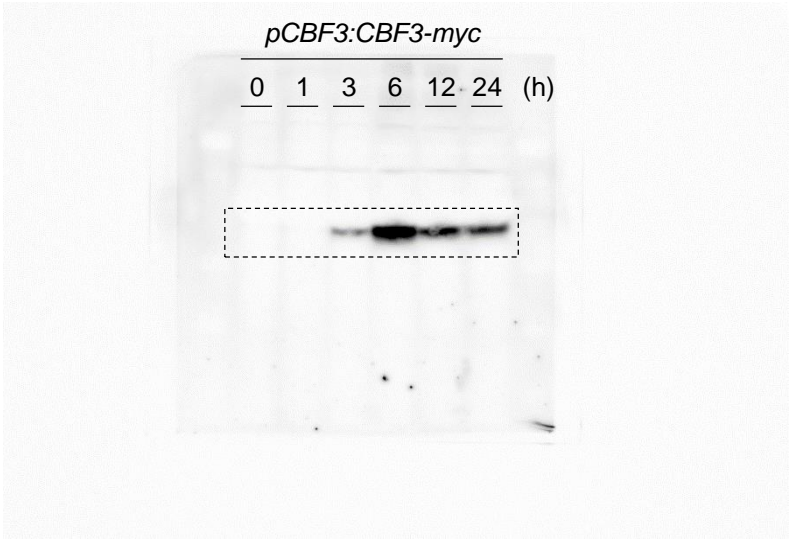


Figure 3—source data 1.
Uncropped labeled blot images and the original image files for the immunoblots.
Dotted outlines indicate the cropping.

Figure panel (Figure 3D)



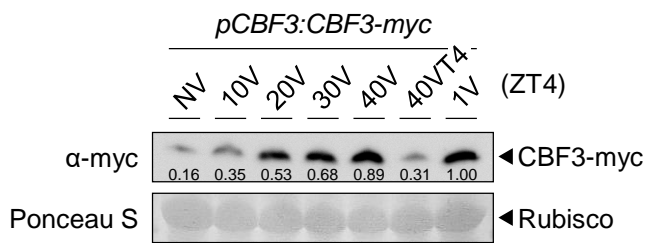
Source data 2
Anti-myc immunoblot (chemiluminescence)



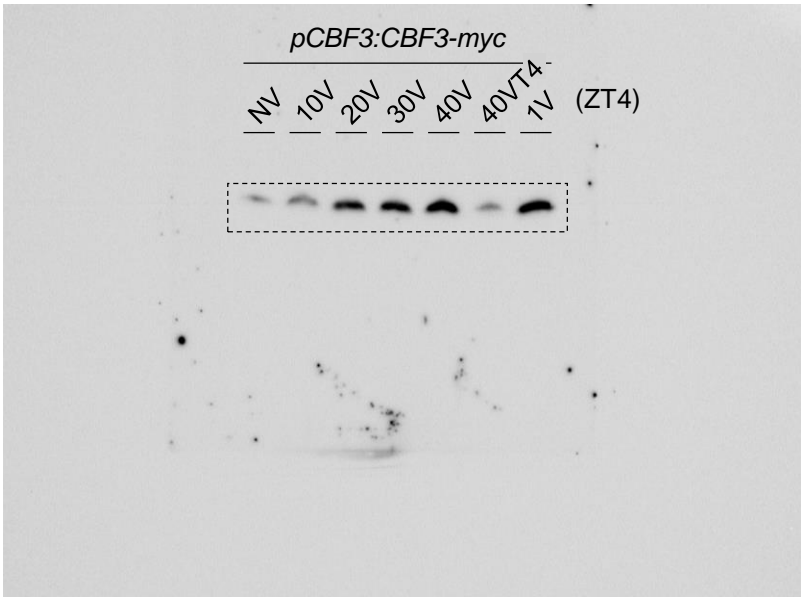
Source data 3
Ponceau S staining



Figure panel (Figure 3E)



Source data 2
Anti-myc immunoblot (chemiluminescence)



Source data 3
Ponceau S staining

