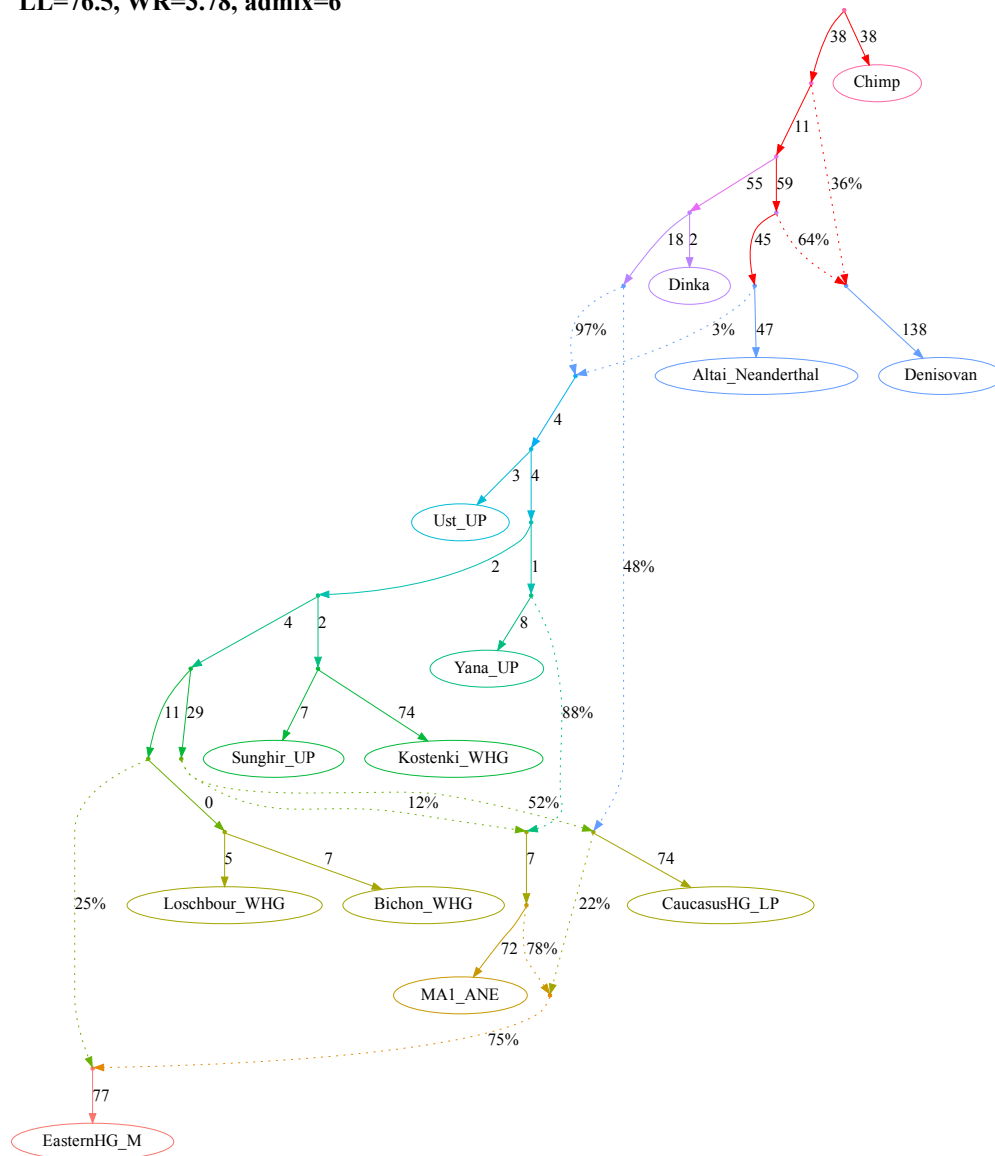


Figure S12

Figure S12. Simplified published admixture graph for West Eurasian groups from Sikora *et al.* (2019) and alternative graphs found with *findGraphs* (13 populations, 6 admixture events). Model parameters (graph edges) that were inferred to be unidentifiable are plotted in red.

a, published model, with chimpanzee added as an outgroup and 4 low-level gene flows from the Neanderthal lineage dropped

LL=76.5, WR=3.78, admix=6



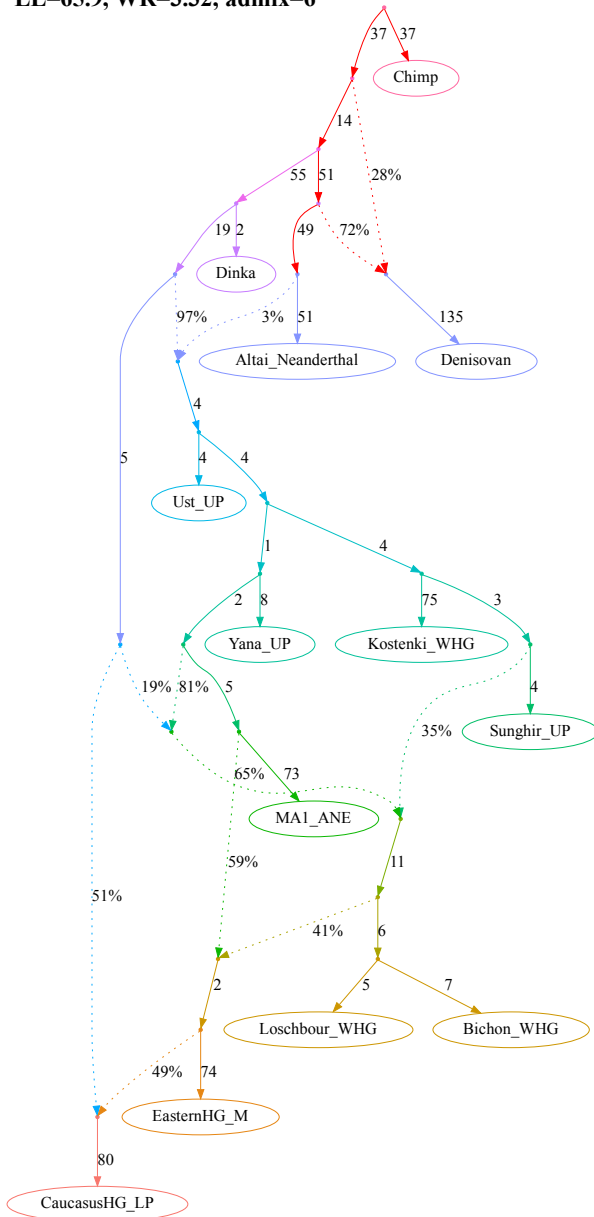
A claim by Sikora et al. 2019 relying on the admixture graph above:

The Mal'ta (MA1_ANE) lineage receives a gene flow from the Caucasus hunter-gatherer (CaucasusHG_LP) lineage.

Figure S12

b, models fitting nominally better than the published one and not supporting the claim

LL=65.9, WR=3.32, admix=6



LL=67.6, WR=3.51, admix=6

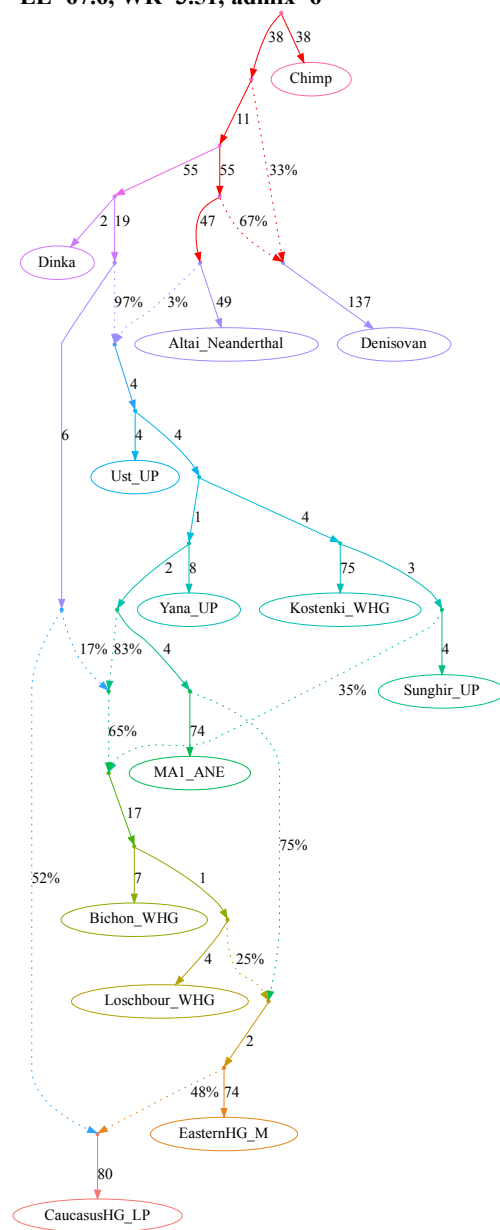


Figure S12

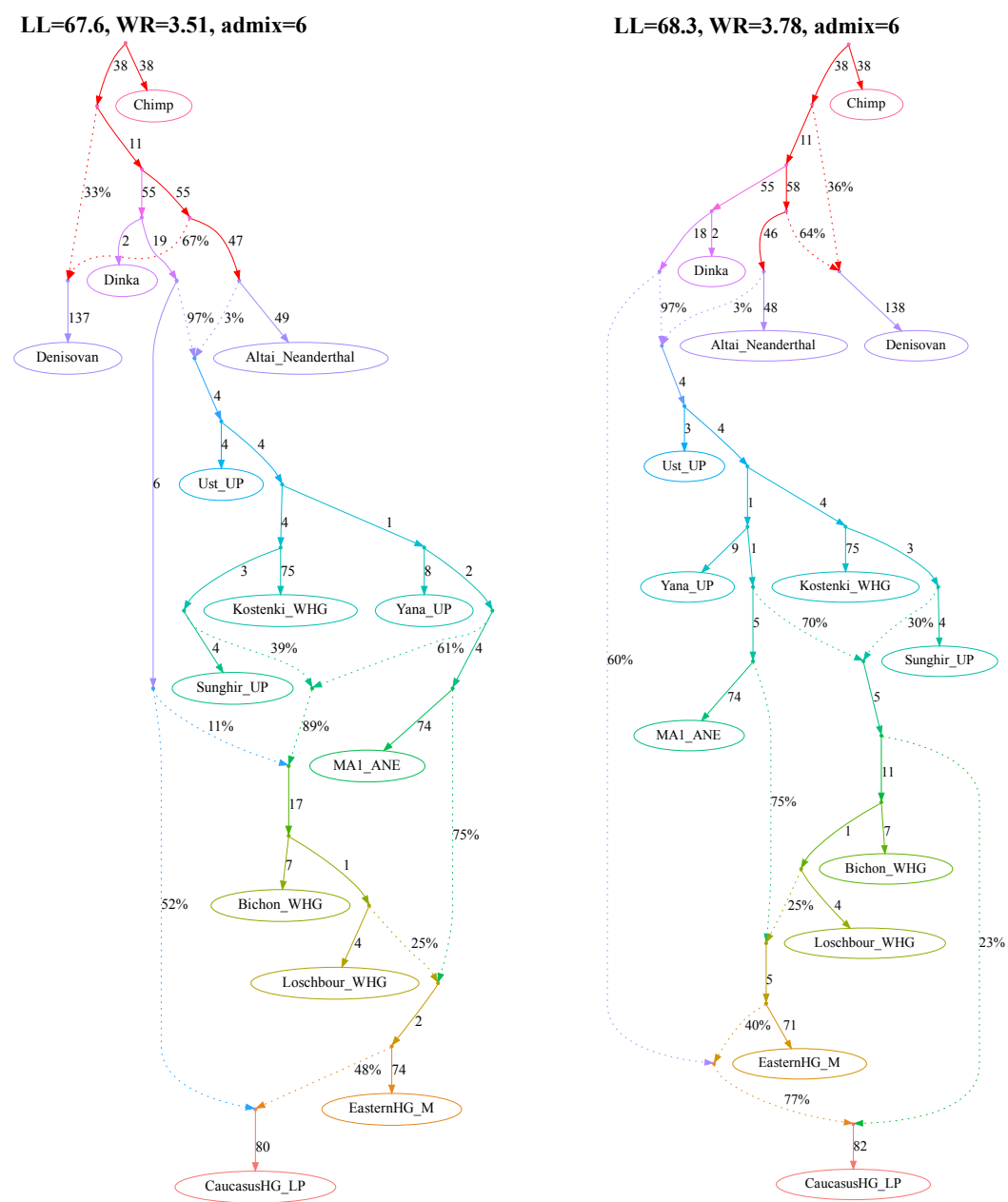
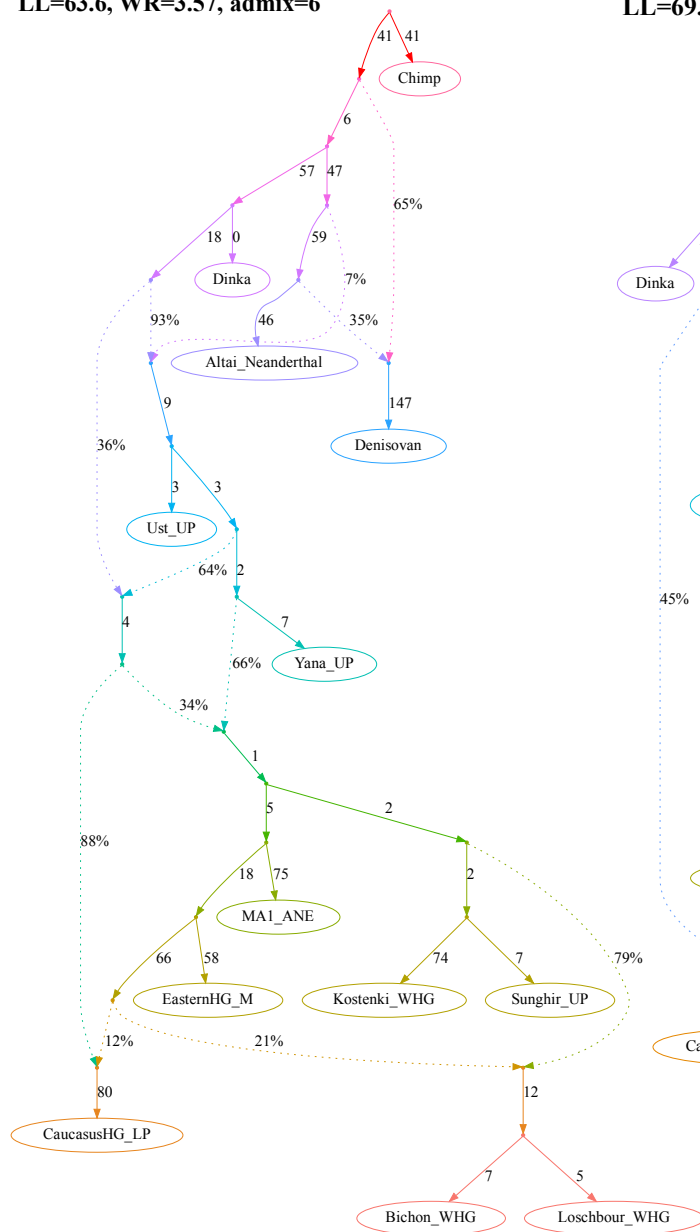


Figure S12

c, models fitting nominally better than the published one and not supporting the claim

LL=63.6, WR=3.57, admix=6



LL=69.1, WR=3.78, admix=6

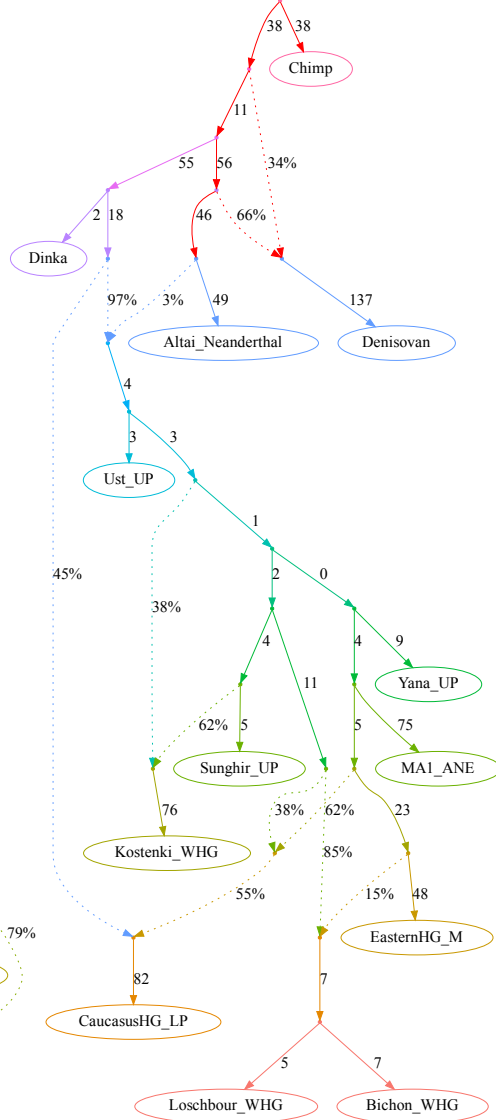
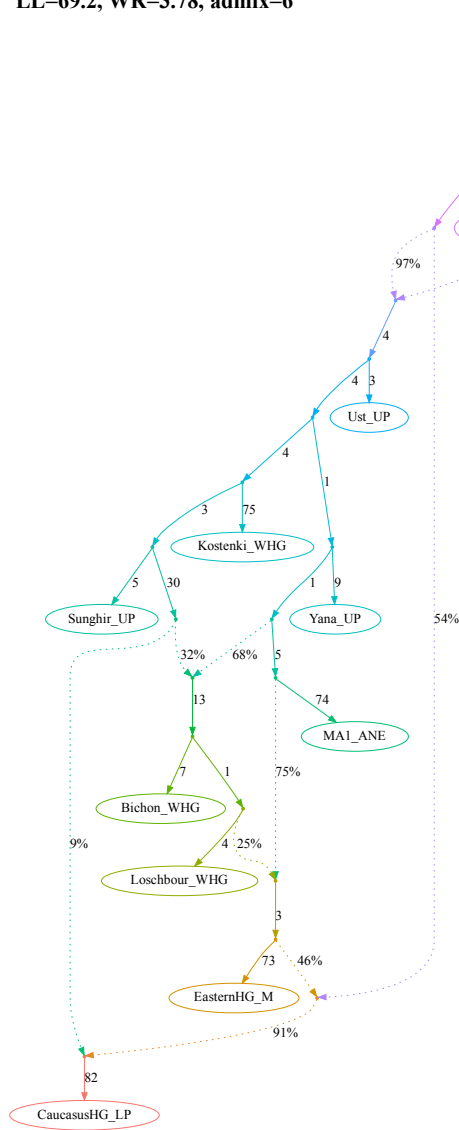


Figure S12

LL=69.2, WR=3.78, admix=6



LL=69.7, WR=3.72, admix=6

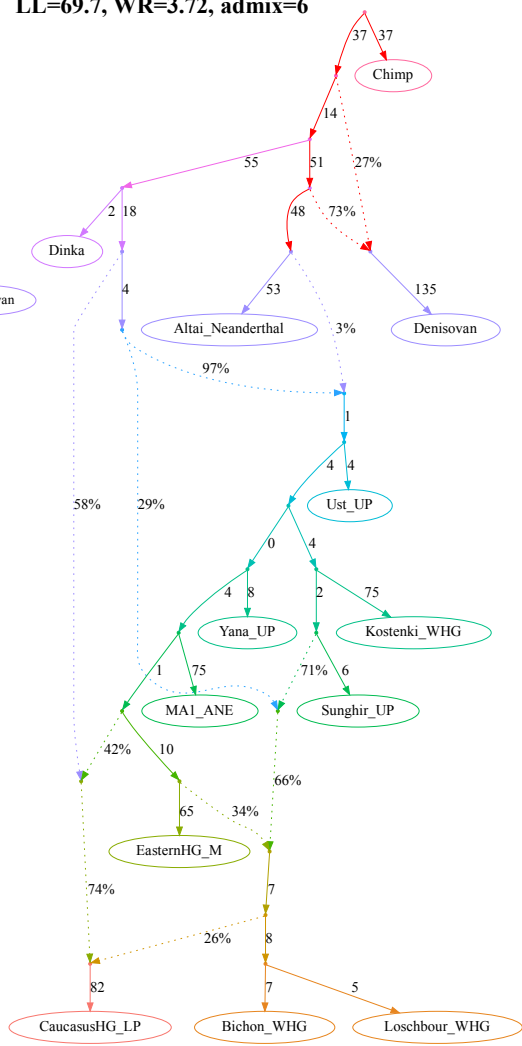
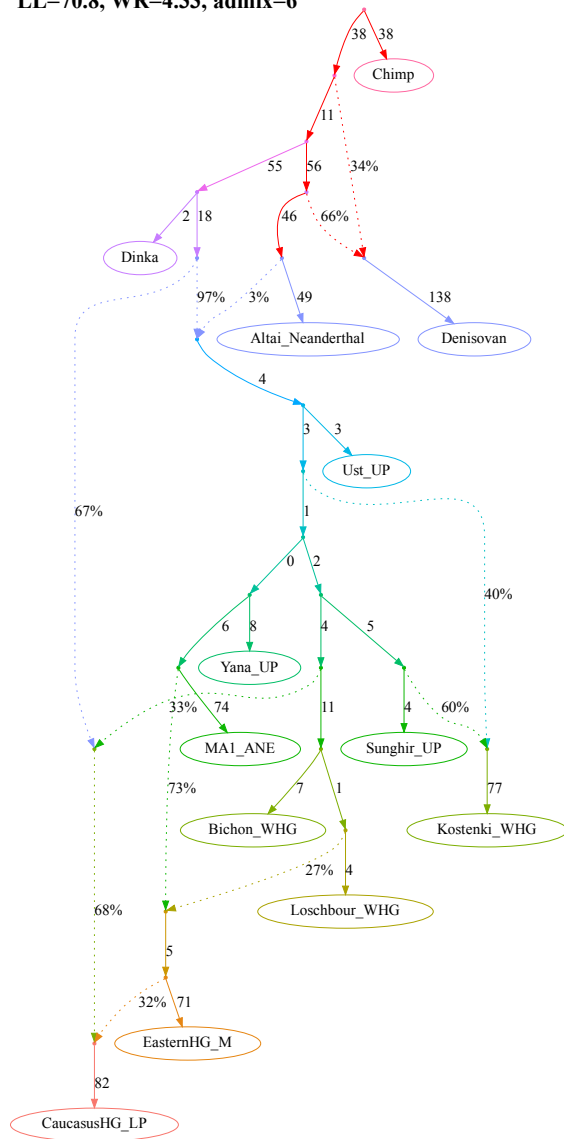


Figure S12

d, models fitting nominally better than the published one and not supporting the claim

LL=70.8, WR=4.33, admix=6



LL=71.2, WR=4.33, admix=6

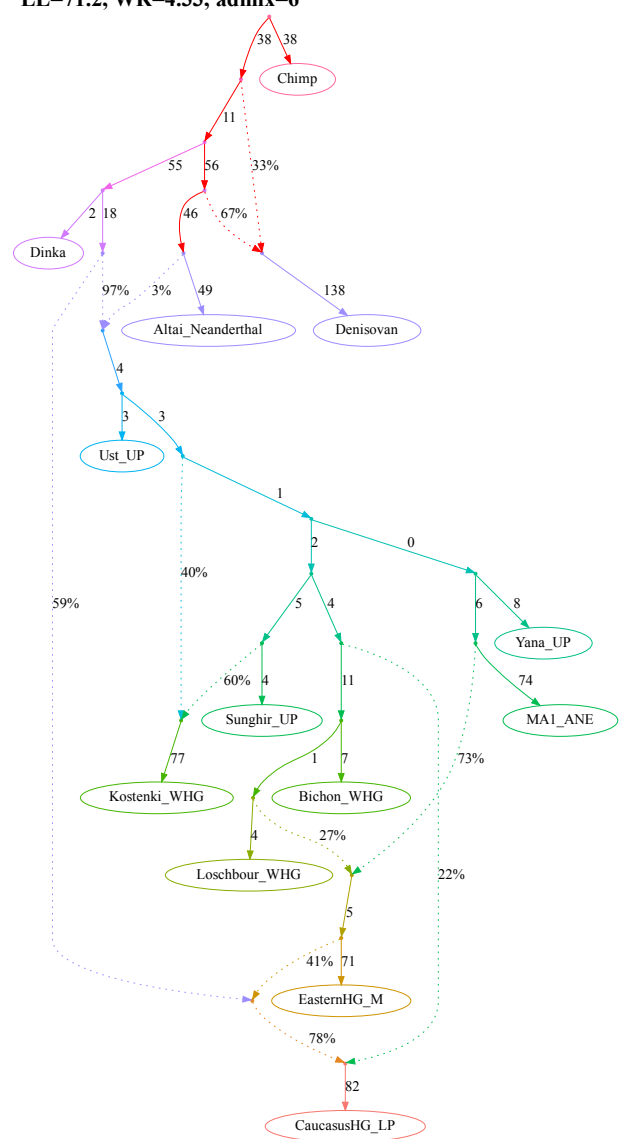


Figure S12

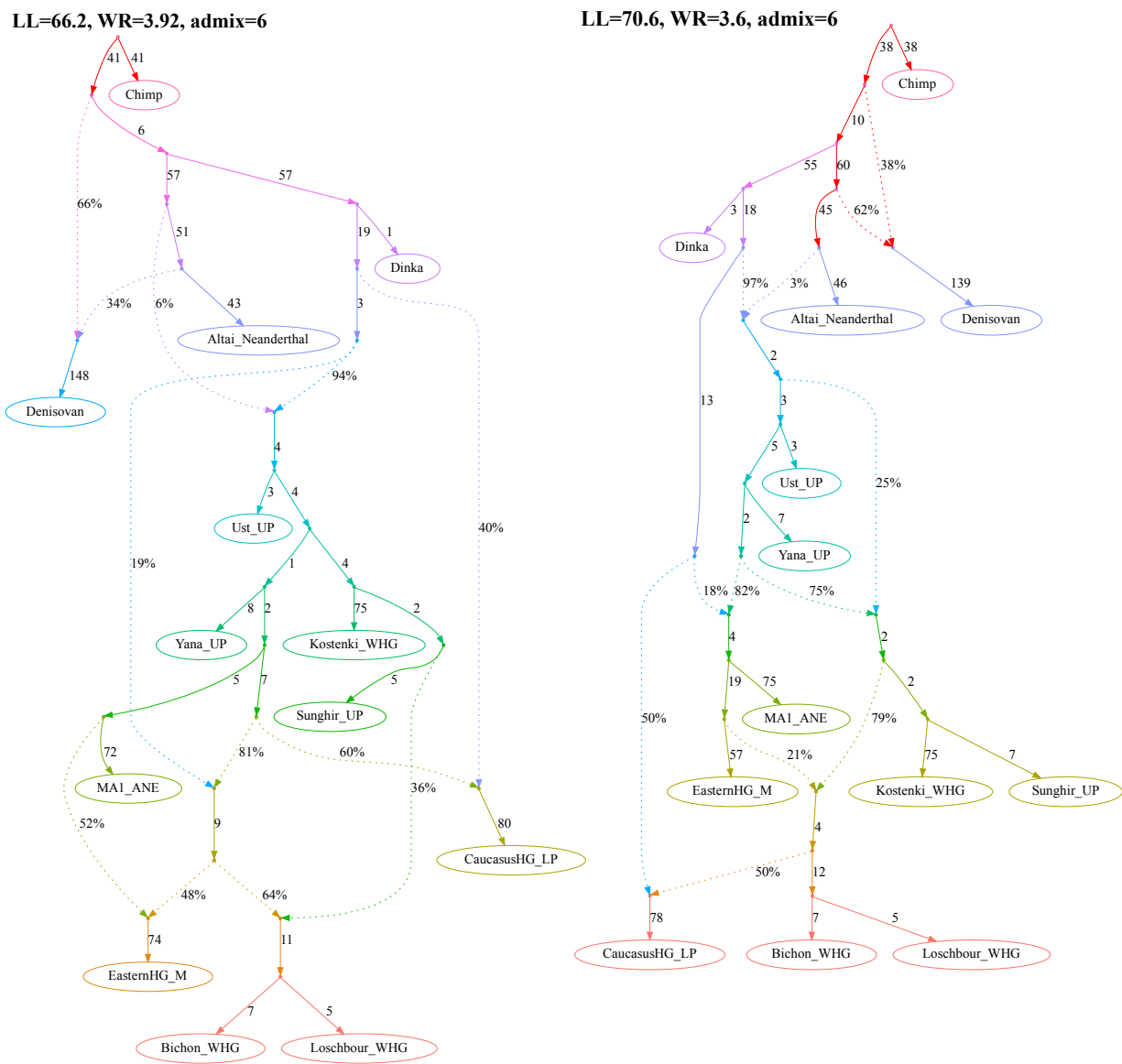
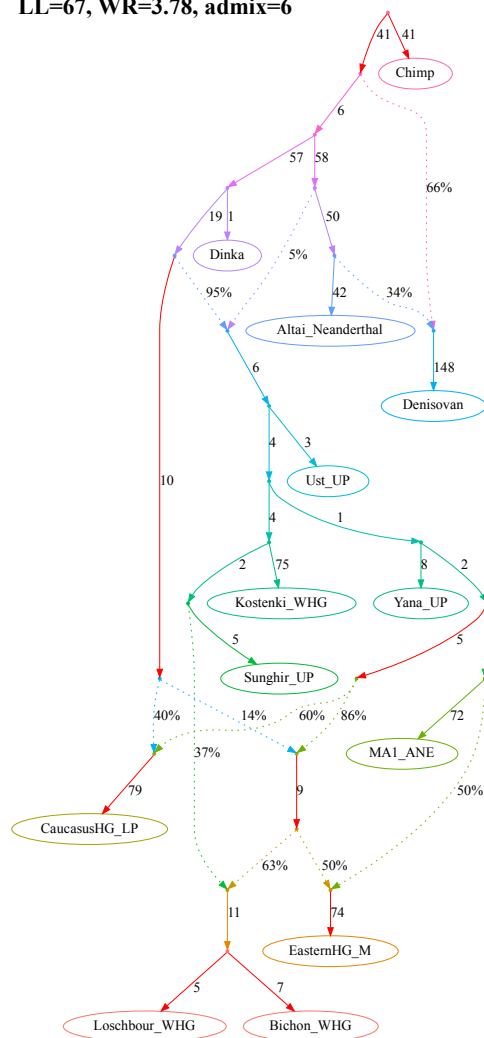


Figure S12

e, models fitting nominally better than the published one and not supporting the claim

LL=67, WR=3.78, admix=6



LL=67, WR=3.78, admix=6

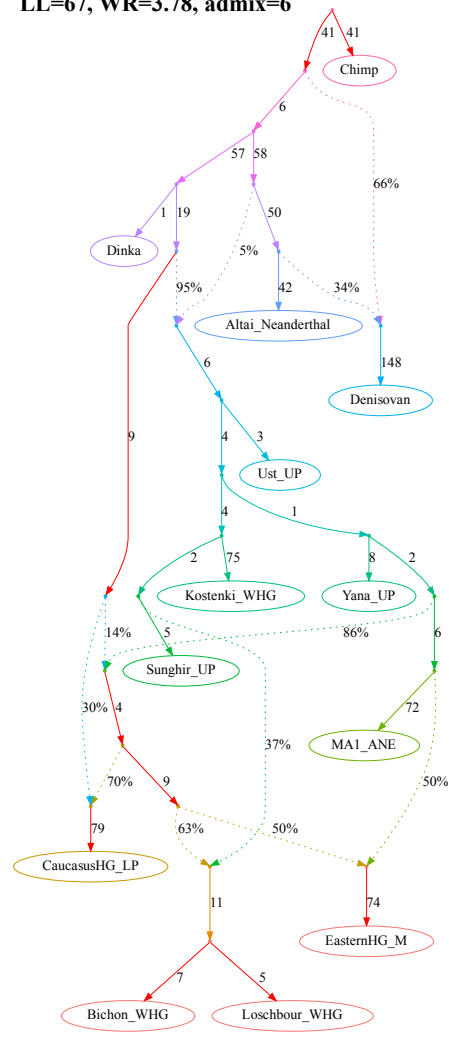
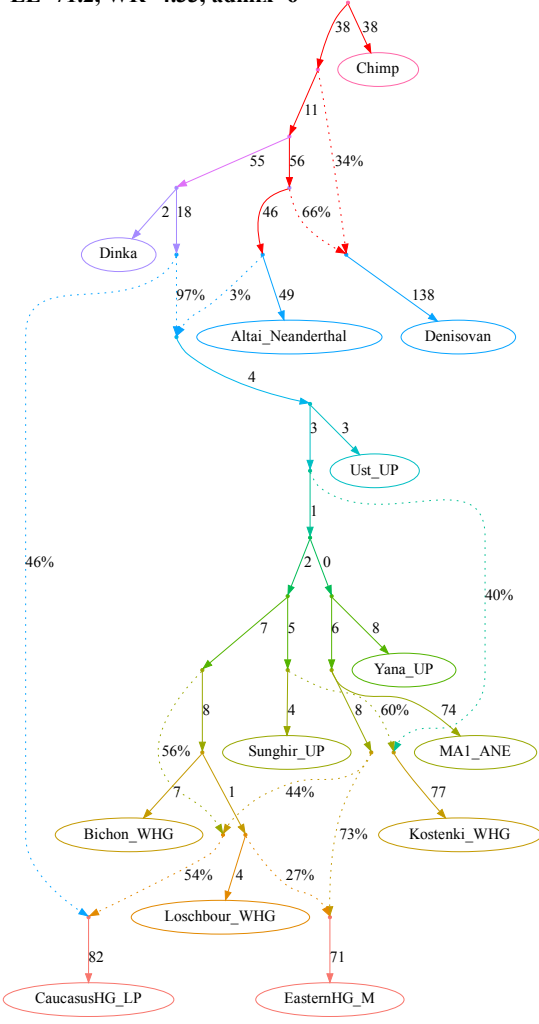


Figure S12

LL=71.2, WR=4.33, admix=6



LL=70.7, WR=4.33, admix=6

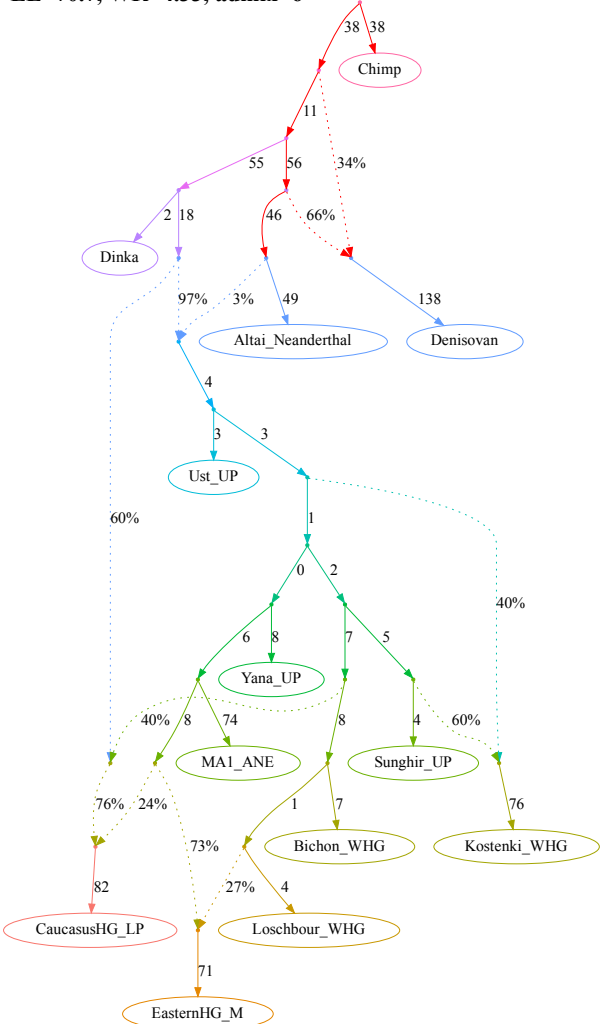


Figure S12

f, models fitting nominally better than the published one and not supporting the claim

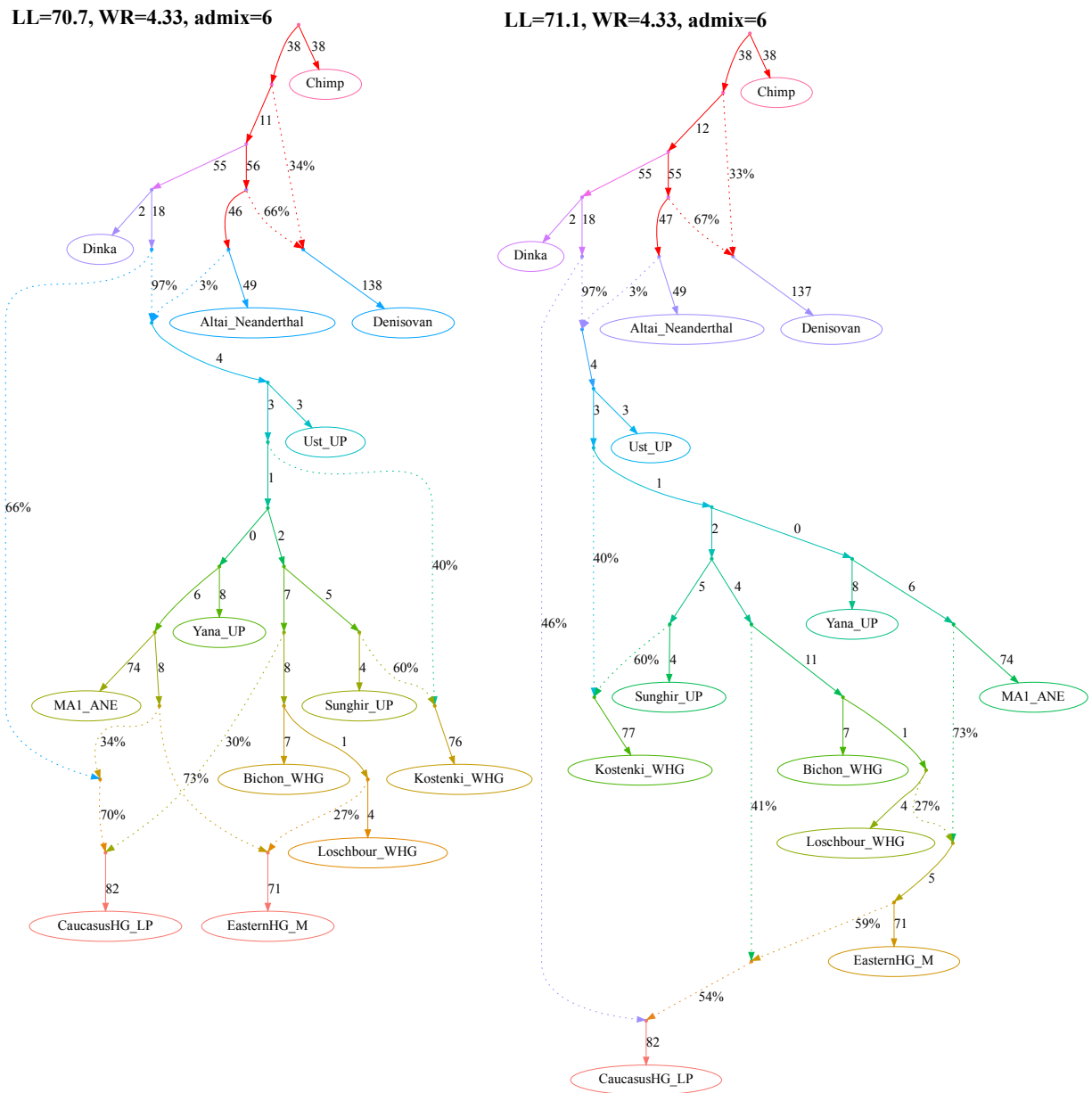
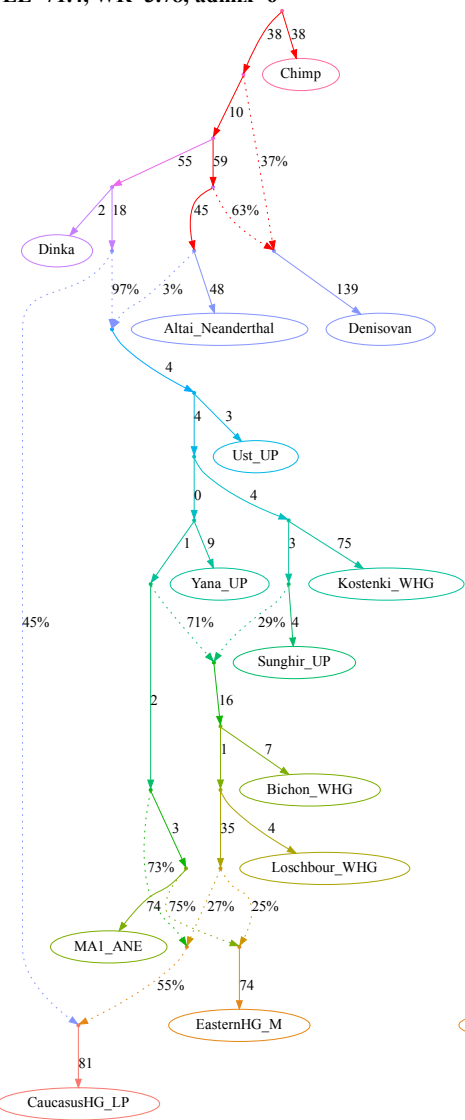


Figure S12

LL=71.4, WR=3.78, admix=6



LL=72.2, WR=3.78, admix=6

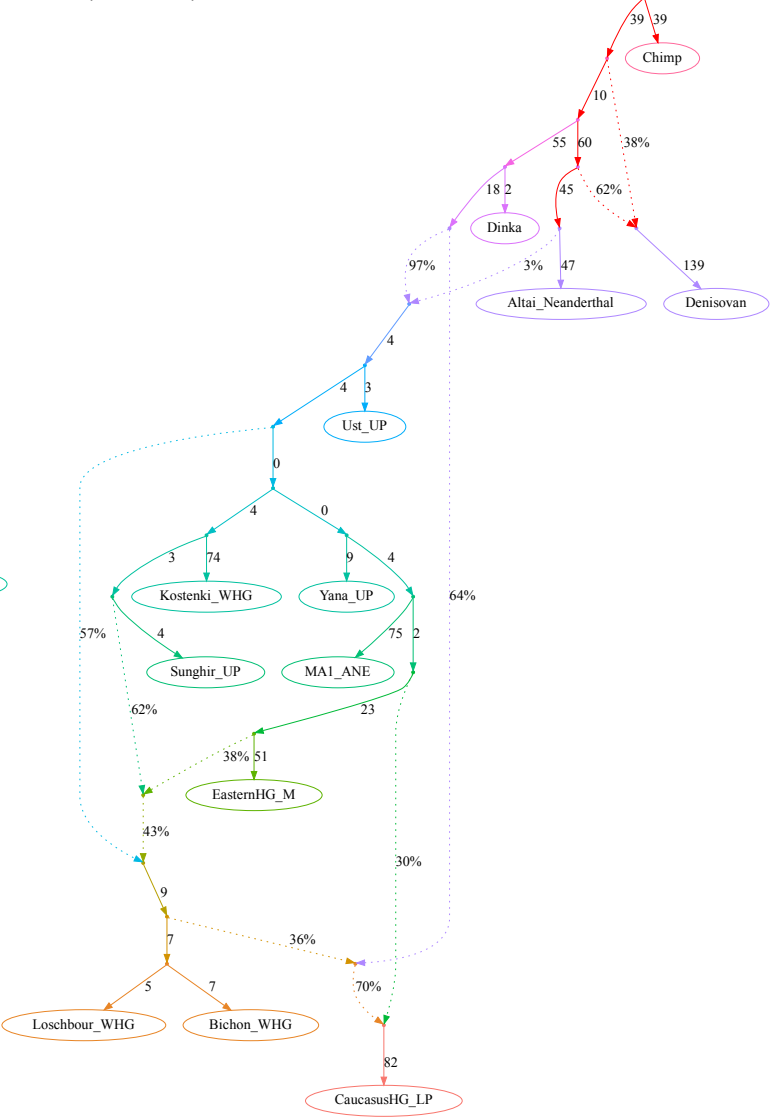
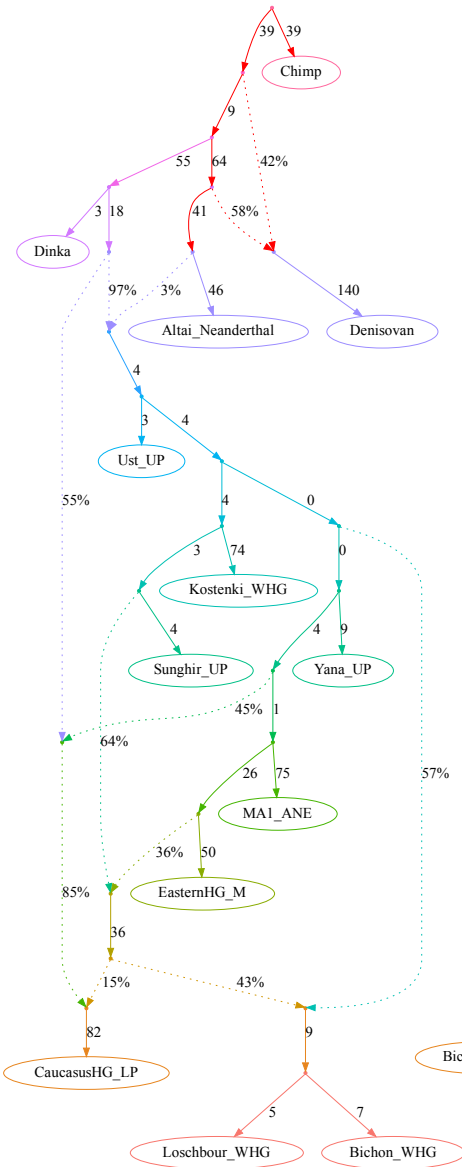


Figure S12

g, models fitting nominally better than the published one and not supporting the claim

LL=72.7, WR=3.78, admix=6



LL=73.2, WR=3.78, admix=6

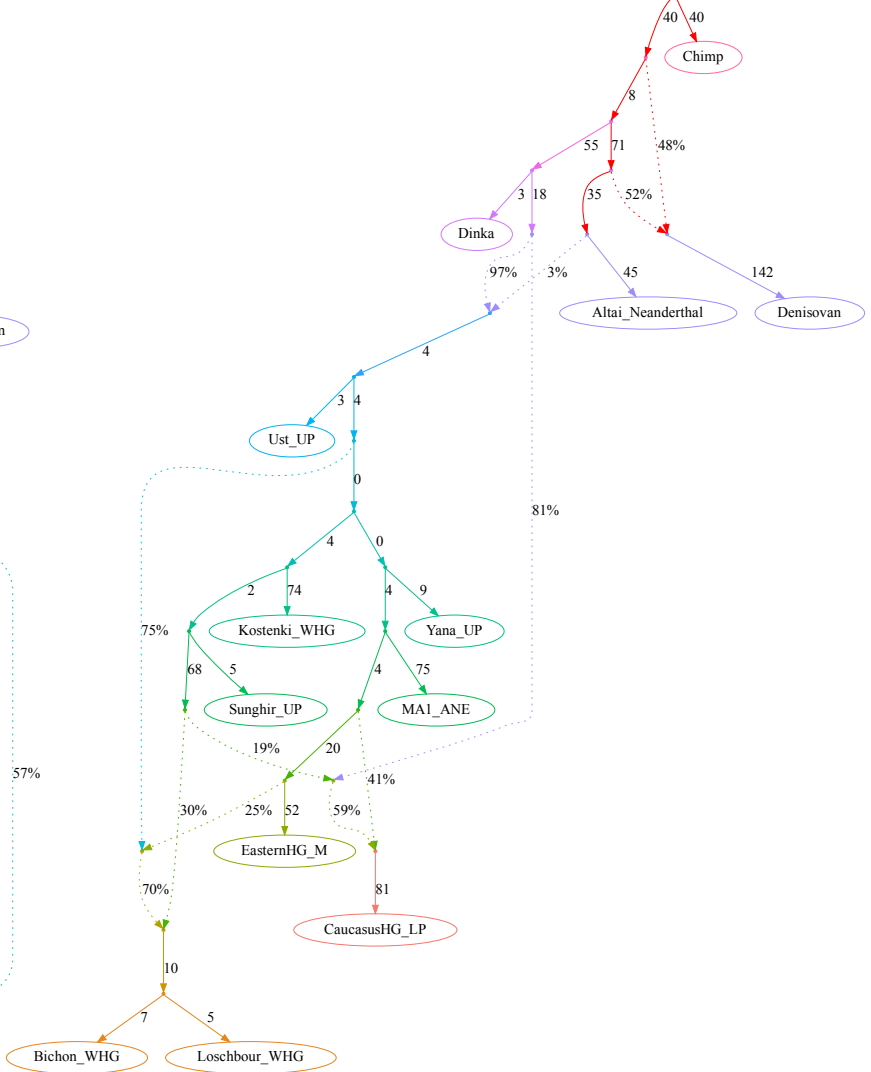
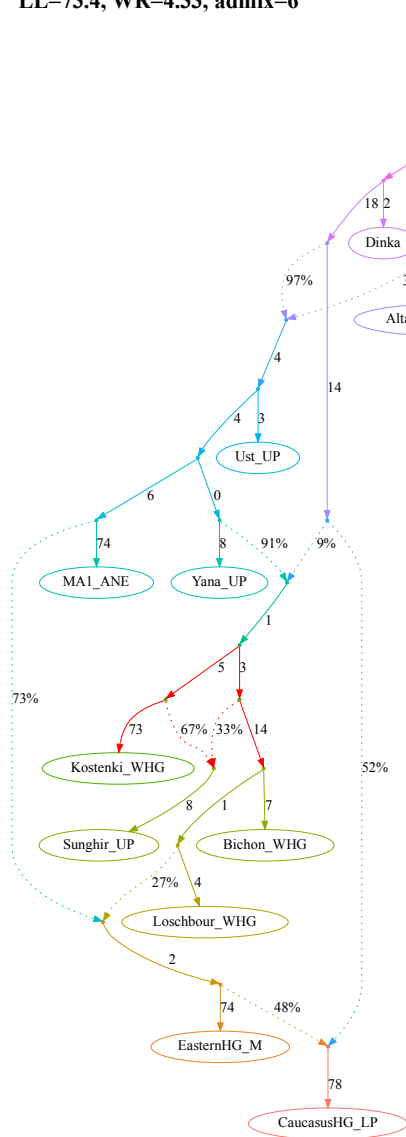


Figure S12

LL=73.4, WR=4.33, admix=6



LL=73.9, WR=3.39, admix=6

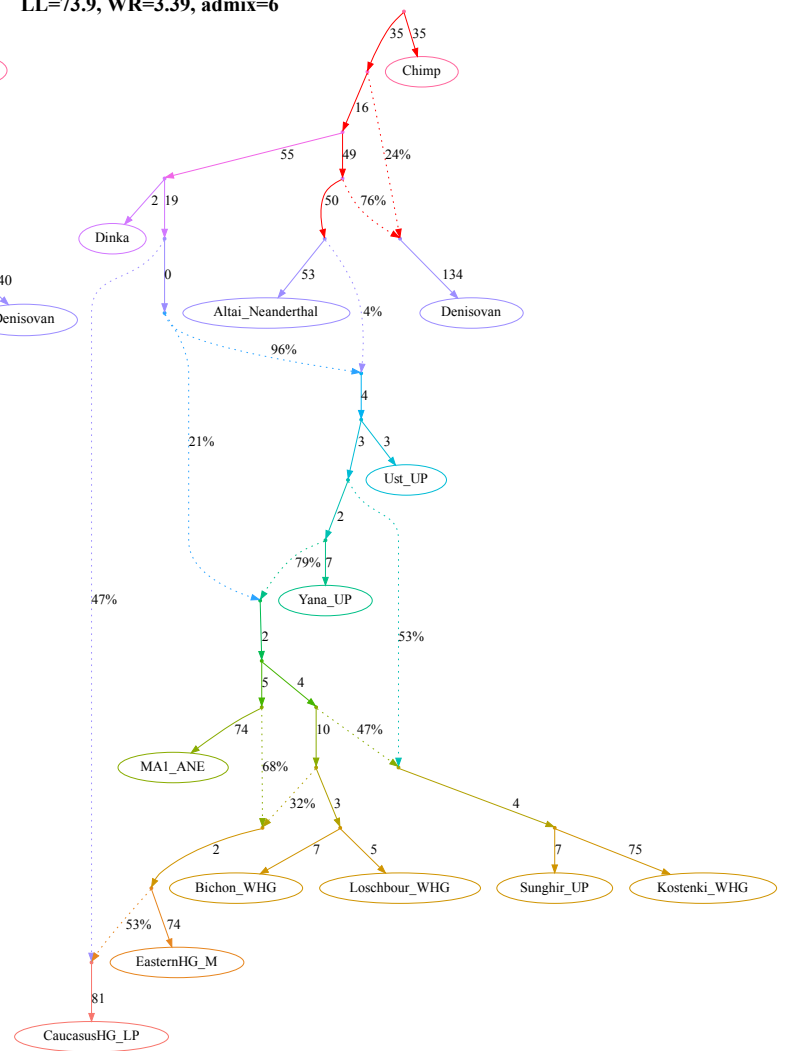
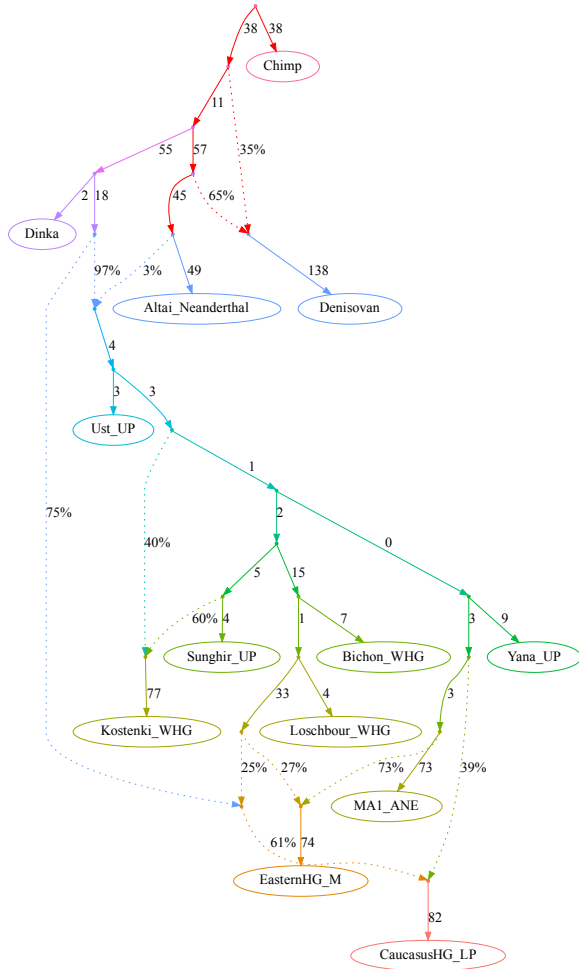


Figure S12

h, models fitting nominally better than the published one and not supporting the claim

LL=74.2, WR=4.33, admix=6



LL=74.2, WR=4.33, admix=6

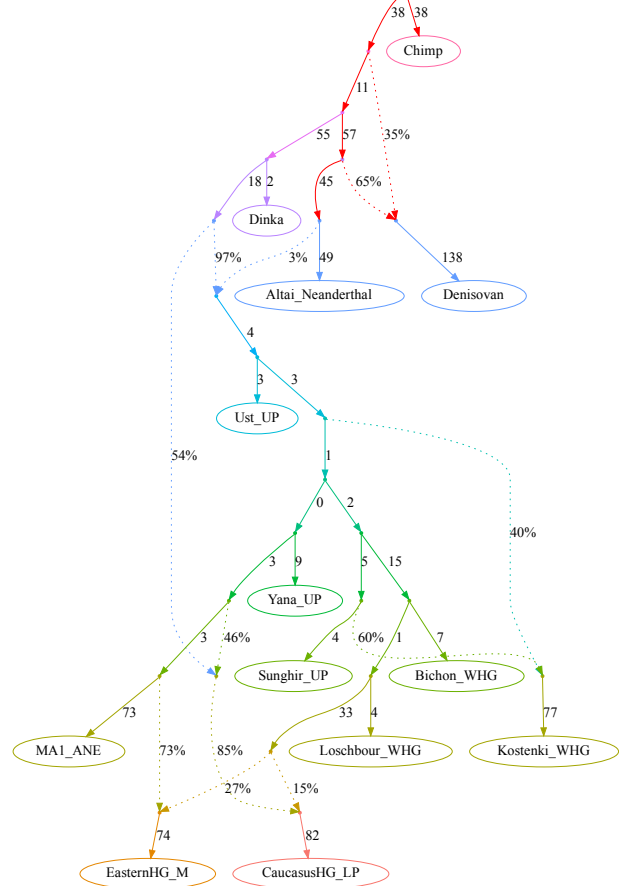


Figure S12

LL=75.1, WR=4.33, admix=6

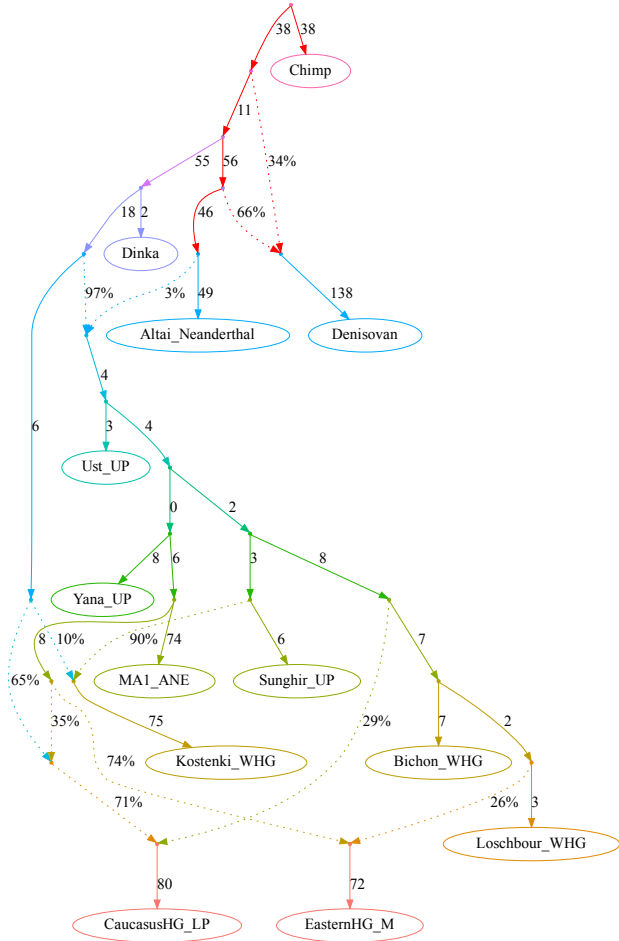
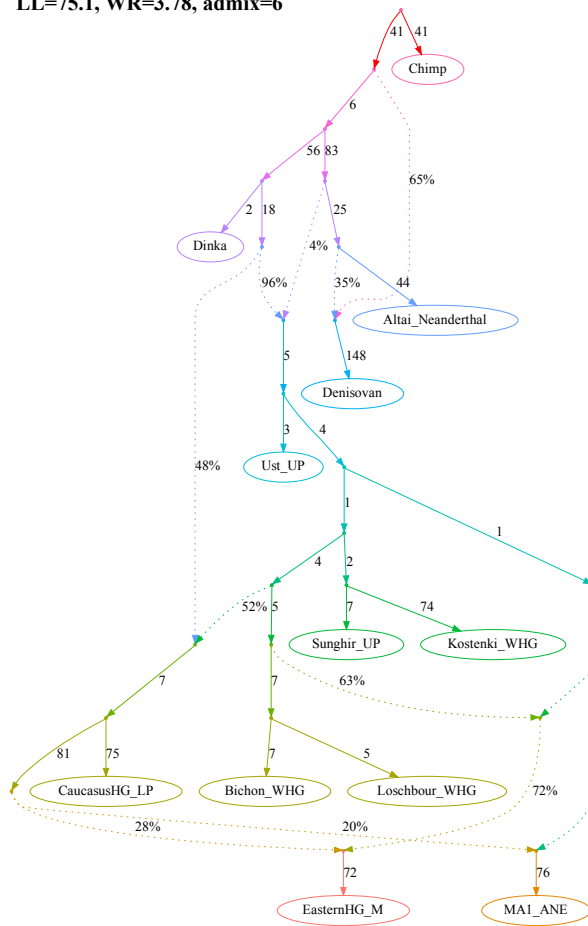


Figure S12

i, models fitting nominally better than the published one and supporting the claim

LL=75.1, WR=3.78, admix=6



LL=75.9, WR=3.78, admix=6

