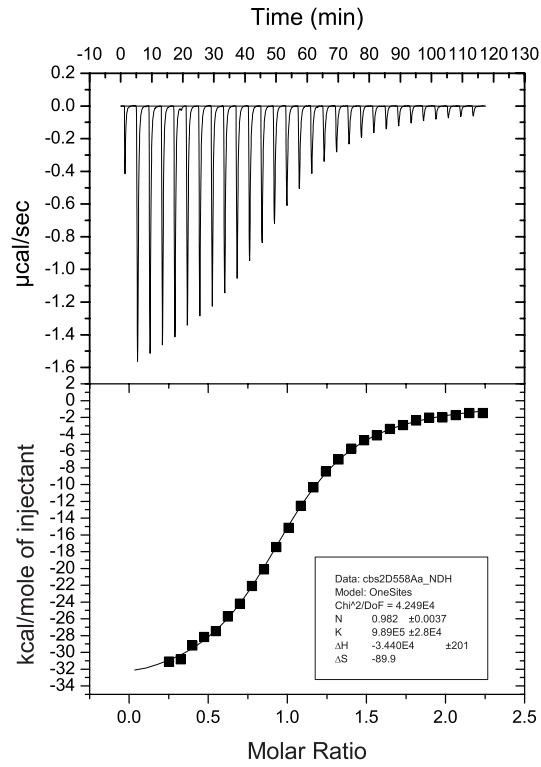
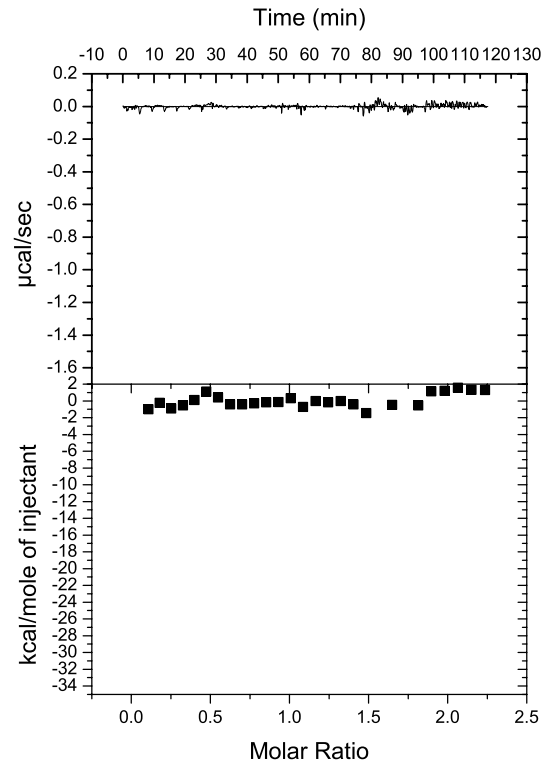


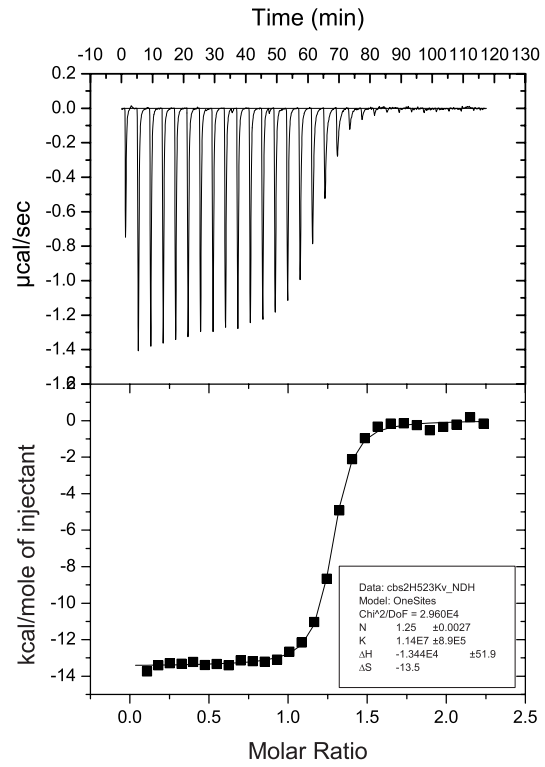
30  $\mu$ M CNNM2 429-584/45  $\mu$ M PRL2 (1-163)  
300  $\mu$ M ARL15 32-197



30  $\mu$ M CNNM2 429-584 **D558A**  
300  $\mu$ M ARL15 32-197



15  $\mu$ M CNNM2 429-584 **D558A**  
150  $\mu$ M PRL2 (1-163)



30  $\mu$ M CNNM2 429-584 **H523K**  
300  $\mu$ M PRL2 (1-163)