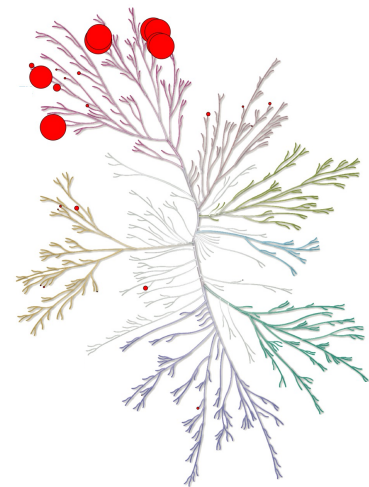
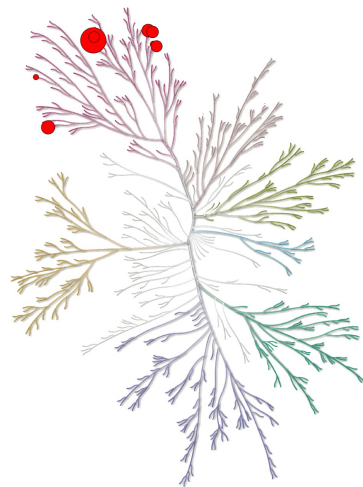


A

Imatinib Target: ABL1-phosphorylated
 JSD score = 0.959
 Imatinib K_d = 21 nM (Davis *et al*)
 [Imatinib] = 189 nM



Imatinib Target: ABL1-nonphosphorylated
 JSD score = 0.980
 Imatinib K_d = 1.1 nM (Davis *et al*)
 [Imatinib] = 9.9 nM

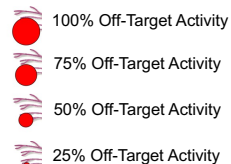
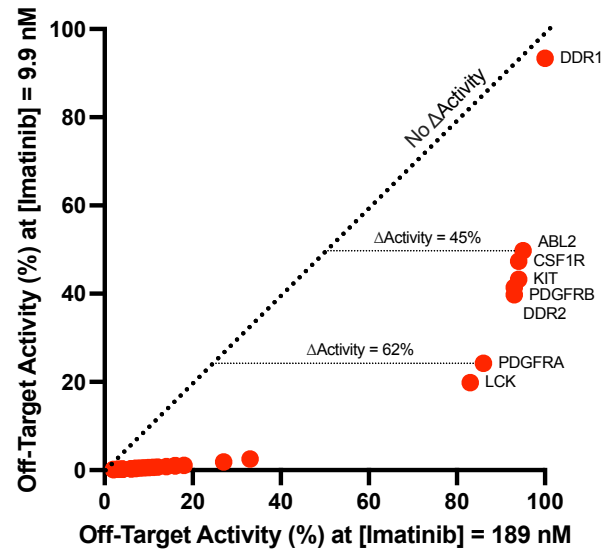
**B**

Figure 2 Figure Supplement 3