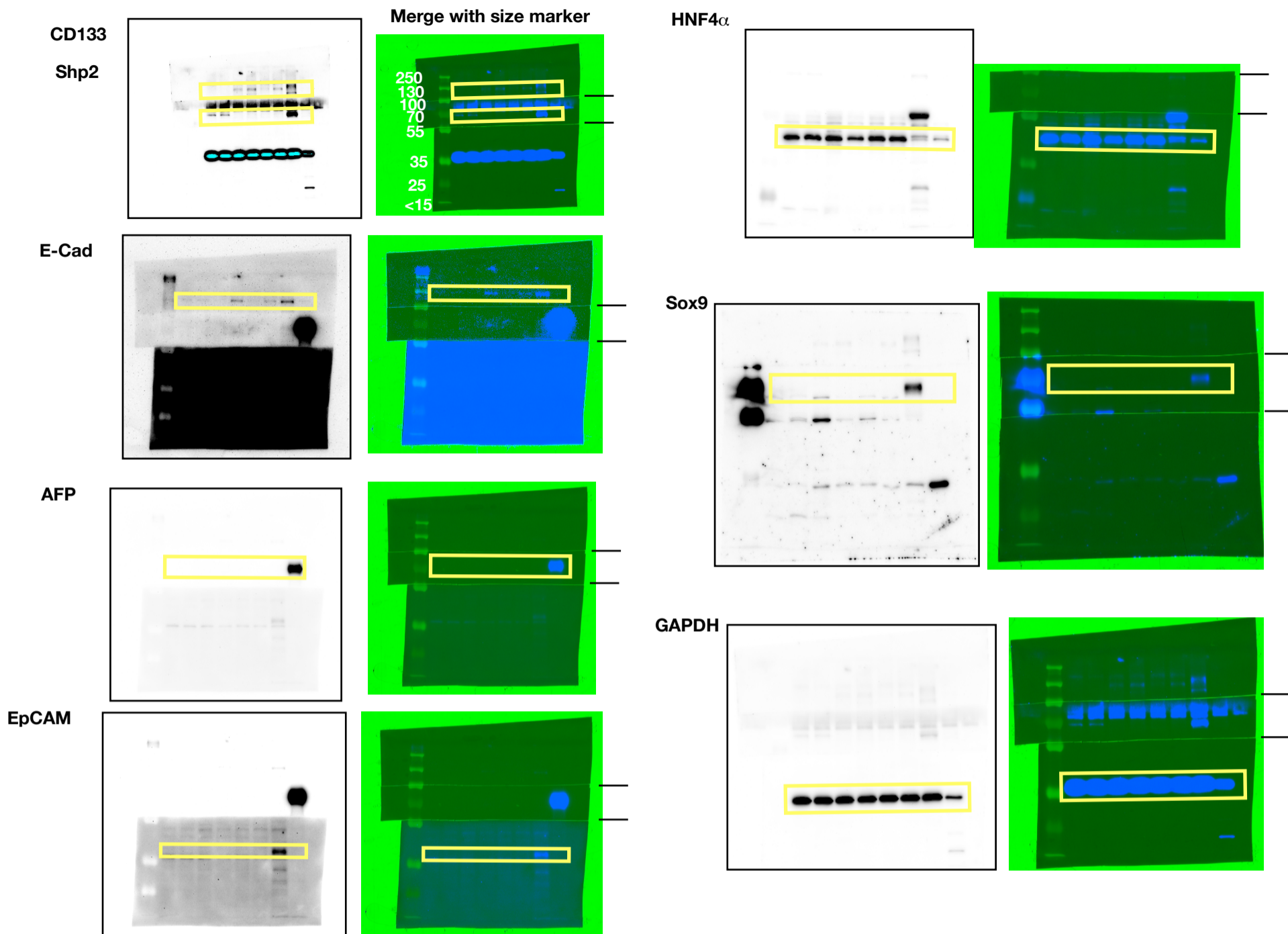


Fig. 2E; western blot



Only one linear adjustment was performed from raw data to figures (including inside the imaging instrument)

Due to the limited amount of the protein lysates (tiny tissue fragments were dissected from tissue sections), membranes were cut into multiple pieces and incubated for different antibodies. For some targets, same pieces were re-used after deactivation of HRP. In these cases, antibodies from different hosts were used for the second targets to specifically detect the signals