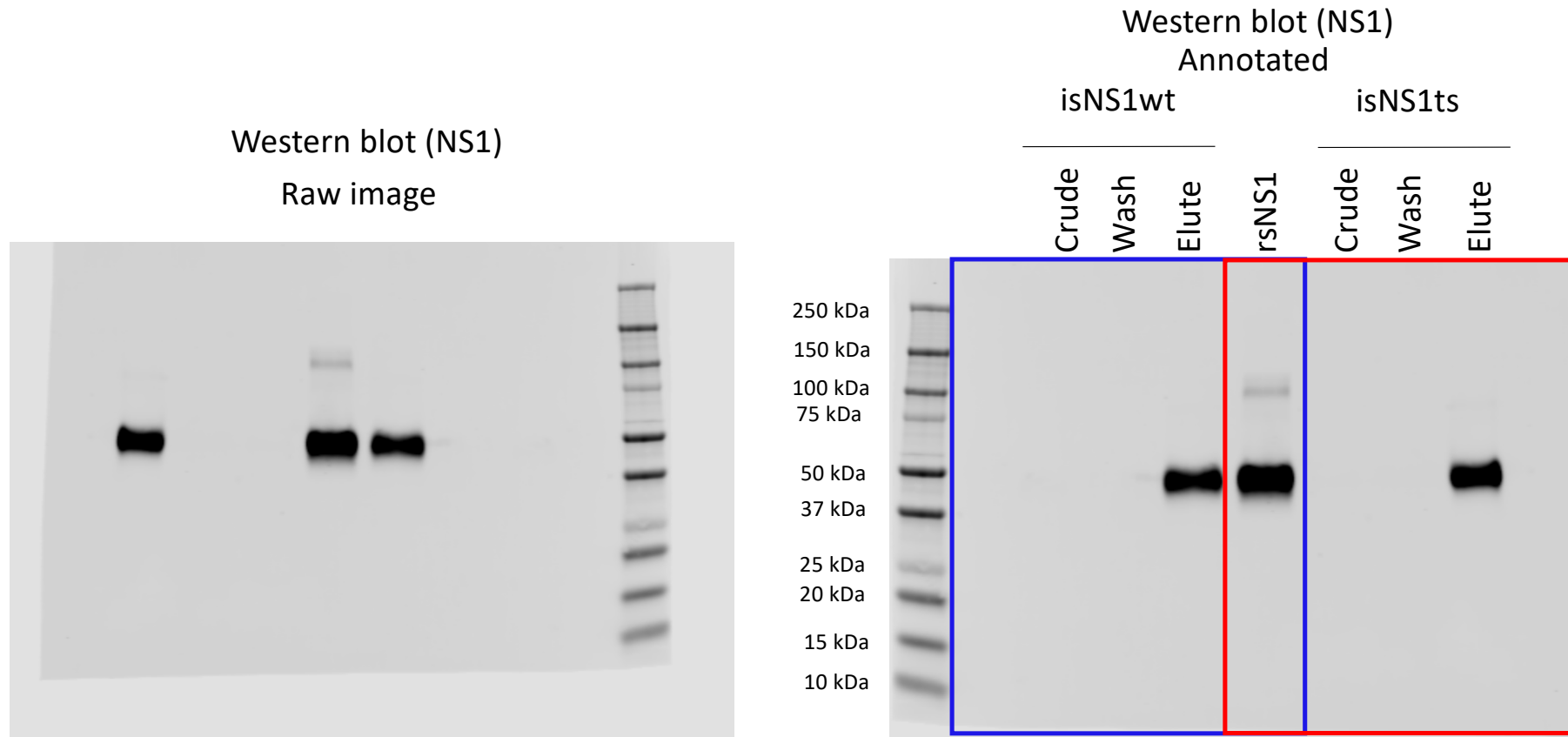


Figure 1c-source data 2 Raw and annotated image for the western blot analysis (anti-NS1)



Remarks: Raw image is flipped horizontally. Annotated version on the right shows the correct orientation, where isNS1wt samples (crude, wash and elute) are shown to the left of rsNS1 (Fig. 1c) (in blue), while isNS1ts samples (crude, wash and elute) are shown to the right of rsNS1 (Supp Fig. 3b) (in red).