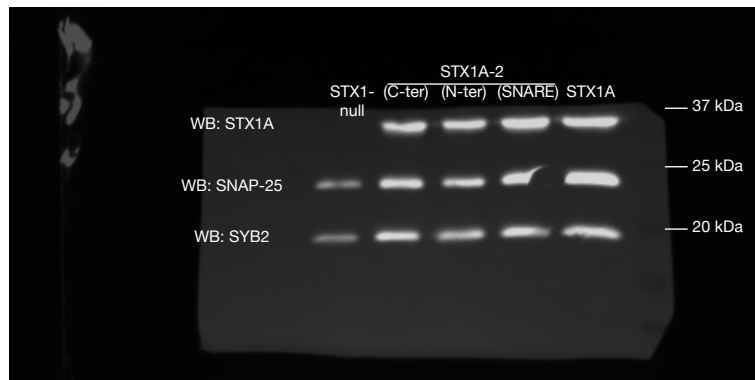


Neuronal lysates, blot **Figure 4D**. Superposition of detected protein and the image of the marker, Blot's opacity was reduced 30% for the visualization of the marker

In Figure 4. the blot was flipped horizontally for visualization purposes

Blot is cut between 50kDa and 37kDa for detection purposes



Neuronal lysates, blot **Figure 4D**. Superposition of detected protein and the image of the marker, Blot's opacity was reduced 30% for the visualization of the marker

In Figure 4. the blot was flipped horizontally for visualization purposes