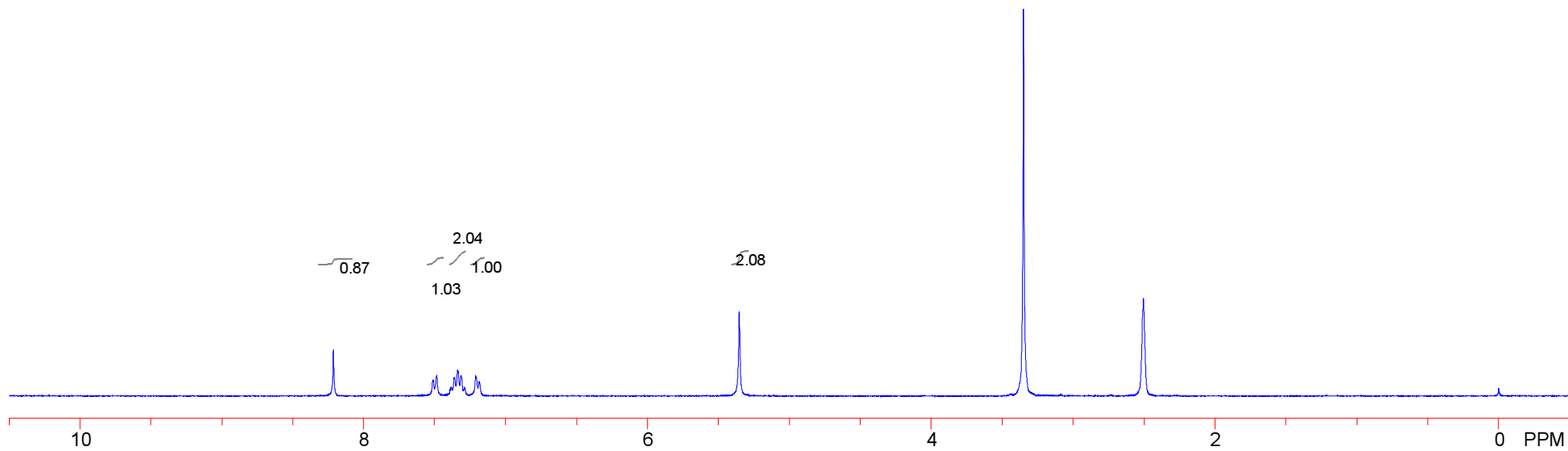
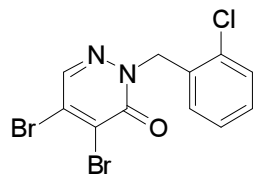




Varian Mercury Plus: 300 MHz

Solvent: DMSO

Y1359-08443-024



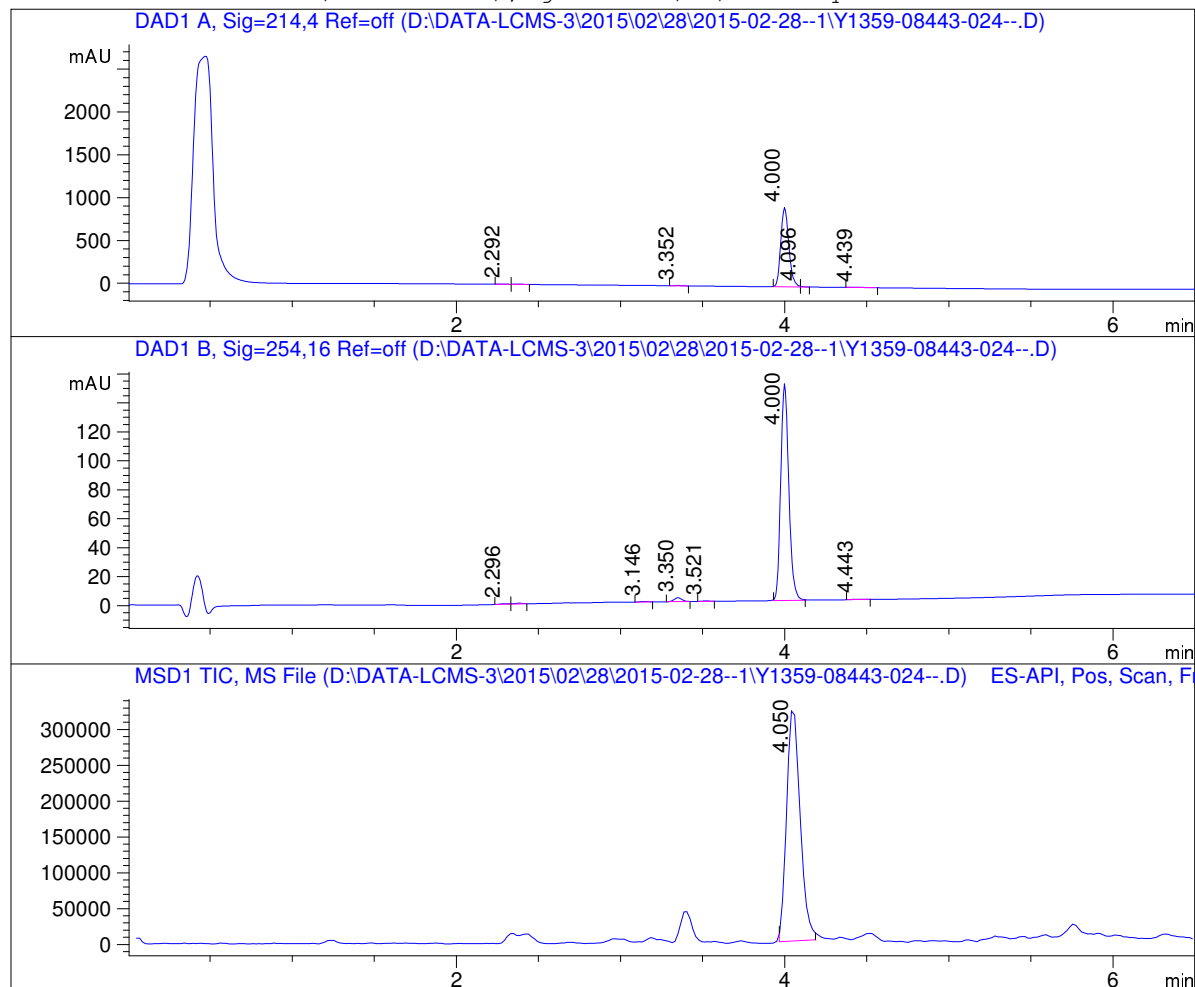


Sundia Meditech Co.Ltd

QC Report

388 Jialilue Road
Zhangjiang Hightech Park
Shanghai, China
Post code : 201203
Tel : 8621-51098642
Fax : 8621-51903505

Sample Name : Y1359-08443-024
Data File : D:\DATA-LCMS-3\2015\02\28\2015-02-28--1\Y1359-08443-02->
Injection Date : Sat, 28. Feb. 2015 Inj. Vol. : 2ul
Acq Operator : Shao Yan Location : Vial 4
Acq. Method : D:\DATA-LCMS-3\2015\02\28\2015-02-28--1\P-30-95.M
Sample Info.:
Methods Info: column:C18;column size:4.6*50mm ;mobile phase:B(ACN),
A(0.02%NH4Ac); gradient(B%):as Acq.Method above



Integration Results

Signal 1: DAD1 A, Sig=214,4 Ref=off

#	R.T.	Type	Height	Height%	Width	Area	Area %
1	2.292	MF	1.350	0.142	0.062	5.039	0.156
2	2.379	FM	4.603	0.485	0.056	15.501	0.481
3	3.352	MF	4.205	0.443	0.055	13.969	0.434
4	4.000	FM	928.564	97.871	0.057	3164.489	98.265
5	4.096	FM	7.268	0.766	0.015	6.688	0.208
6	4.439	MF	2.777	0.293	0.088	14.675	0.456

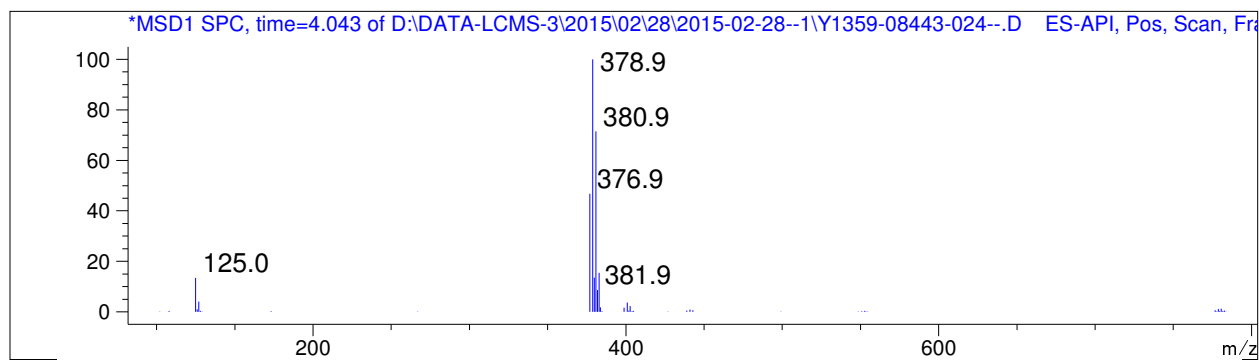
#	R.T.	Type	Height	Height%	Width	Area	Area %
---	------	------	--------	---------	-------	------	--------

Signal 2: DAD1 B, Sig=254,16 Ref=off

#	R.T.	Type	Height	Height%	Width	Area	Area %
1	2.296	MF	0.367	0.237	0.054	1.187	0.225
2	2.384	FM	0.530	0.343	0.057	1.803	0.341
3	3.146	MM	0.432	0.280	0.054	1.411	0.267
4	3.350	MF	2.661	1.723	0.054	8.696	1.646
5	3.521	FM	0.297	0.192	0.060	1.076	0.204
6	4.000	BB	149.820	97.008	0.054	512.694	97.043
7	4.443	MM	0.334	0.216	0.072	1.450	0.274

Signal 3: MSD1 TIC, MS File

#	R.T.	Type	Height	Height%	Width	Area	Area %
1	4.050	FM	330220.750	100.000	0.093	1.846e+006	100.000



*** End of Report ***