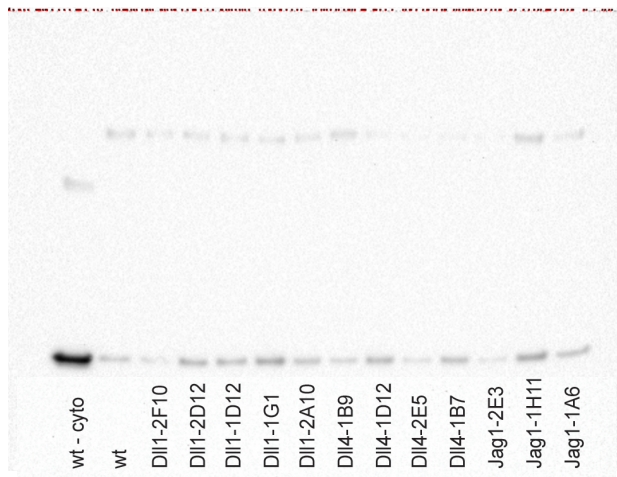
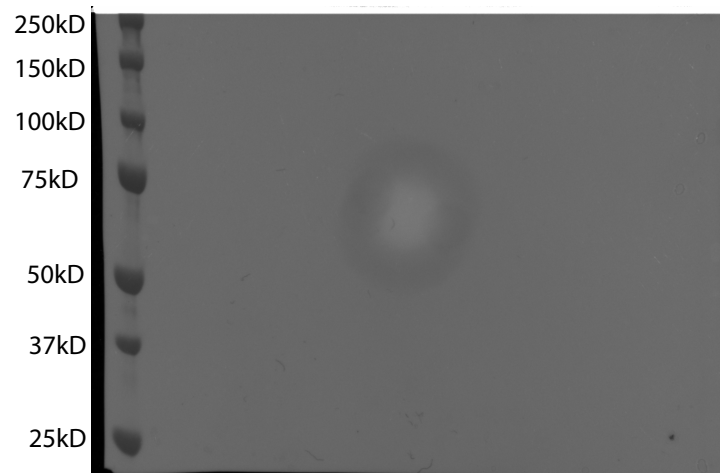


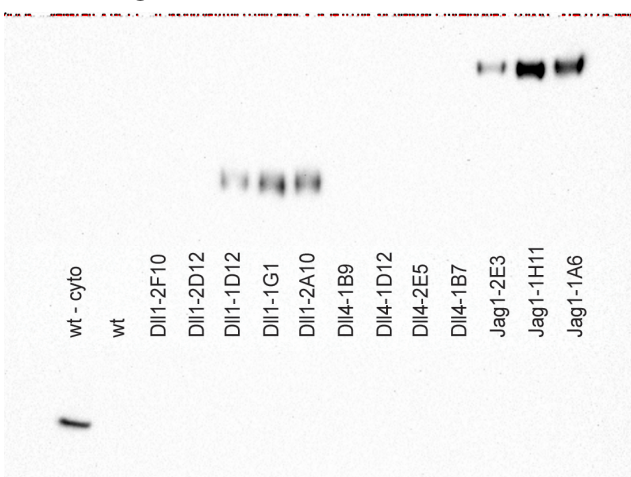
### GAPDH - Pico substrate - 10 seconds



### Ladder - Colorimetric



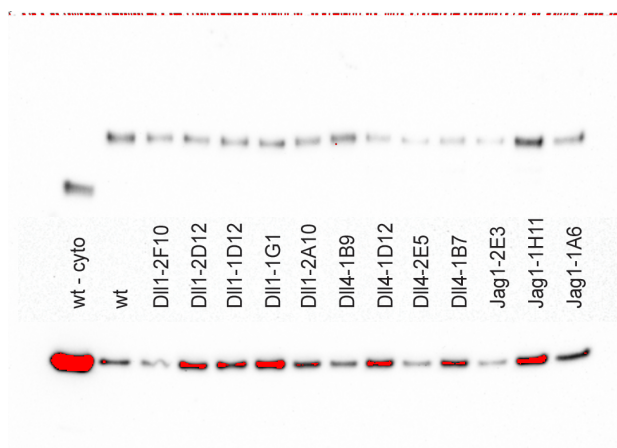
### Notch ligands - Pico substrate - 120 seconds



Jag1

DII1/DII4

### NaK ATPase - Pico substrate - 120 seconds



NaK ATPase

Figure 2 - figure supplement 2, source data 2. Original membranes corresponding to Figure 2 - figure supplement 2, panel B. Shows the quantification of surface ligand (Jag1, DII1/DII4) in CHO-K1 sender clones. GAPDH and NaK ATPase were measured as cytoplasmic fraction and surface fraction marker proteins, respectively. Precision Plus Protein Dual Color Standards (BioRad) were used for all images (upper, right blot image).