

Fig 6d:

Row 1. INH only
 Row 2. C1 Only
 Row 3: MIC of C1+ serial 2-fold dilution of INH from MIC
 Row 4: MIC of INH + serial 2-fold dilution of C1 from MIC

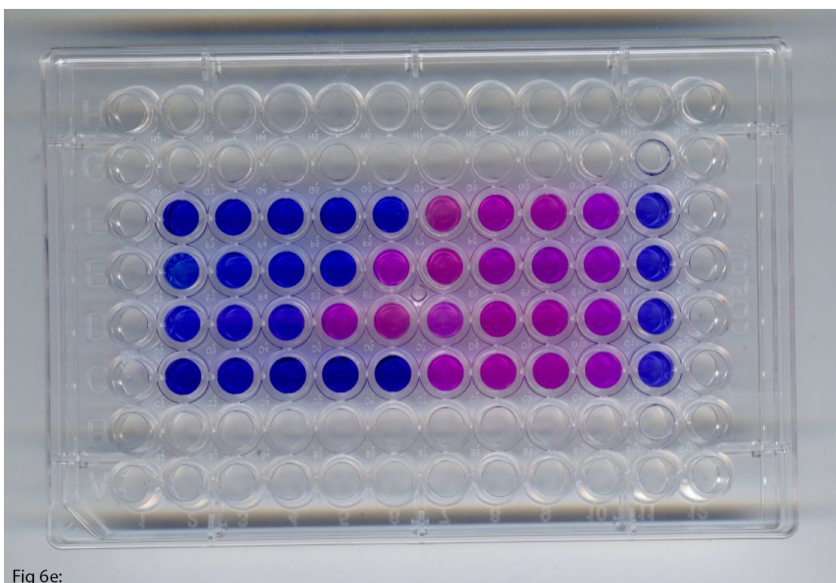


Fig 6e:

Row 1. INH only
 Row 2. C2 Only
 Row 3: MIC of C2+ serial 2-fold dilution of INH from MIC
 Row 4: MIC of INH + serial 2-fold dilution of C2 from MIC

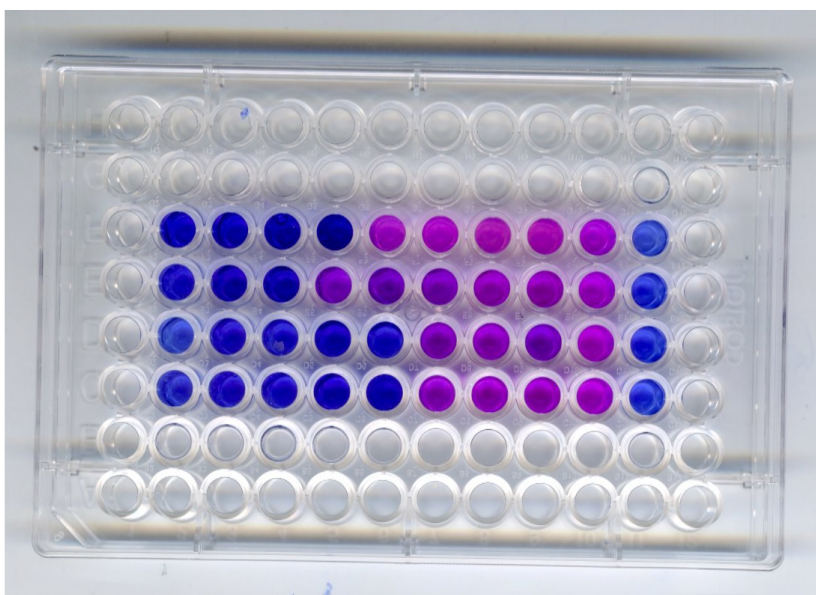


Fig 6f:

Row 1. INH only
 Row 2. Compound C3
 Row 3: MIC of C3 + serial 2-fold dilution of INH from MIC
 Row 4: MIC of INH + serial 2-fold dilution of C3 from MIC