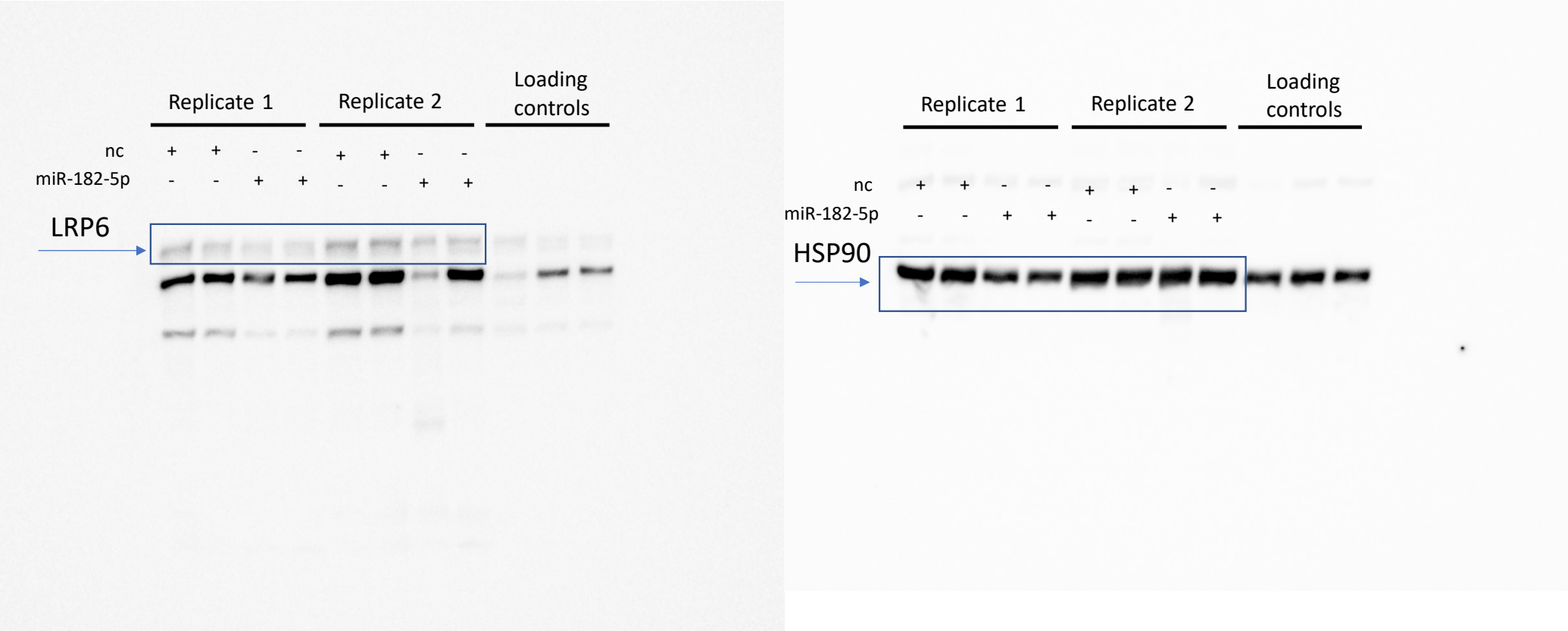
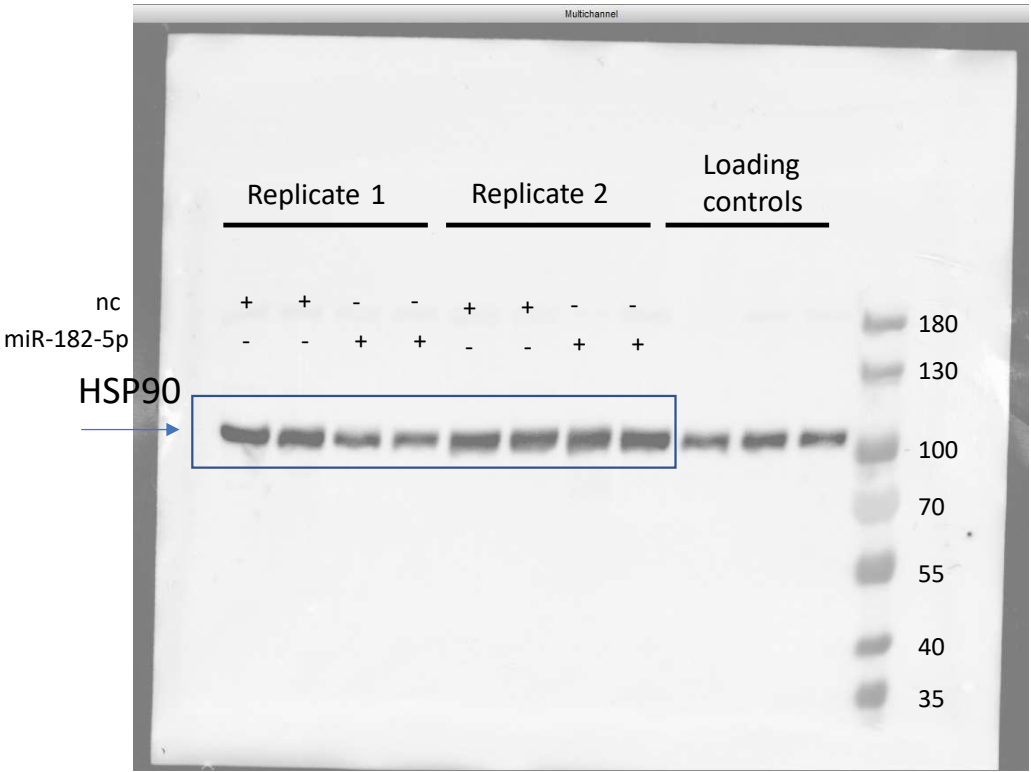
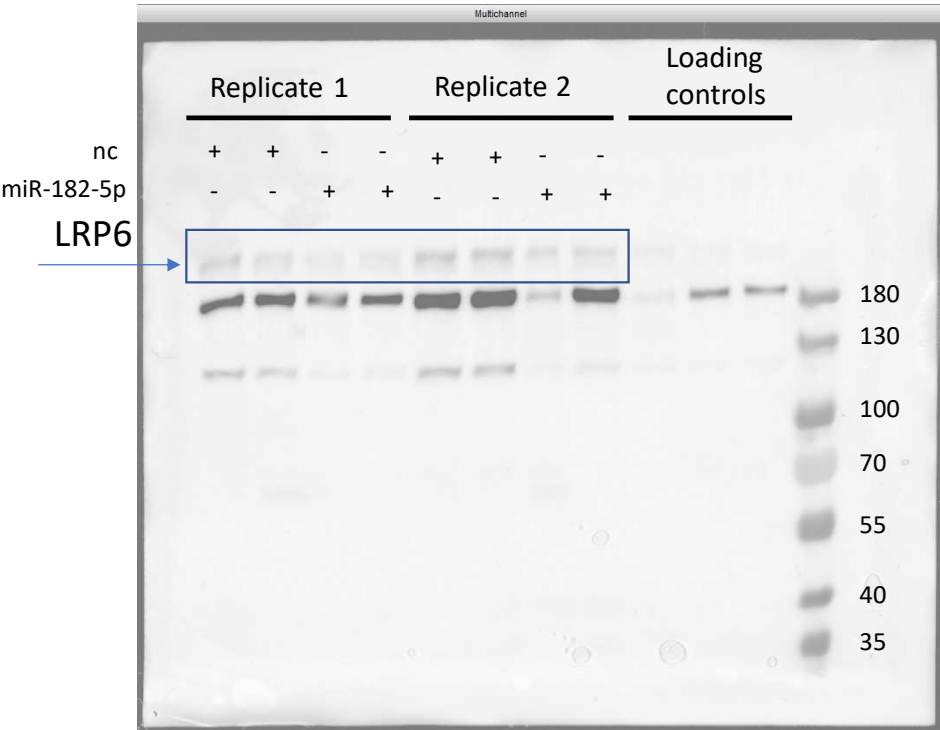


Figure 2 E (1/4): Chemiluminescence image of biological replicate 1 and 2



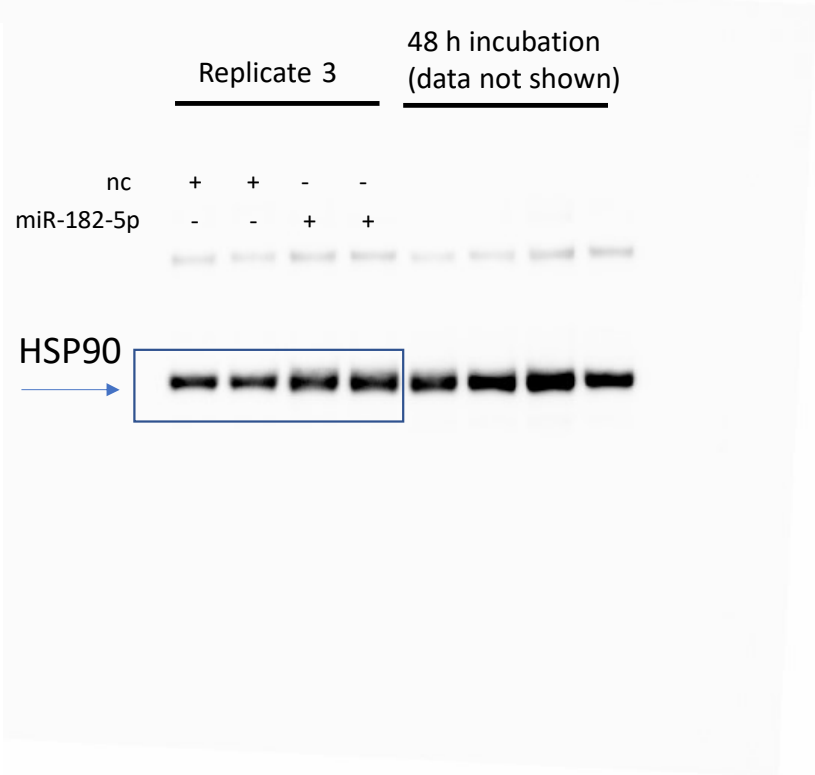
Parts of the blot used for quantification are indicated by a blue box

Figure 2 E (2/4): Multichannel image of replicate 1 and 2 with marker



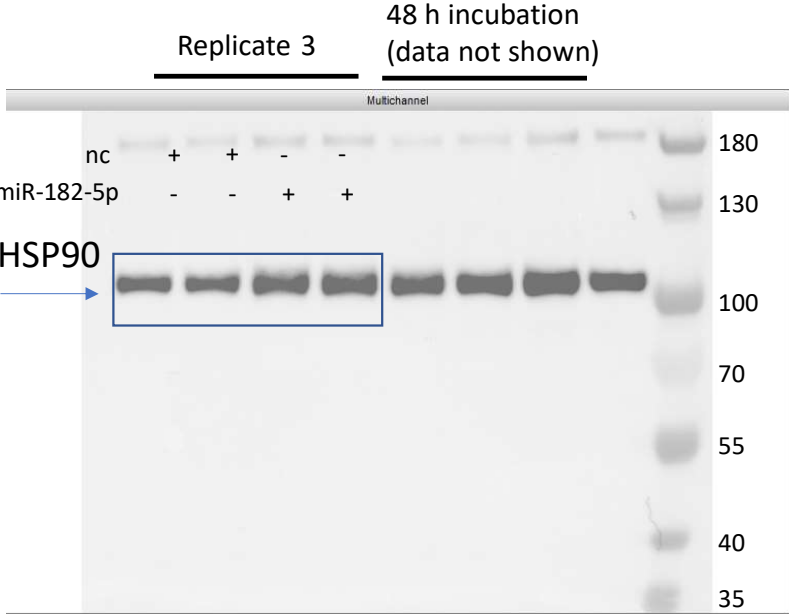
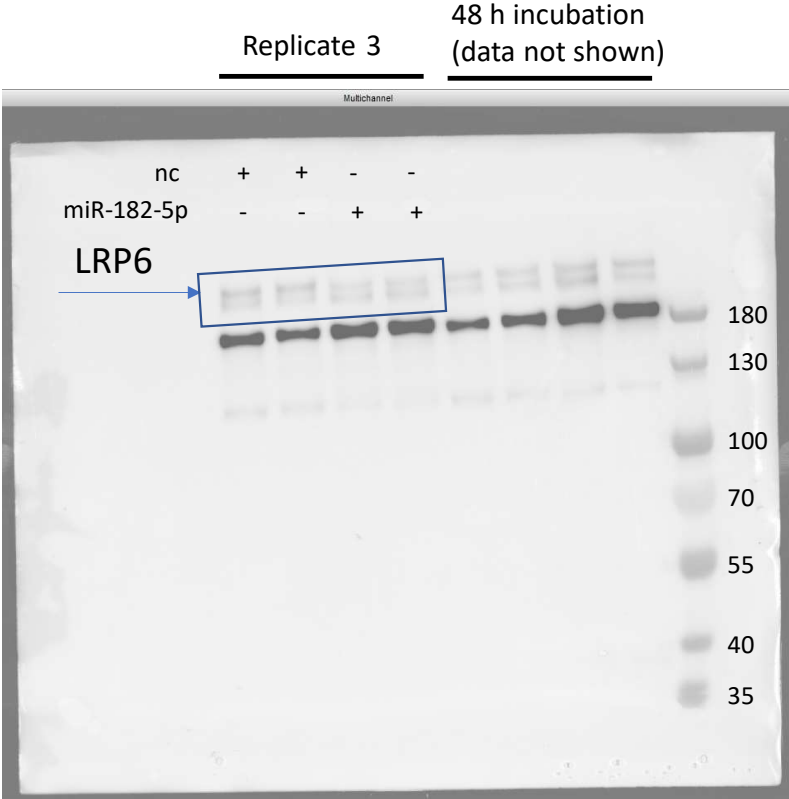
Parts of the blot used for quantification are indicated by a blue box

Figure 2 E (3/4): Chemiluminescence image of biological replicate 3



Parts of the blot used for quantification are indicated by a blue box

Figure 2 E (4/4): Multichannel image of replicate 3 with marker



Parts of the blot used for quantification are indicated by a blue box