

Figure 1 - source data 4

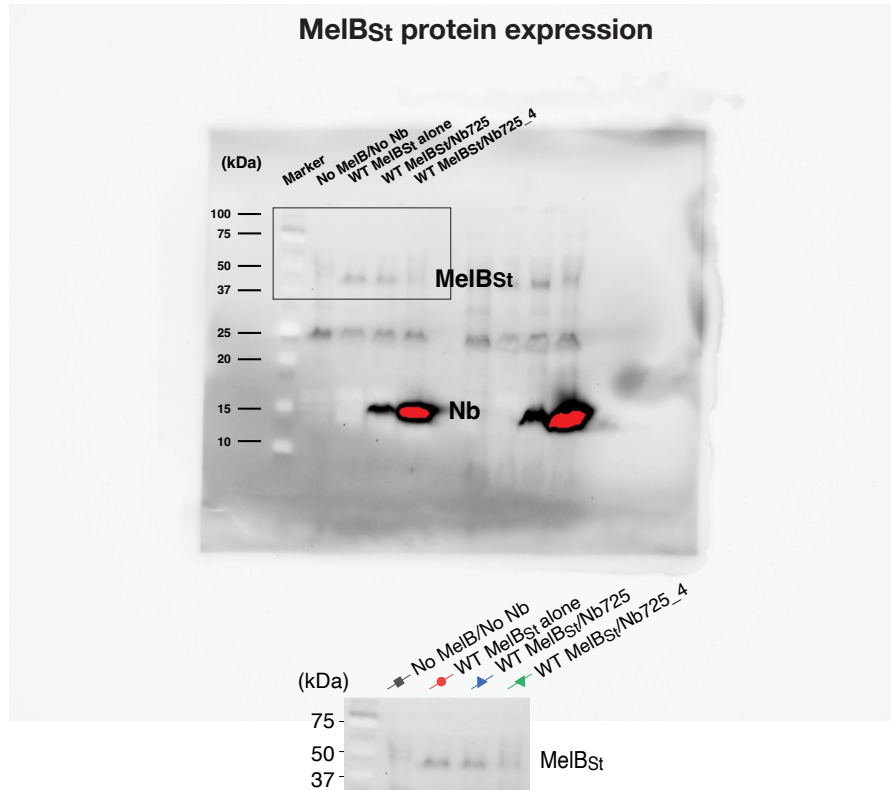


Figure 1 – source data 4. Western blot to detect MelB_{St} expression when co-expressing with Nb725 or Nb725_4. Membranes were prepared from *E. coli* DW2 cells that were transformed with two compatible plasmids derived from pACYC and pCS19 encoding MelB_{St} and Nb725_4 or Nb725, respectively, and used for the [³H]melibiose active transport assay. After protein concentration determination, 50 µg of total membrane proteins of each sample was analyzed by SDS-15%PAGE and western blot using anti-His tag antibody (HisProbe™-HRP Conjugate) as described in Methods. The western blot result was imaged by the ChemiDoc MP Imaging System (Bio-Rad). MelB_{St} protein expression presented as the inset in figure 1c was highlighted by the box. The bands migrating near 25 kDa are non-specific and also presented in the membranes with no MelB nor Nb.