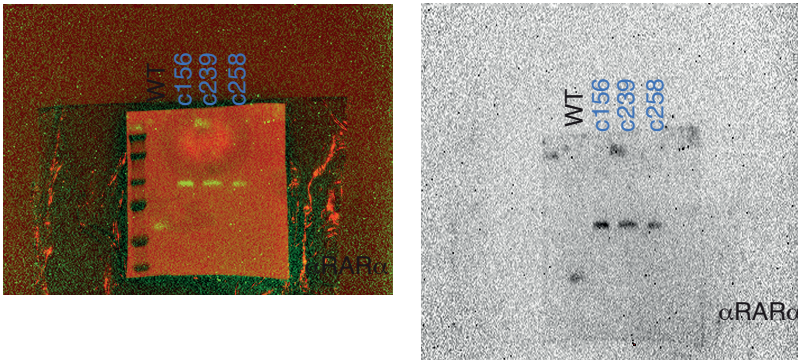
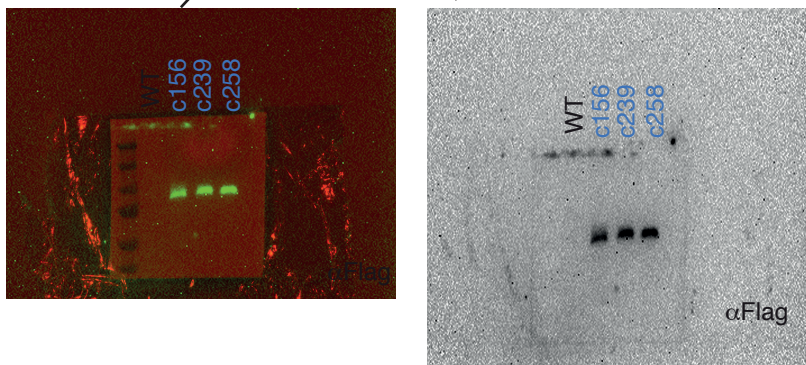


Left is multi-channel blot image of the same gel on the right blotted with the same antibody.



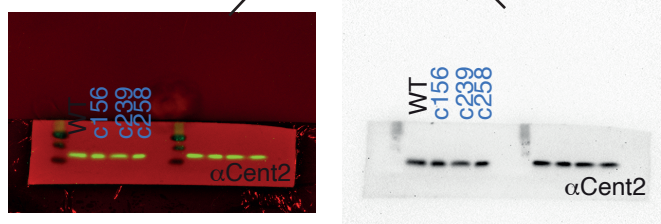
Original uncropped image for anti-RAR $\alpha$  blotted signal for RAR $\alpha$  endo clones.

Left is multi-channel blot image of the same gel on the right blotted with the same antibody.



Original uncropped image for anti-Flag blotted signal for RAR $\alpha$  endo clones.

Left is multi-channel blot image of the same gel on the right blotted with anti-Centrin-2 loading control antibody.



Original uncropped image for anti-Cent2 blotted signal for the single membrane that was cut to blot for anti-RAR $\alpha$  and anti-Flag antibodies.