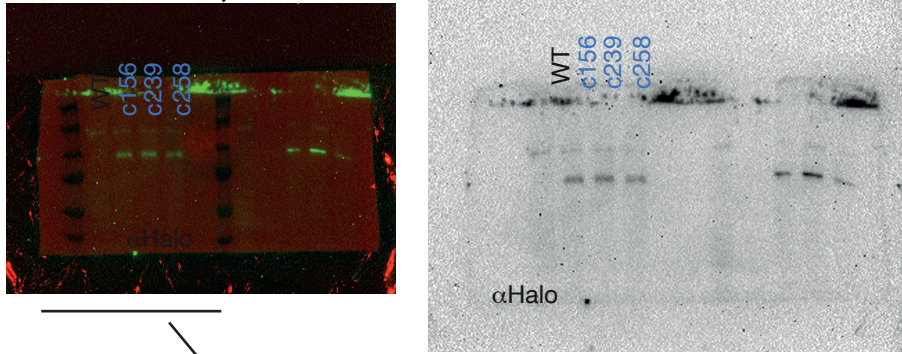
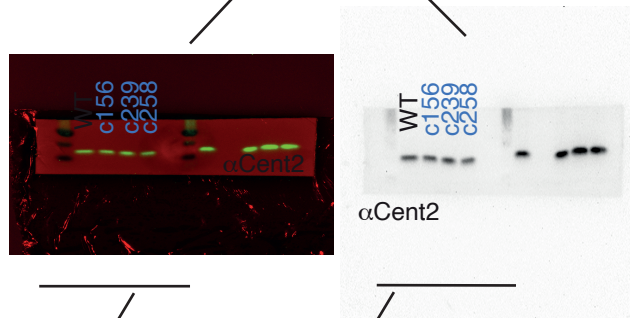


Left is multi-channel blot image of the same gel on the right blotted with the same antibody. Only the left side of the gel is relevant here.



Original uncropped image for anti-Halo blotted signal for RAR α endo clones.

Left is multi-channel blot image of the same gel on the right blotted with anti-Centrin-2 loading control antibody. Only the left side of the gel is relevant here.



Original uncropped image for anti-Cent2 blotted signal for the single membrane that was cut to blot for anti-Halo antibody.