

STAT3-Ser727

Labelling:

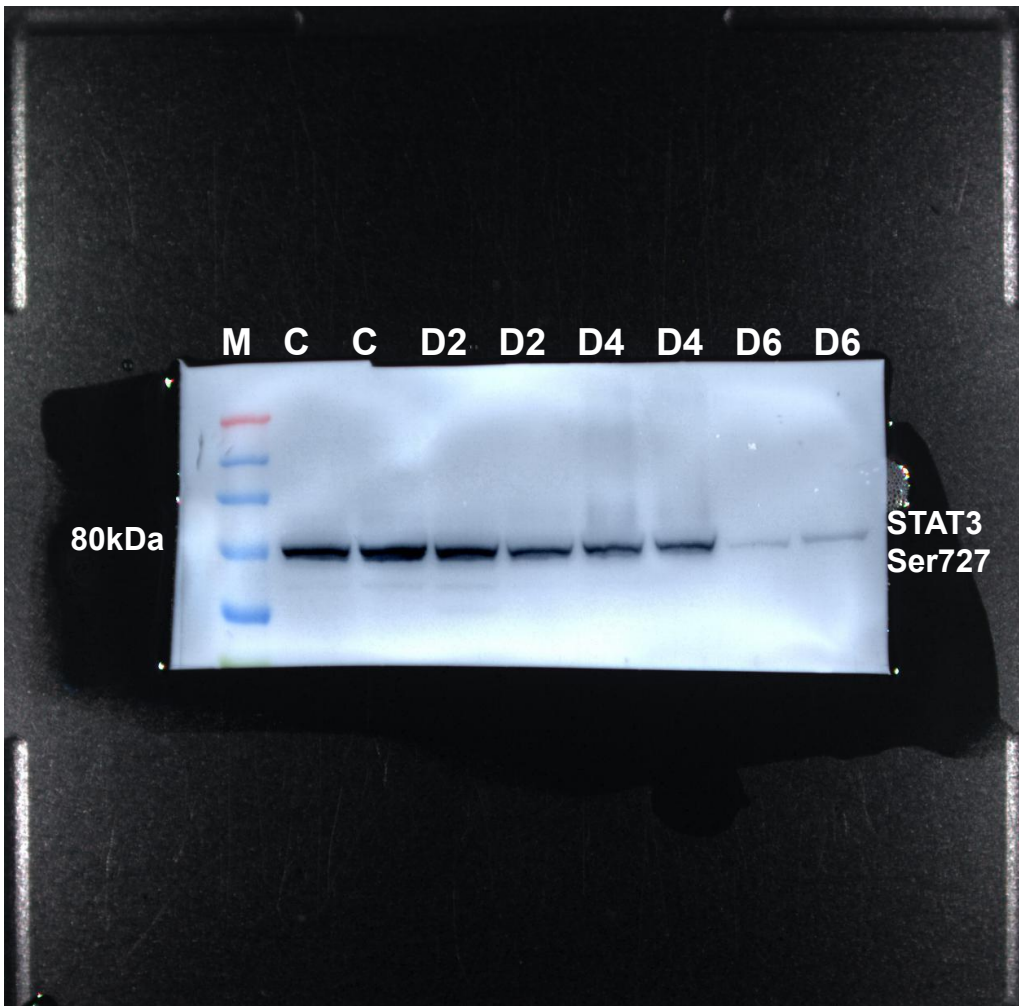
M - Protein ladder

C - wild type animals without any treatment

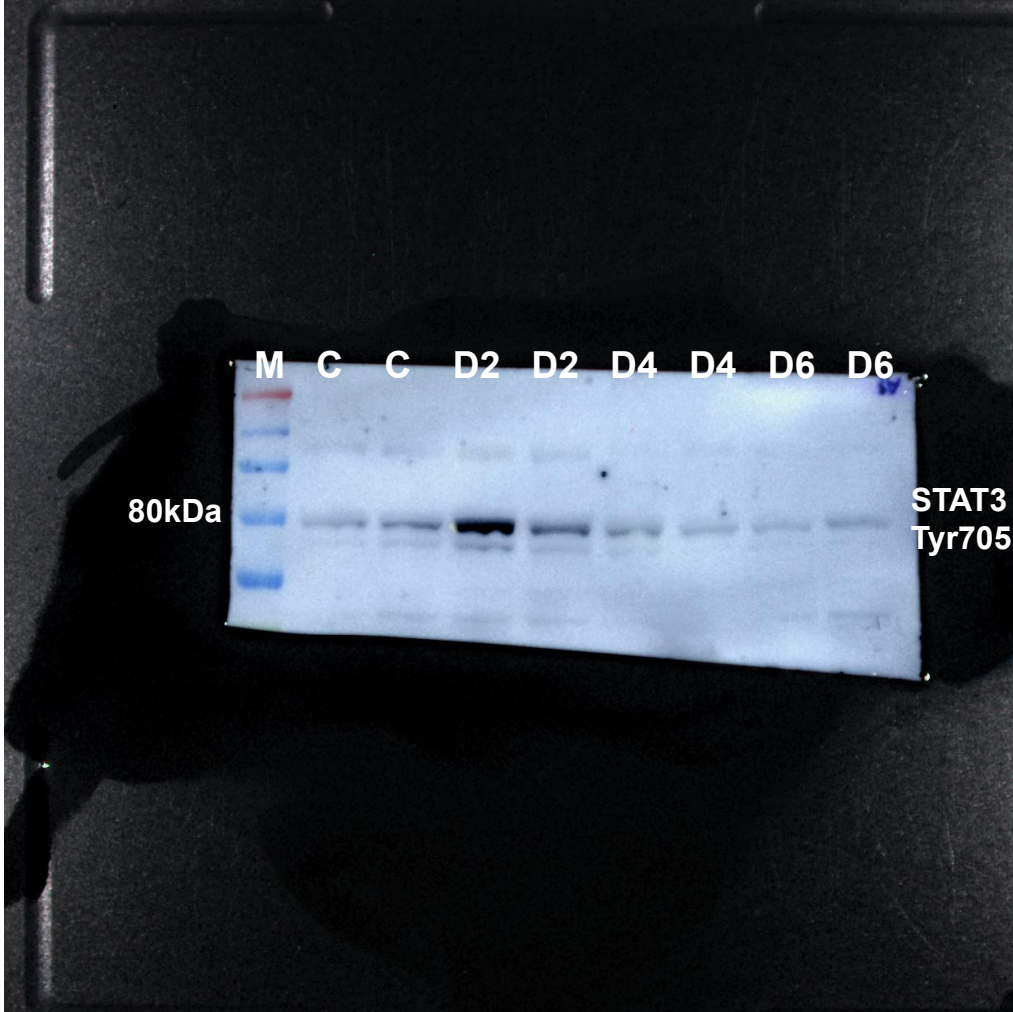
D2 - wildtype animals with DSS treatment for 2 days.

D4 - wildtype animals with DSS treatment for 4 days.

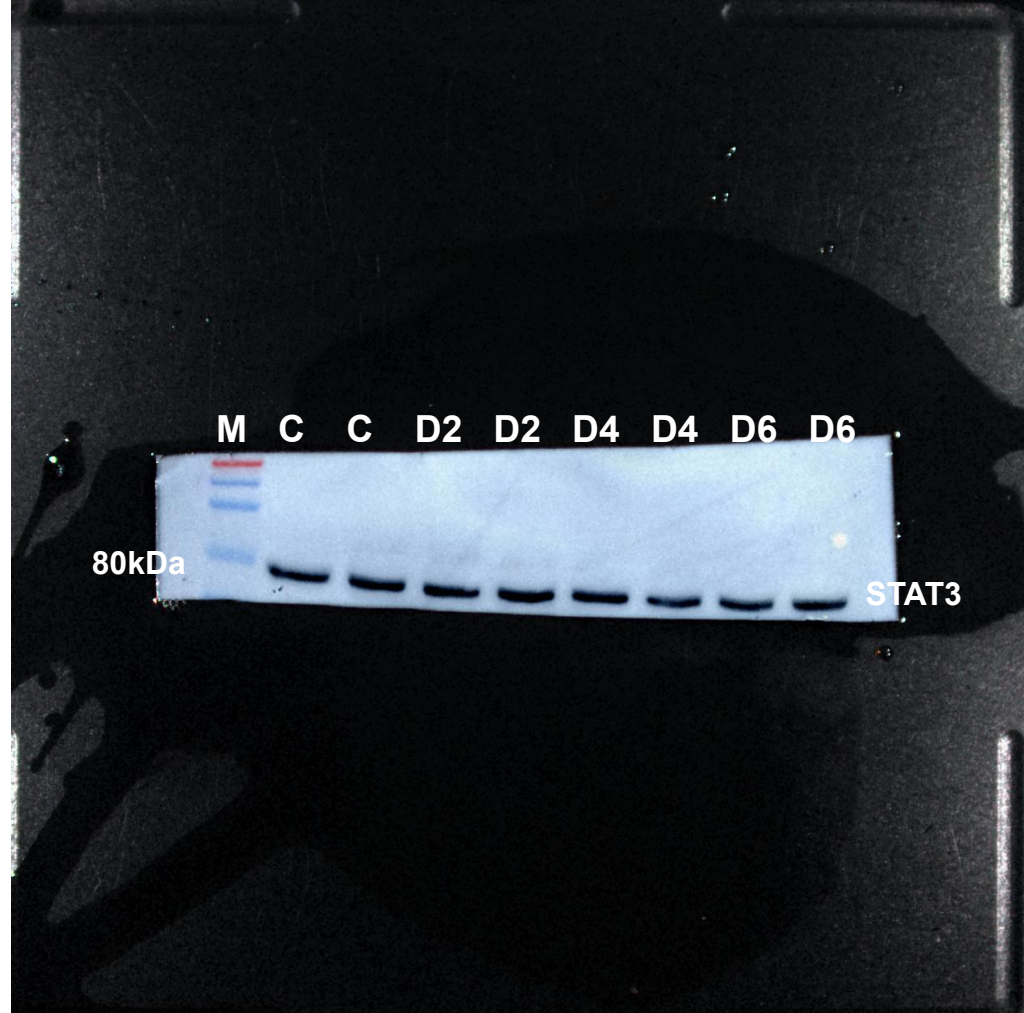
D6 - wildtype animals with DSS treatment for 6 days.



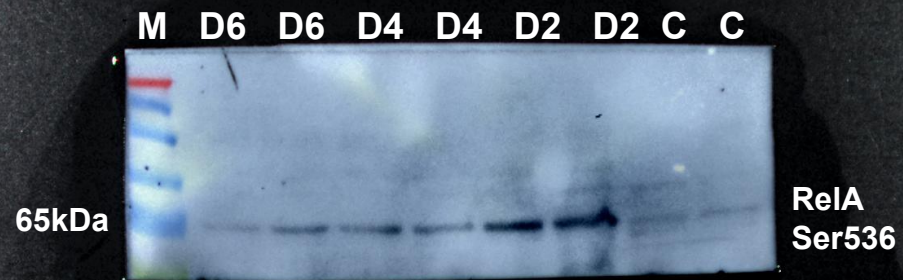
STAT3-Tyr705



Total STAT3



RelA-Ser536



Total RelA



Beta actin

