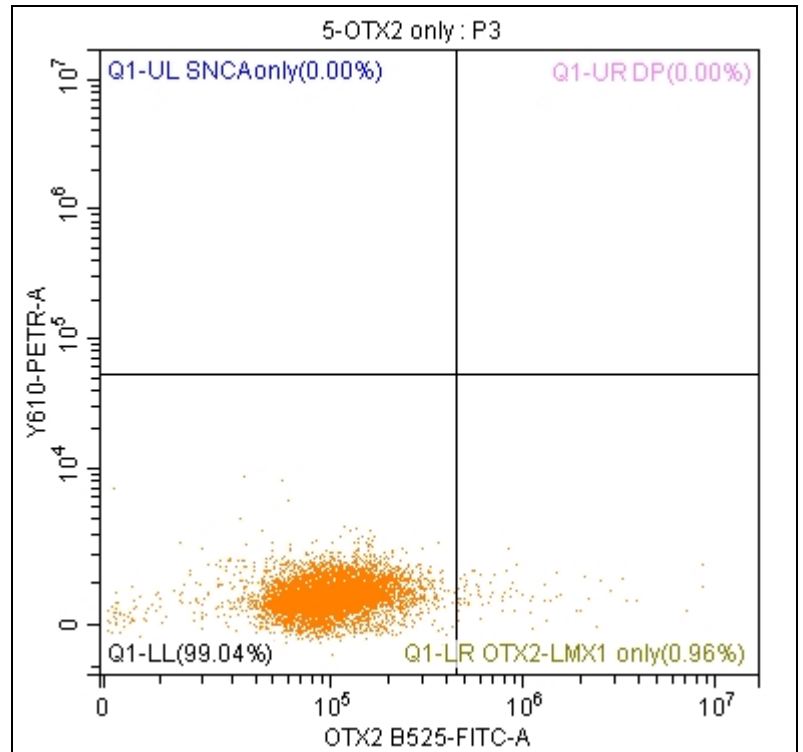
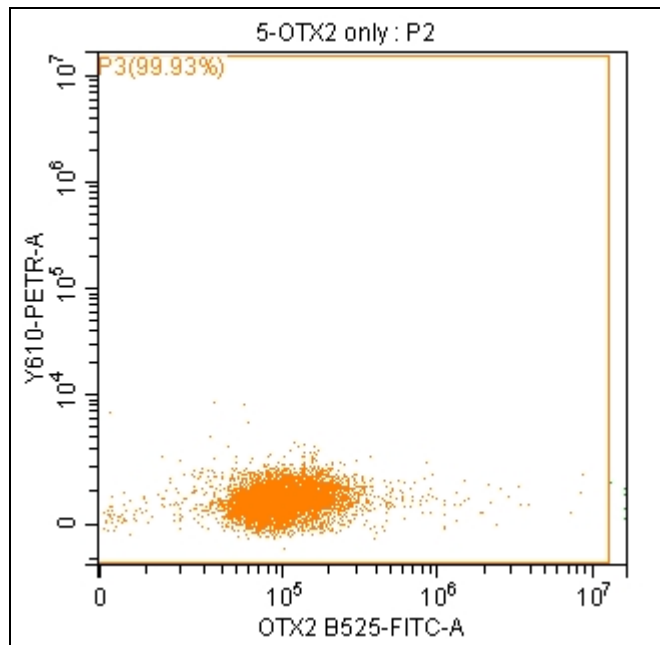
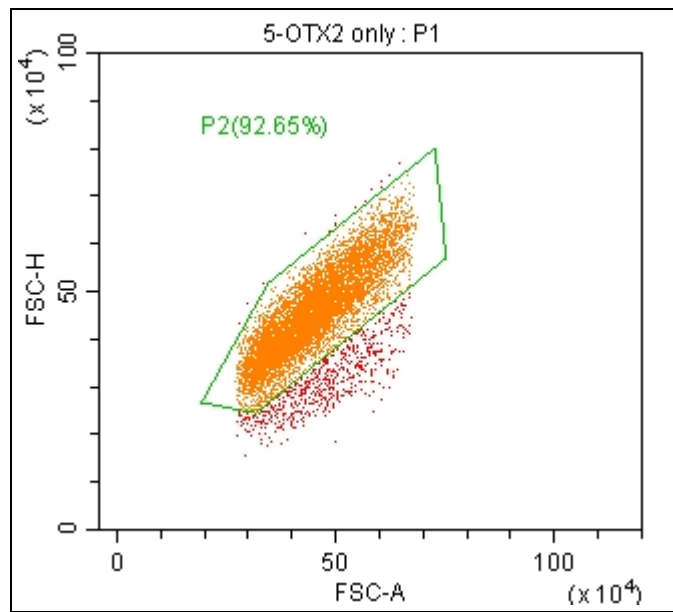
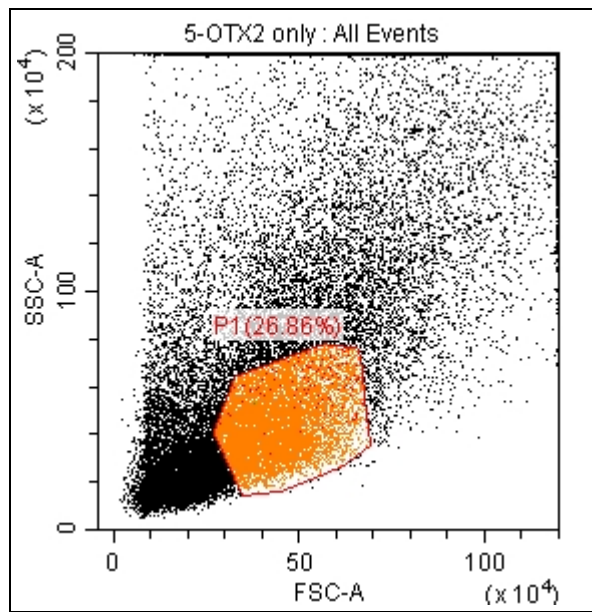


Tube Name: 3-AF488 AF594 2nd only2

Sample ID:

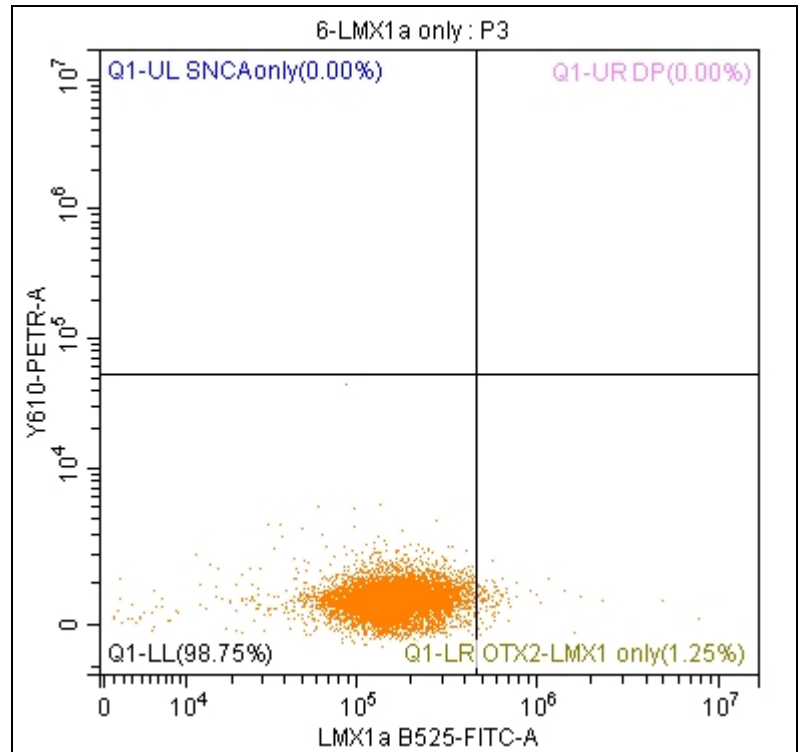
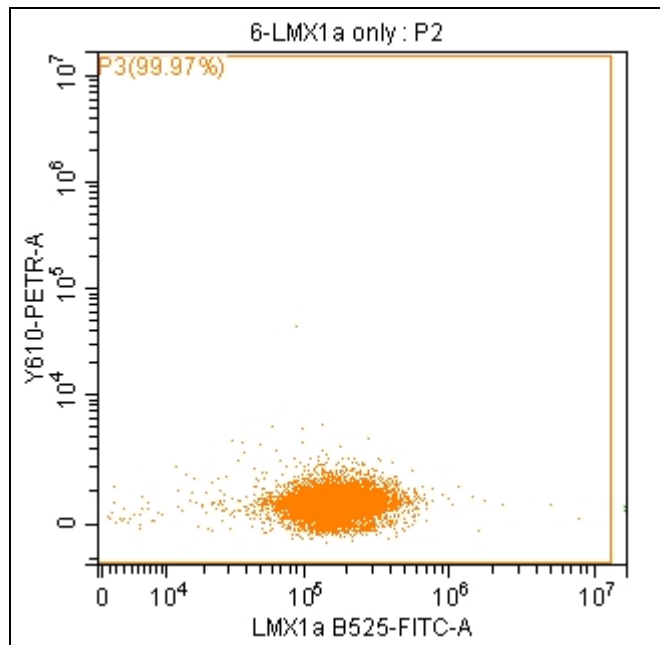
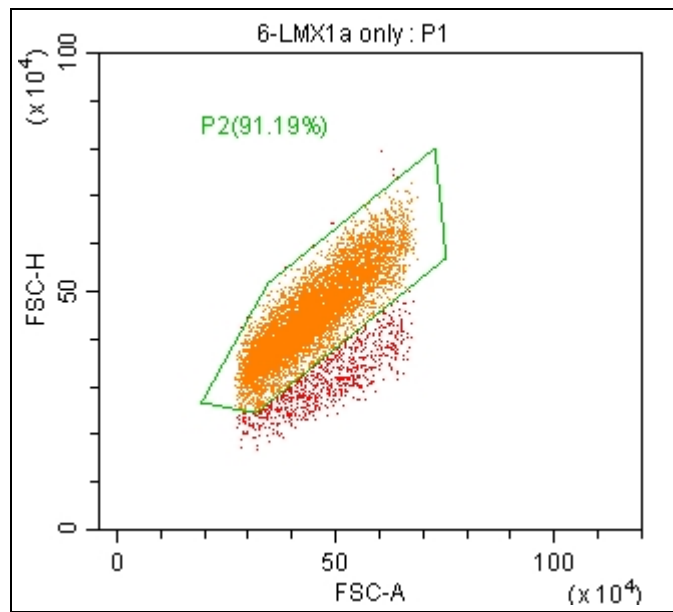
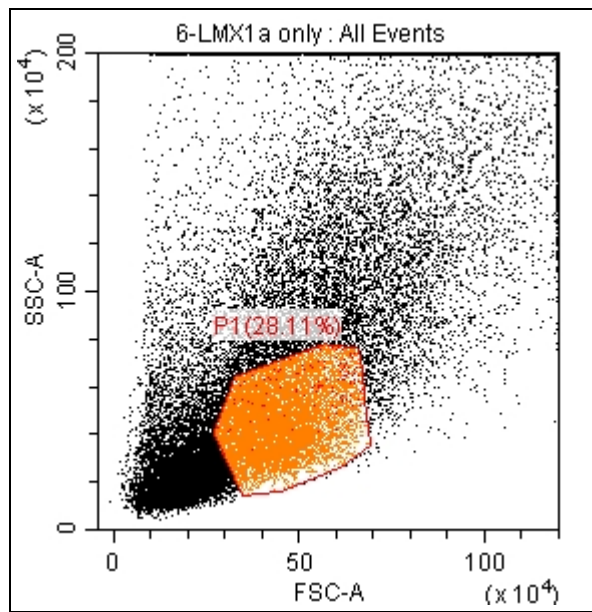
Population	Events	% Total	% Parent
▼ All Events	10000	100.00%	100.00%
▼ P1	2613	26.13%	26.13%
▼ P2	2443	24.43%	93.49%
▼ P3	2440	24.40%	99.88%
Q1-UR DP	0	0.00%	0.00%
Q1-UL SNCA only	9	0.09%	0.37%
Q1-LL	2431	24.31%	99.63%
Q1-LR OTX2-LMX1 only	0	0.00%	0.00%



Tube Name: 5-OTX2 only

Sample ID:

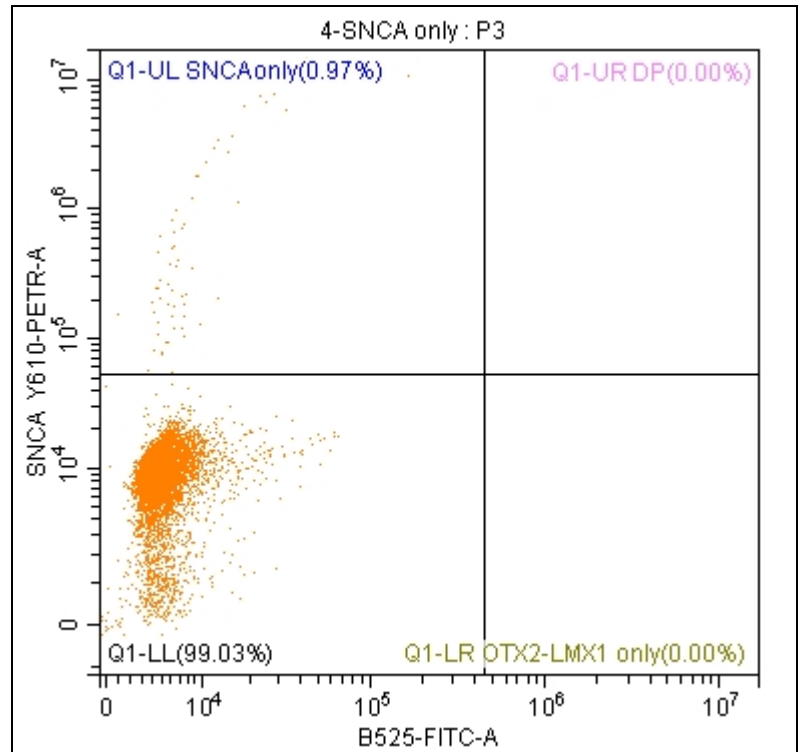
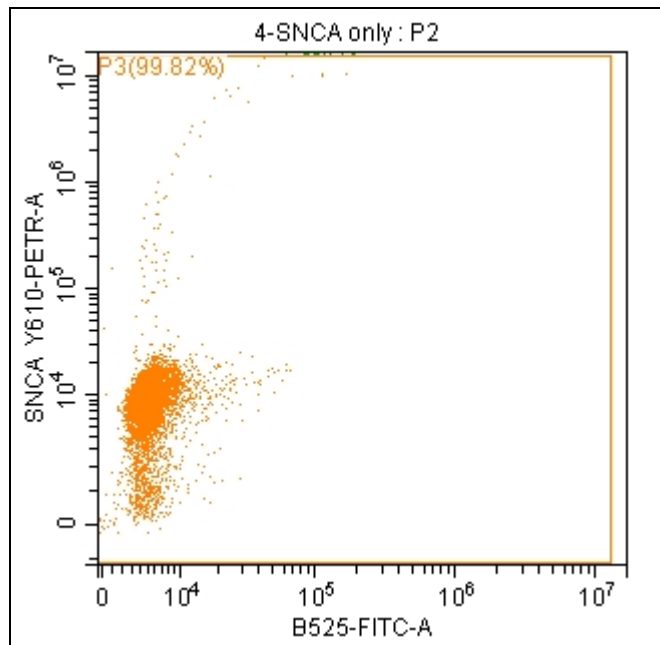
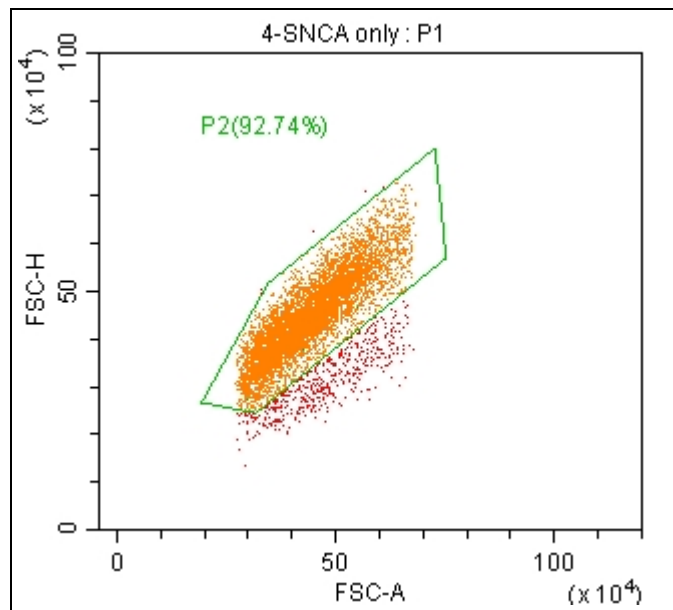
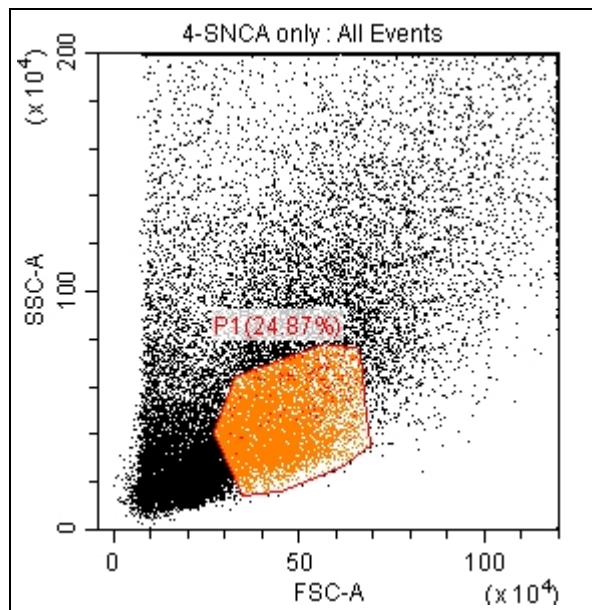
Population	Events	% Total	% Parent
▼ ● All Events	30000	100.00%	100.00%
▼ ● P1	8059	26.86%	26.86%
▼ ● P2	7467	24.89%	92.65%
▼ ● P3	7462	24.87%	99.93%
● Q1-UR DP	0	0.00%	0.00%
● Q1-UL SNCA only	0	0.00%	0.00%
⊗ Q1-LL	7390	24.63%	99.04%
● Q1-LR OTX2-LMX1 only	72	0.24%	0.96%



Tube Name: 6-LMX1a only

Sample ID:

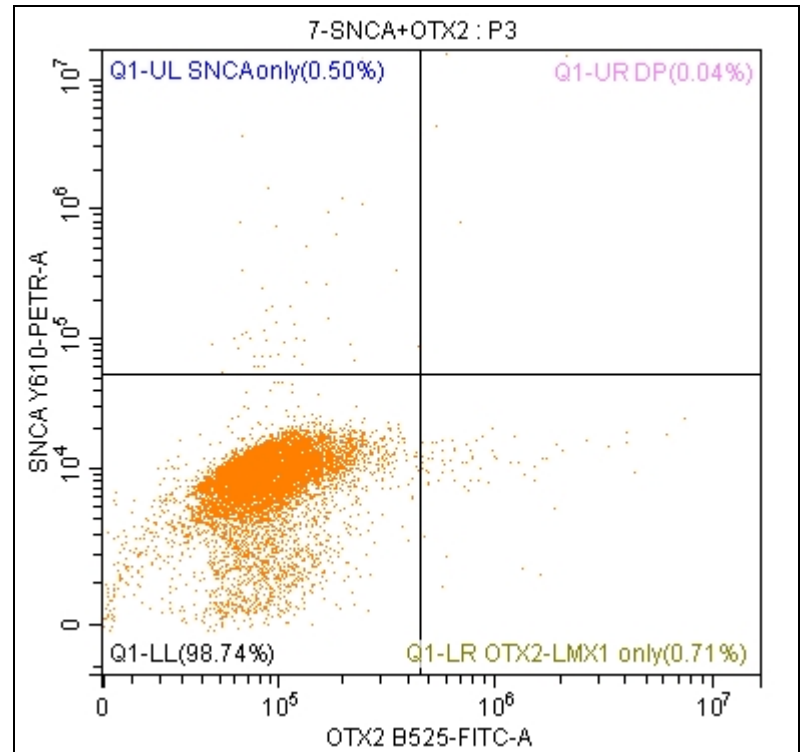
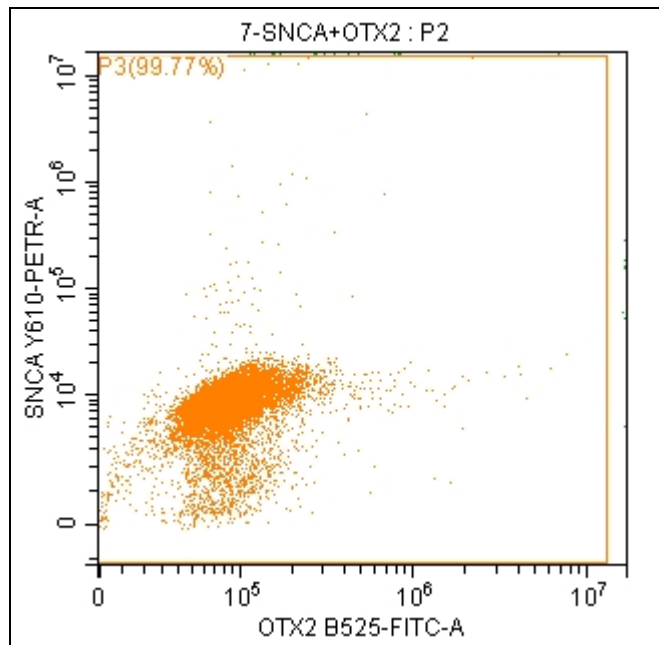
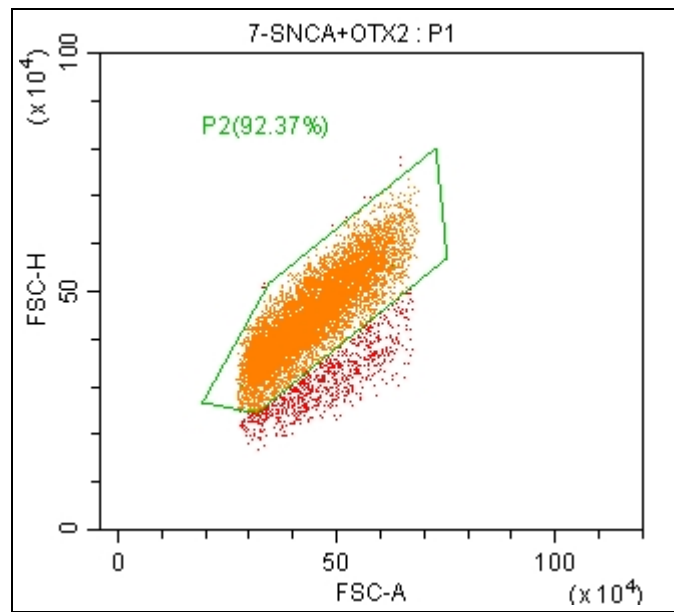
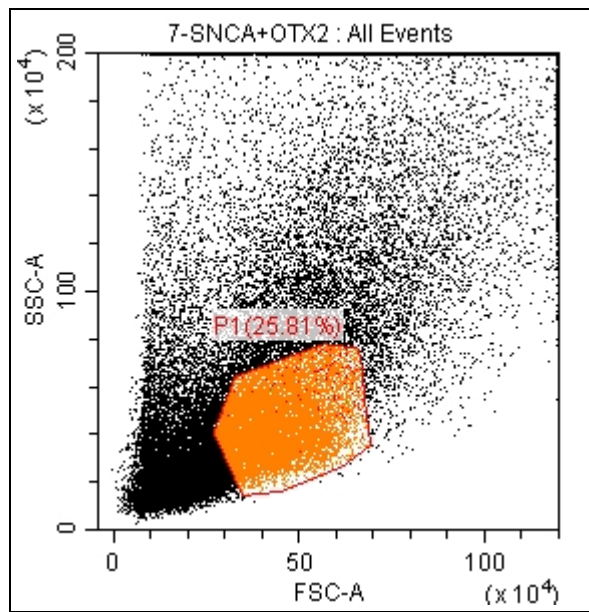
Population	Events	% Total	% Parent
▼ ● All Events	30000	100.00%	100.00%
▼ ● P1	8433	28.11%	28.11%
▼ ● P2	7690	25.63%	91.19%
▼ ● P3	7688	25.63%	99.97%
● Q1-UR DP	0	0.00%	0.00%
● Q1-UL SNCA only	0	0.00%	0.00%
⊗ Q1-LL	7592	25.31%	98.75%
● Q1-LR OTX2-LMX1 only	96	0.32%	1.25%



Tube Name: 4-SNCA only

Sample ID:

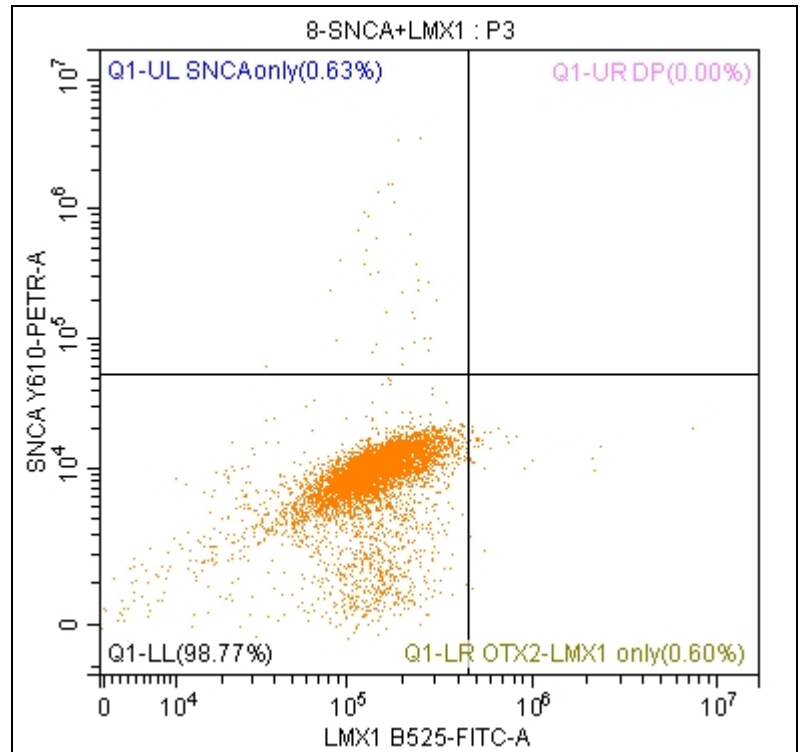
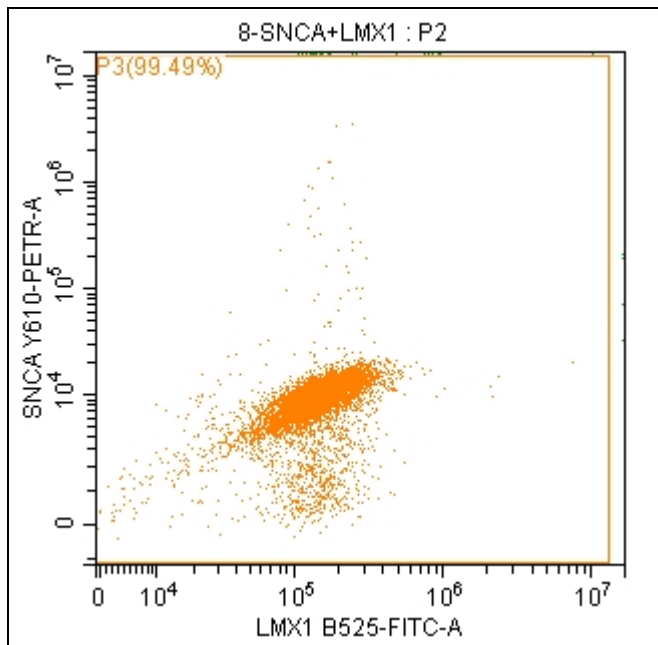
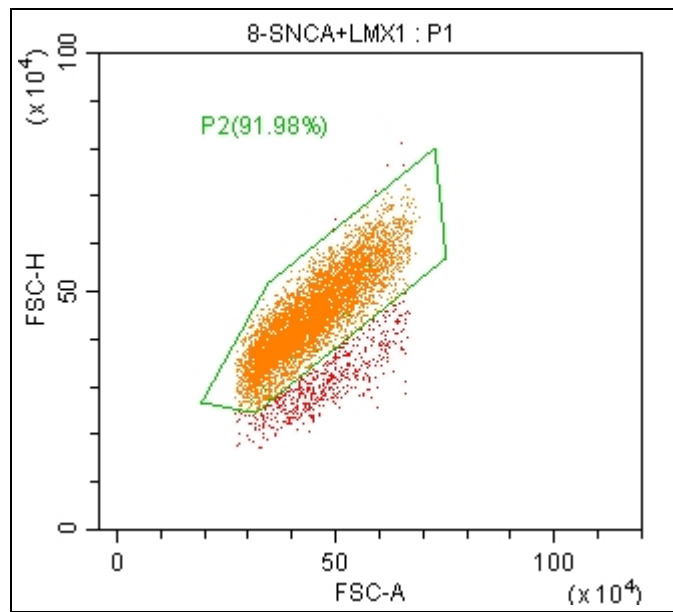
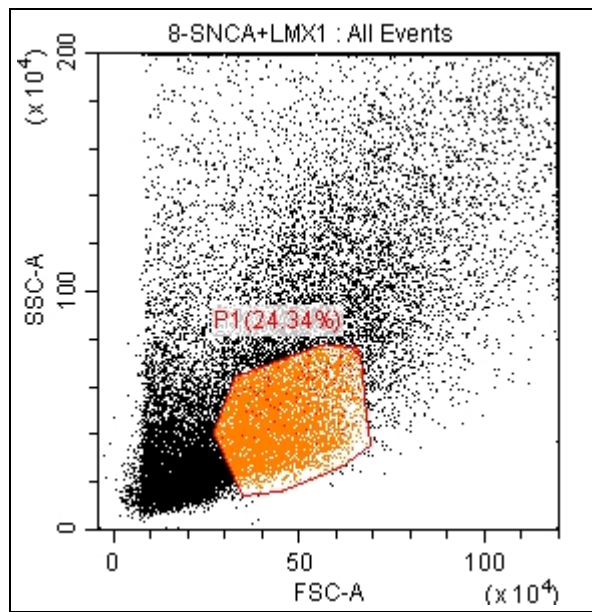
Population	Events	% Total	% Parent
▼ ● All Events	28140	100.00%	100.00%
▼ ● P1	6998	24.87%	24.87%
▼ ● P2	6490	23.06%	92.74%
▼ ● P3	6478	23.02%	99.82%
● Q1-UR DP	0	0.00%	0.00%
● Q1-UL SNCA only	63	0.22%	0.97%
⊗ Q1-LL	6415	22.80%	99.03%
● Q1-LR OTX2-LMX1 only	0	0.00%	0.00%



Tube Name: 7-SNCA+OTX2

Sample ID:

Population	Events	% Total	% Parent
▼ All Events	40000	100.00%	100.00%
▼ P1	10325	25.81%	25.81%
▼ P2	9537	23.84%	92.37%
▼ P3	9515	23.79%	99.77%
Q1-UR DP	4	0.01%	0.04%
Q1-UL SNCA only	48	0.12%	0.50%
Q1-LL	9395	23.49%	98.74%
Q1-LR OTX2-LMX1 only	68	0.17%	0.71%



Tube Name: 8-SNCA+LMX1

Sample ID:

Population	Events	% Total	% Parent
▼ ● All Events	26328	100.00%	100.00%
▼ ● P1	6408	24.34%	24.34%
▼ ● P2	5894	22.39%	91.98%
▼ ● P3	5864	22.27%	99.49%
● Q1-UR DP	0	0.00%	0.00%
● Q1-UL SNCA only	37	0.14%	0.63%
⊗ Q1-LL	5792	22.00%	98.77%
● Q1-LR OTX2-LMX1 only	35	0.13%	0.60%