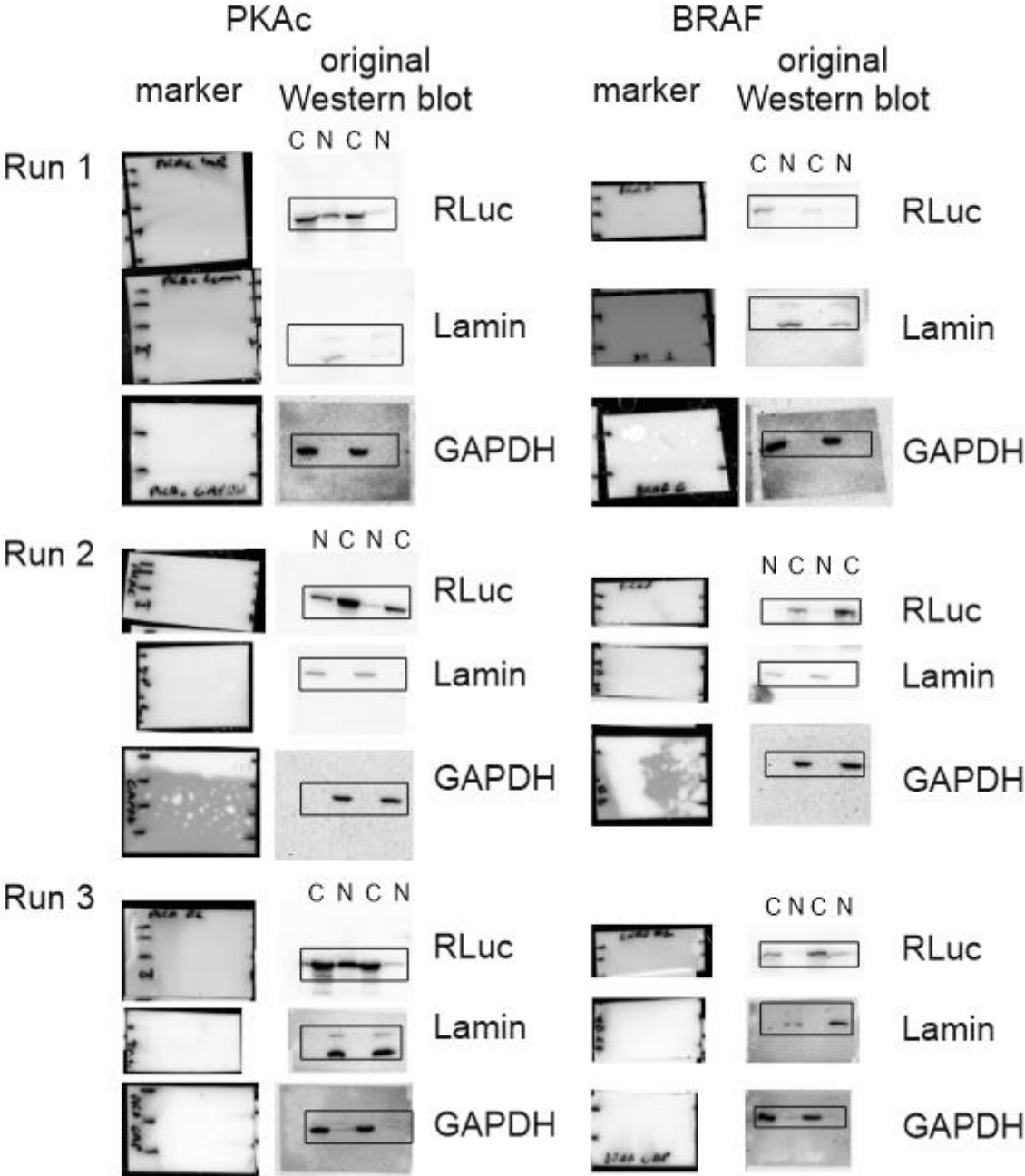


Indicated antibodies have been used (for details see the Materials and Methods section)

Figure 5 – Figure Supplement 1 panel A:

Subcellular localization of PKAc and BRAF KinCon reporters.

N stands for nucleus and C stands for cytoplasm.

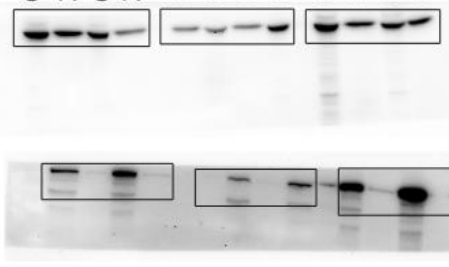


marker



original
Western blot

Run 1 Run 2 Run 3
C N C N N C N C C N C N



PKAc
endogenous

BRAF
endogenous