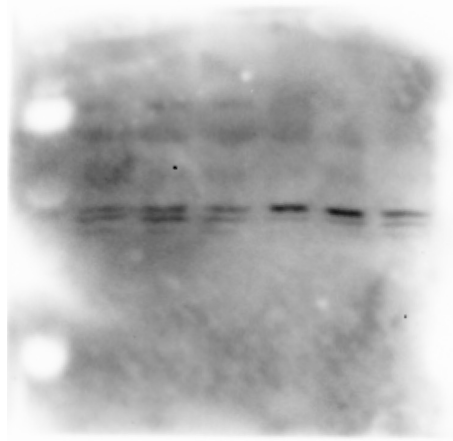


**Fig6D**

GLUT4

$\alpha/\beta$ -TUBLIN

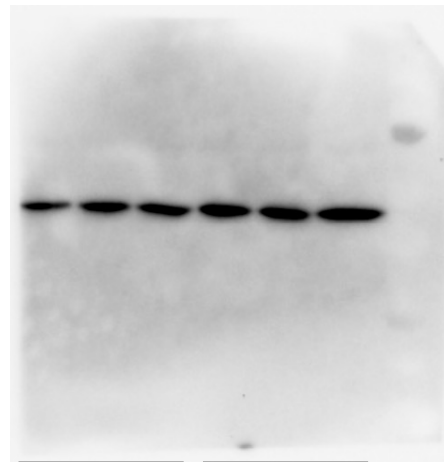
50 kDa ▷



Ctrl

Testo

55 kDa ▷



Ctrl

Testo

**Figure 6—source data 2.** PDF file containing original western blots for Figure 6D, indicating the relevant bands and treatments. Western blot images of GLUT4 and  $\alpha/\beta$ -tubulin in three sets of seminal vesicle epithelial cells cultured with 100 ng/mL testosterone (Testo) or in vehicle (Ctrl) for 7 days.