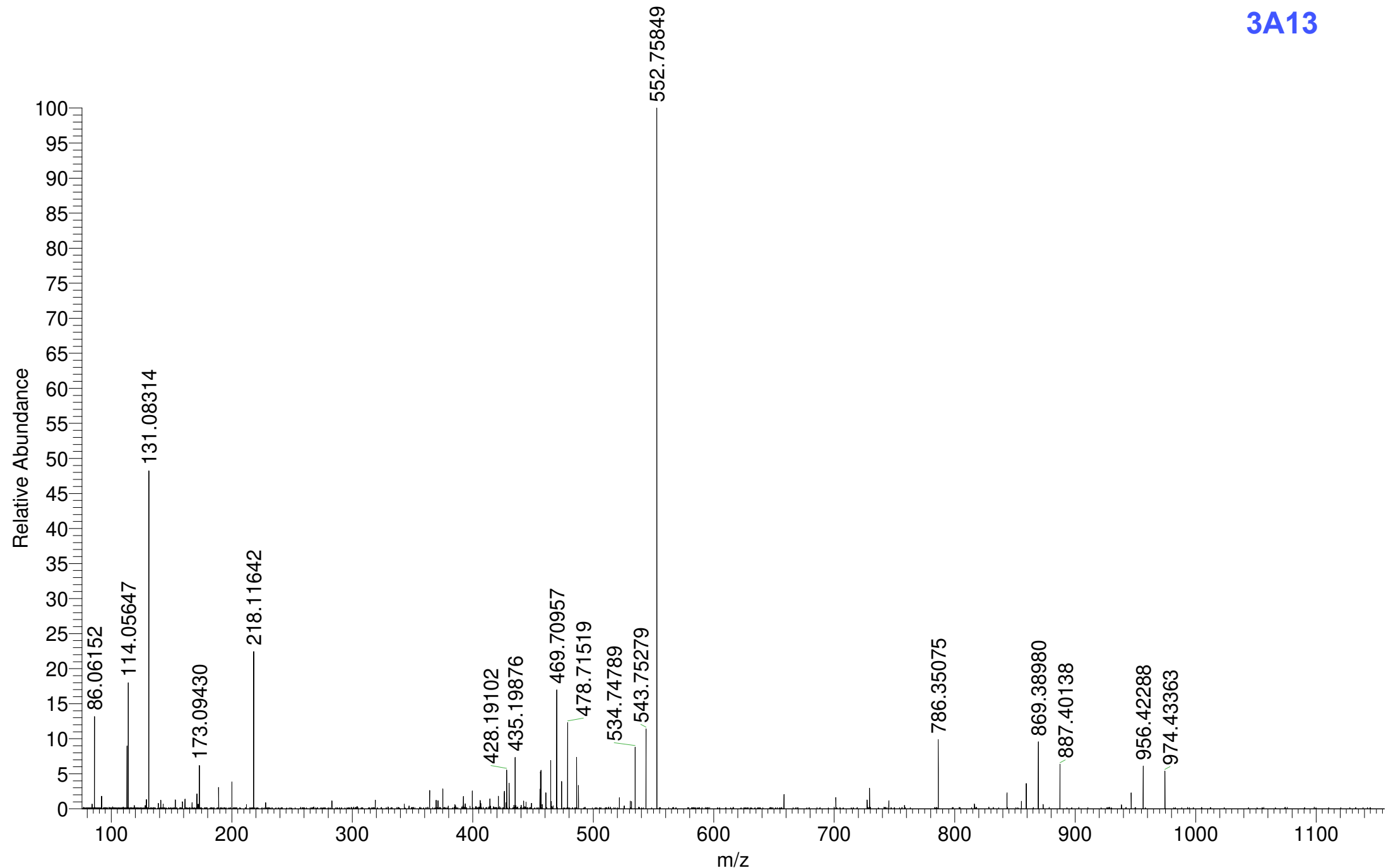
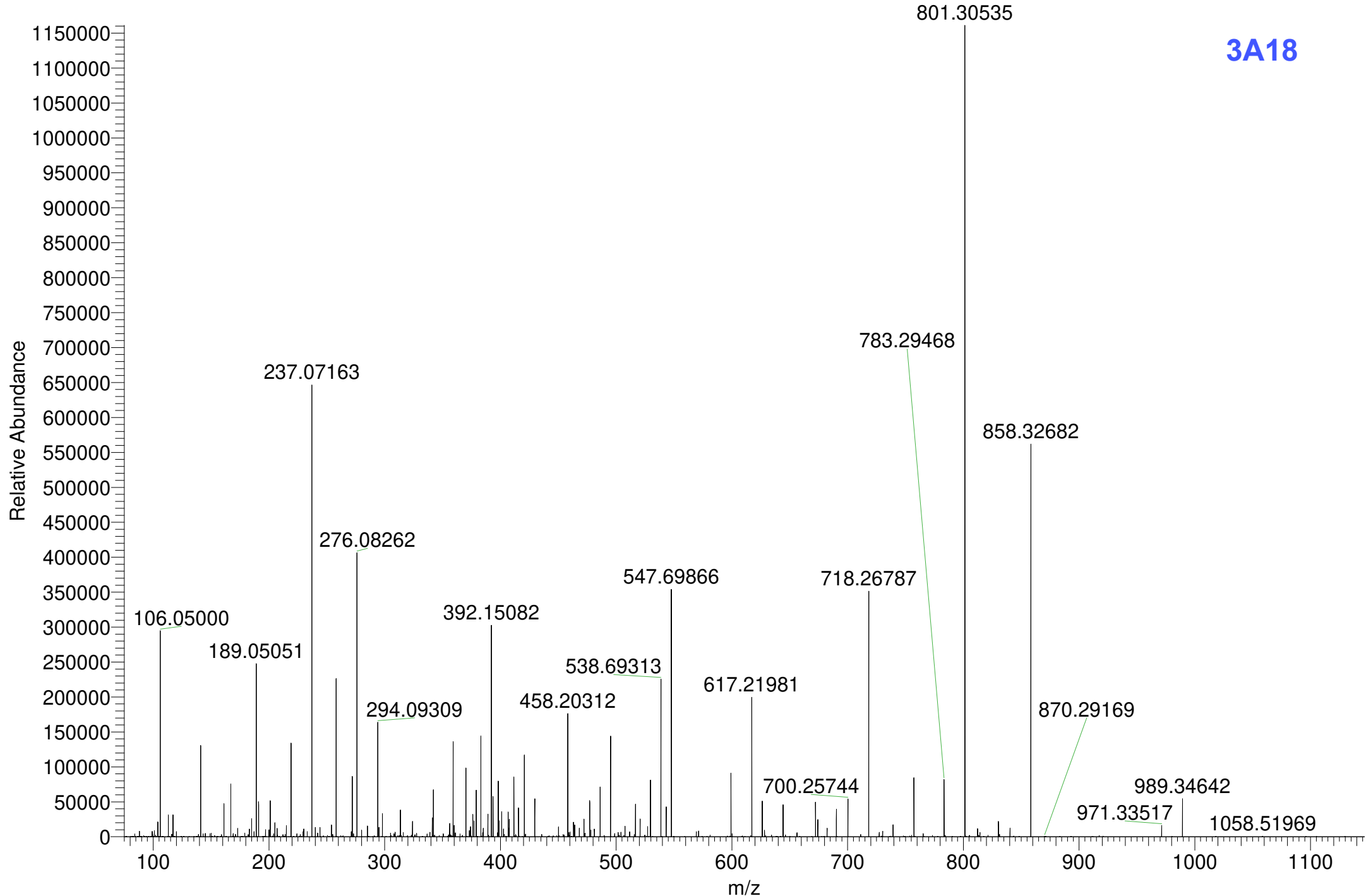


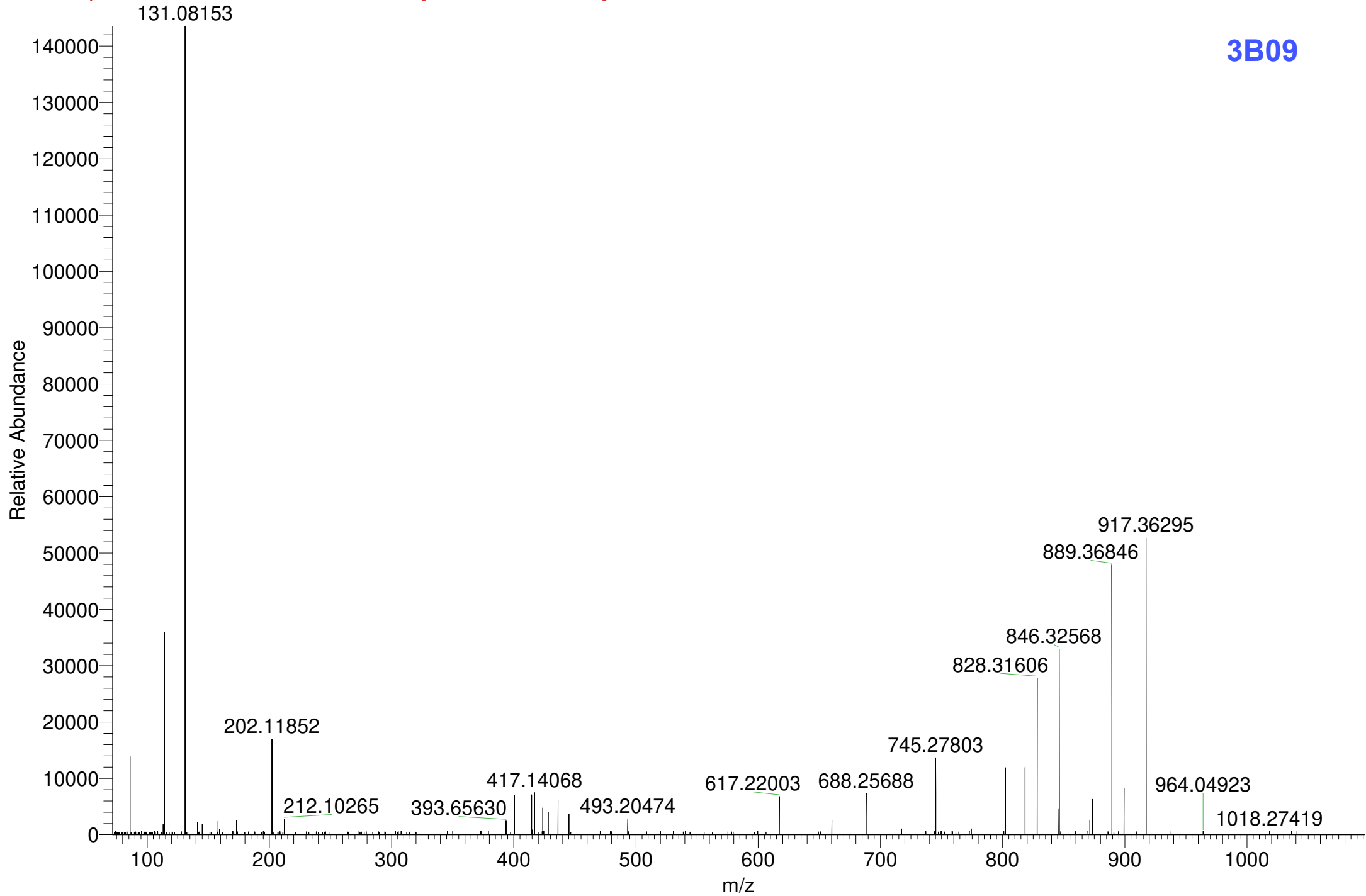
Pyoverdines analysed for the bioinformatic pipeline verification

Pyoverdine ID	MS / MS profiles available from	
	Rehm 2022 ABC https://doi.org/10.1007/s00216-022-03907-w	Gu 2024 eLife https://doi.org/10.7554/eLife.96719.1
3A06	3A06	x
3B19	3B19	x
3G07	3G07	x
s3b09	s3b09	x
s3c13	s3c13	x
s3e20	s3e20	x
3A13	x	3A13
3A18	x	3A18
3B09	x	3B09
3C06	x	3C06
3C14	x	3C14
3D03	x	3D03
3E13	x	3E13
s3a07	x	s3a07
s3a19	x	s3a19
s3b02	x	s3b02
s3d06	x	s3d06
s3e01	x	s3e01
s3e11	x	s3e11
s3e15	x	s3e15

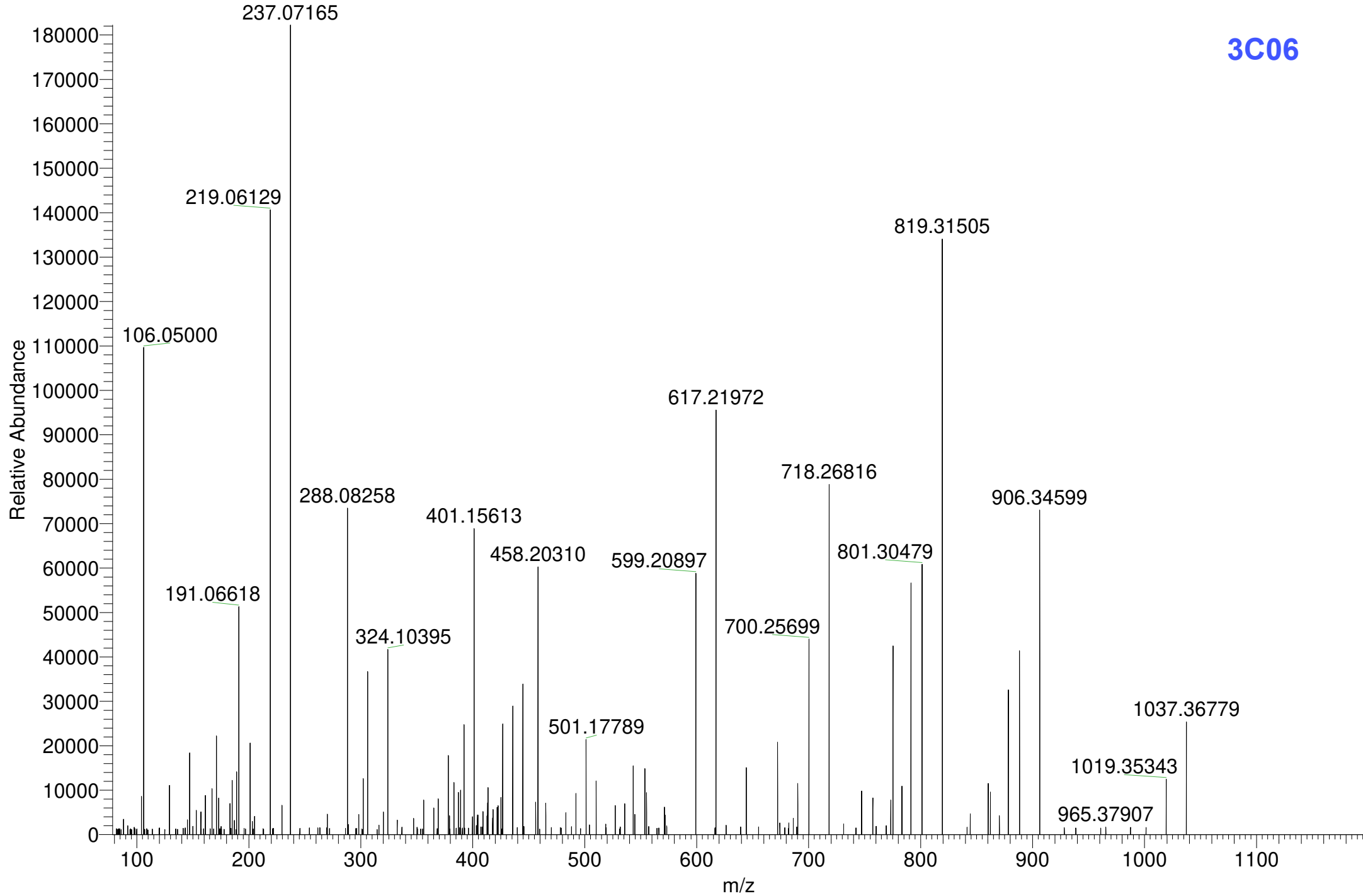




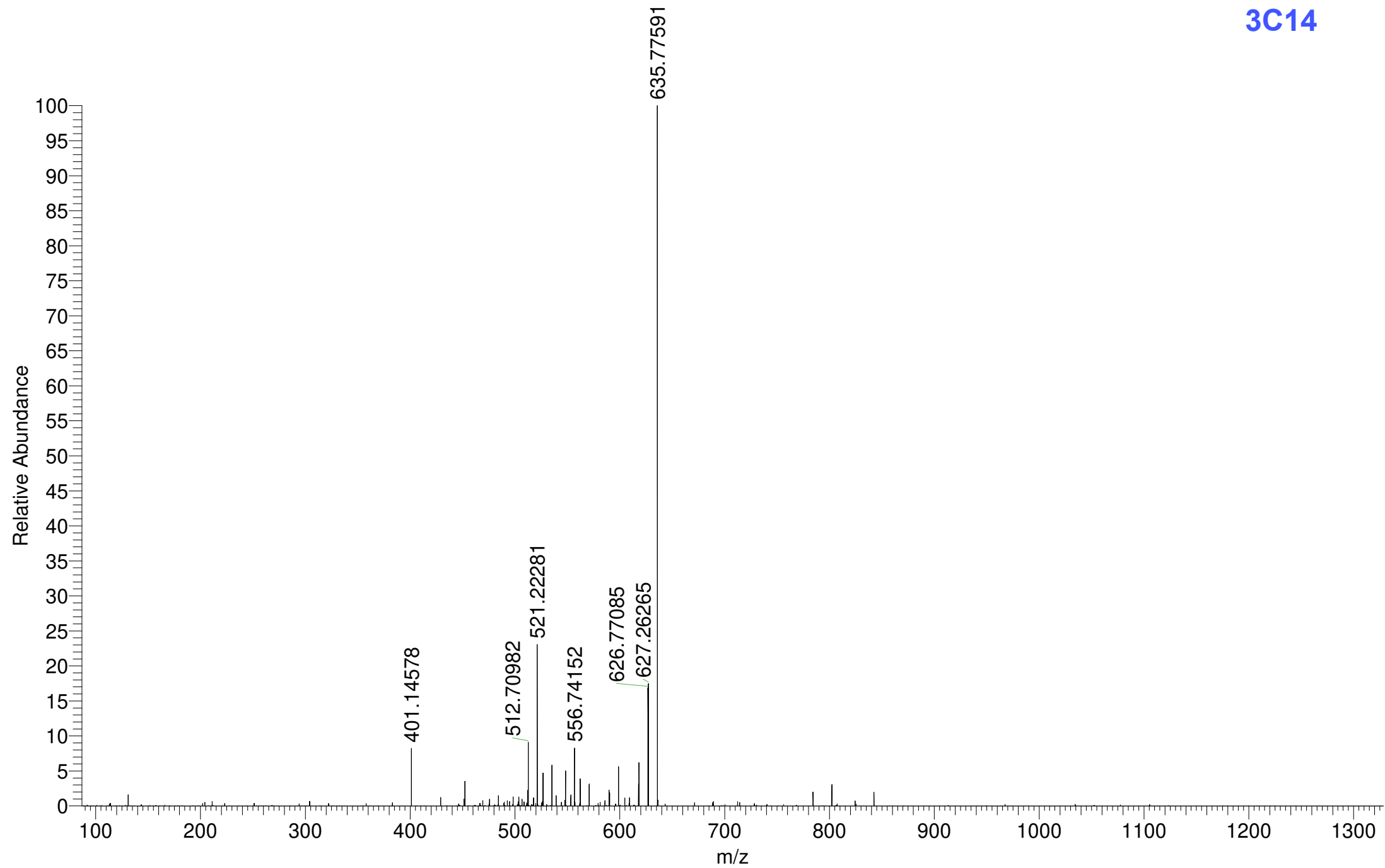
3B09



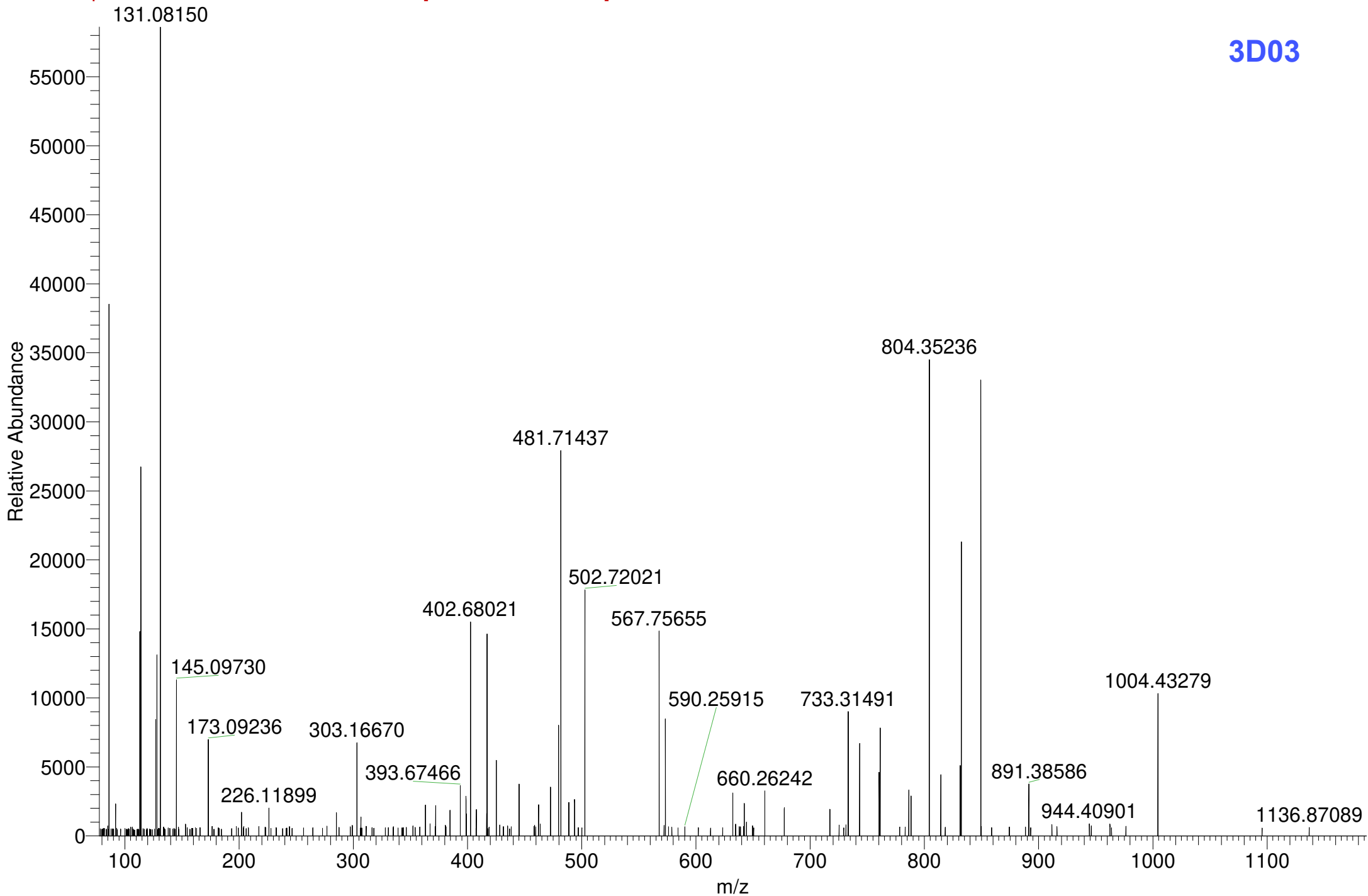
3C06



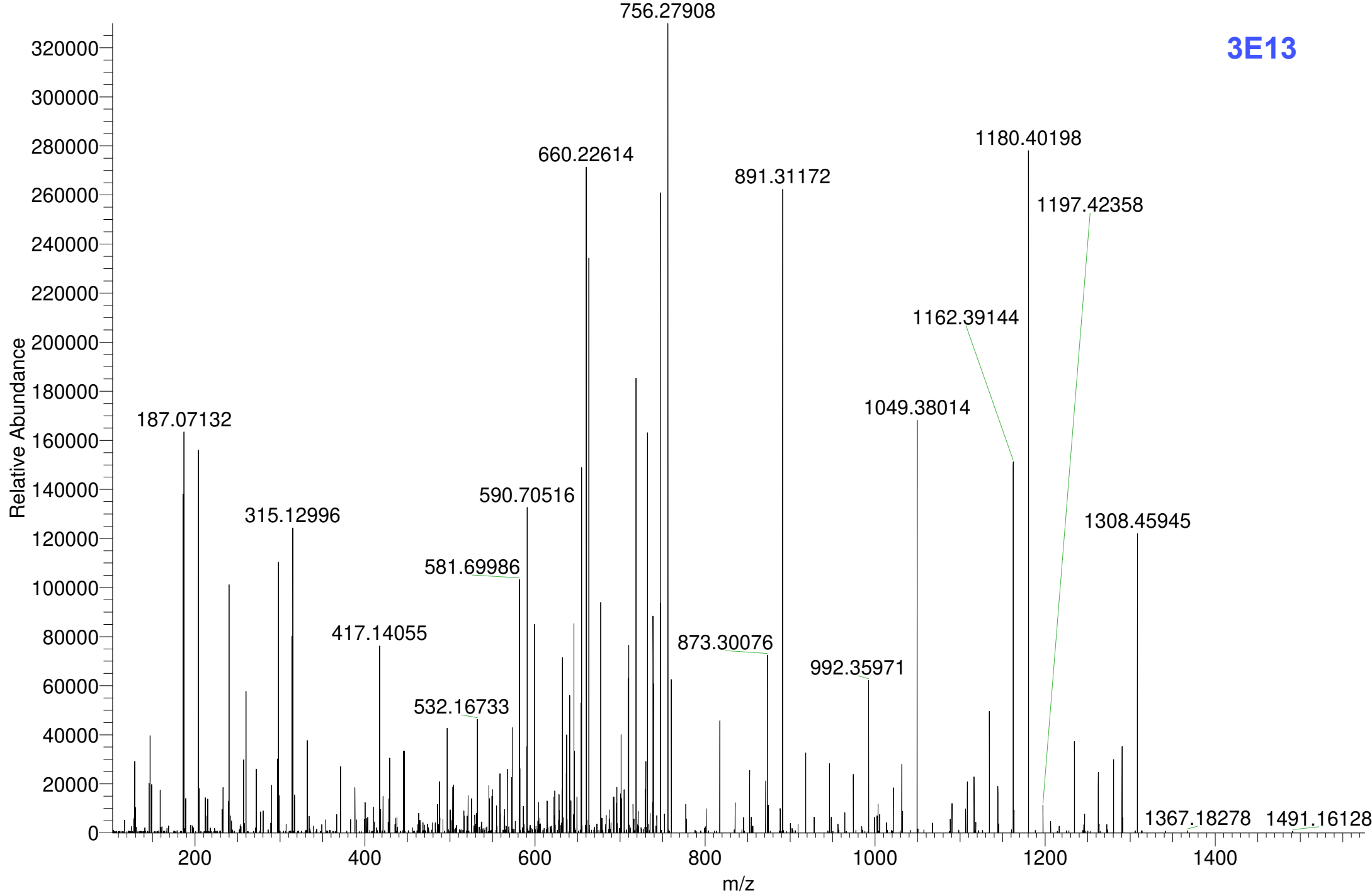
3C14



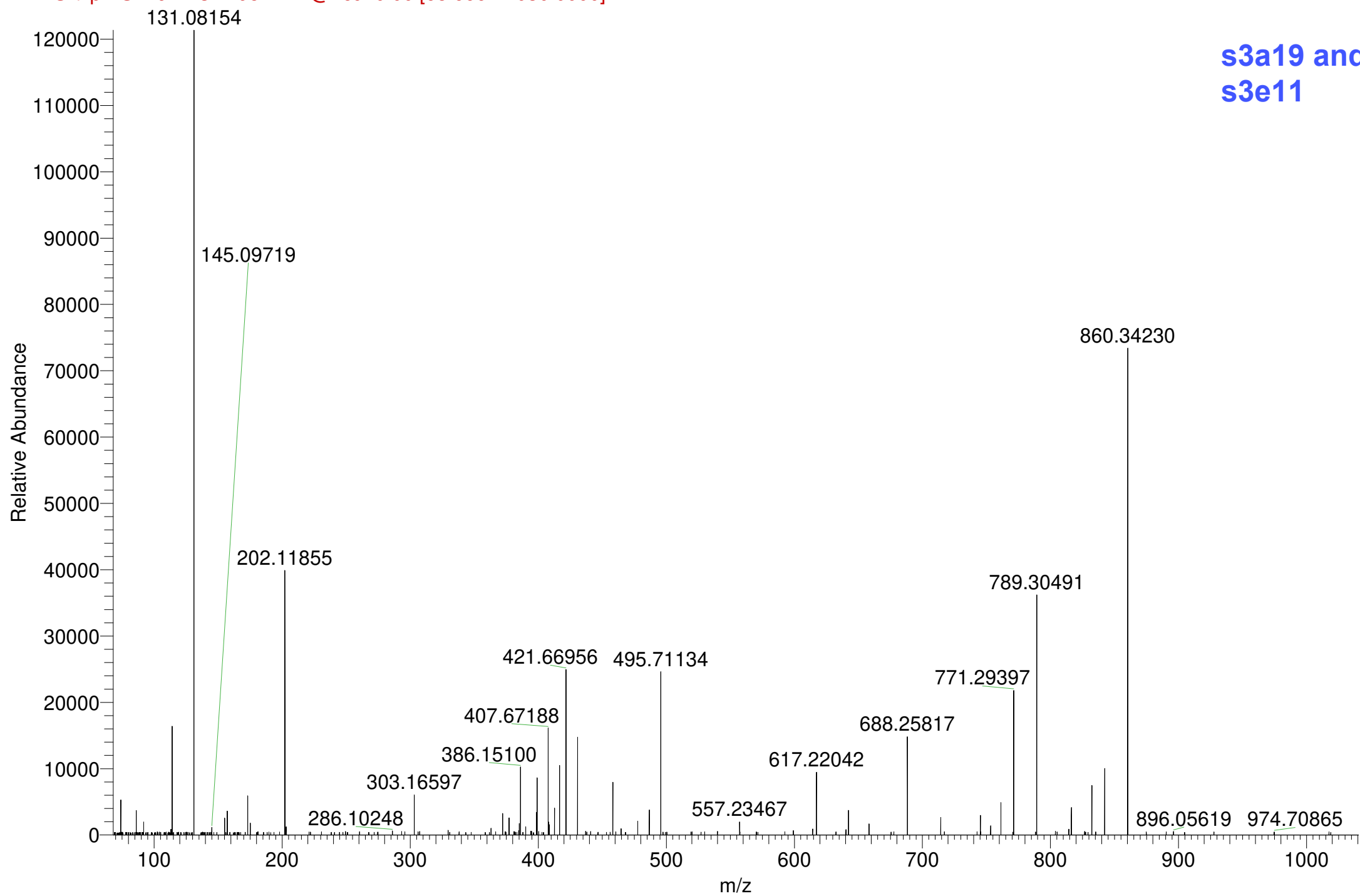
3D03



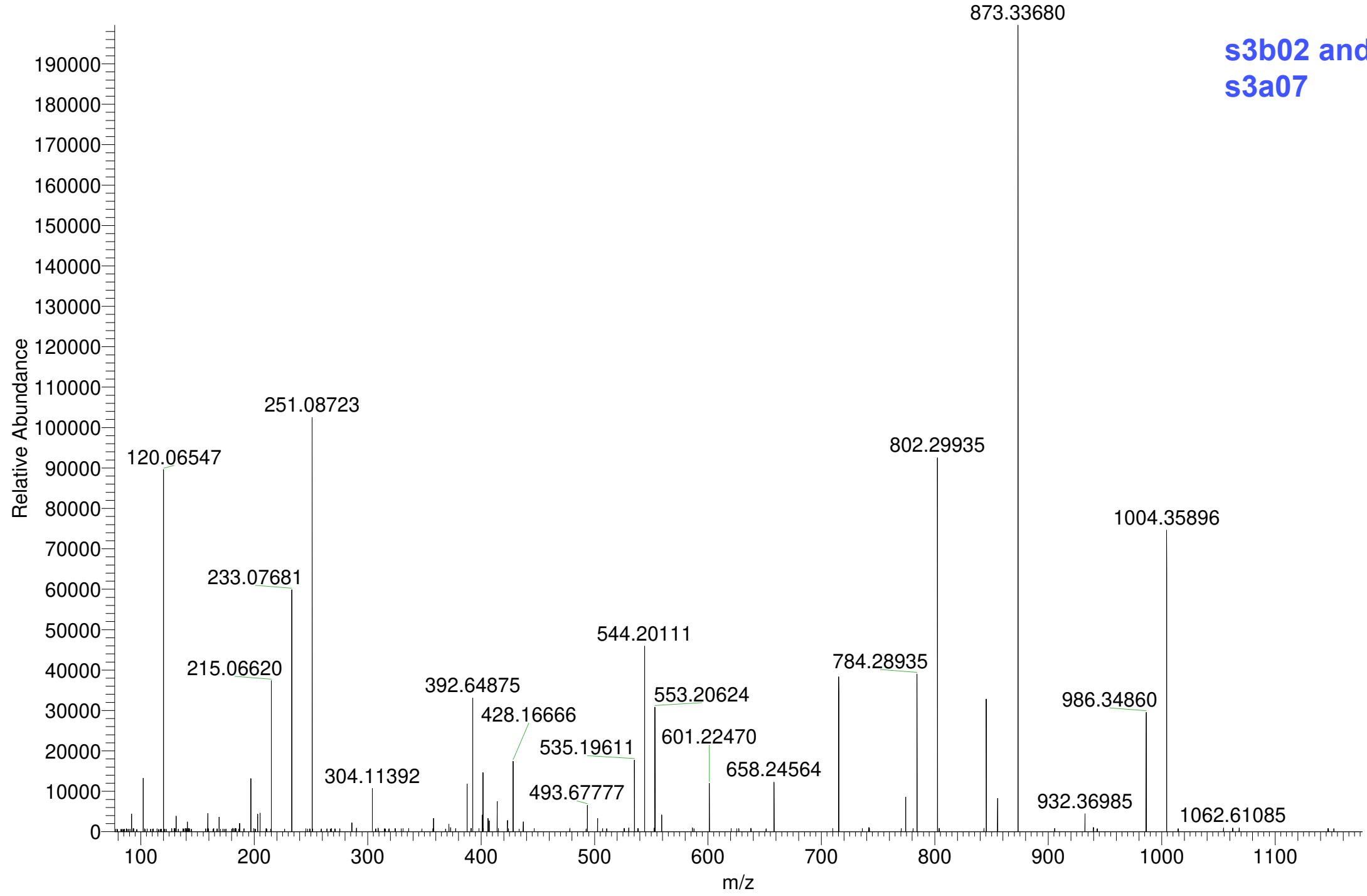
3E13

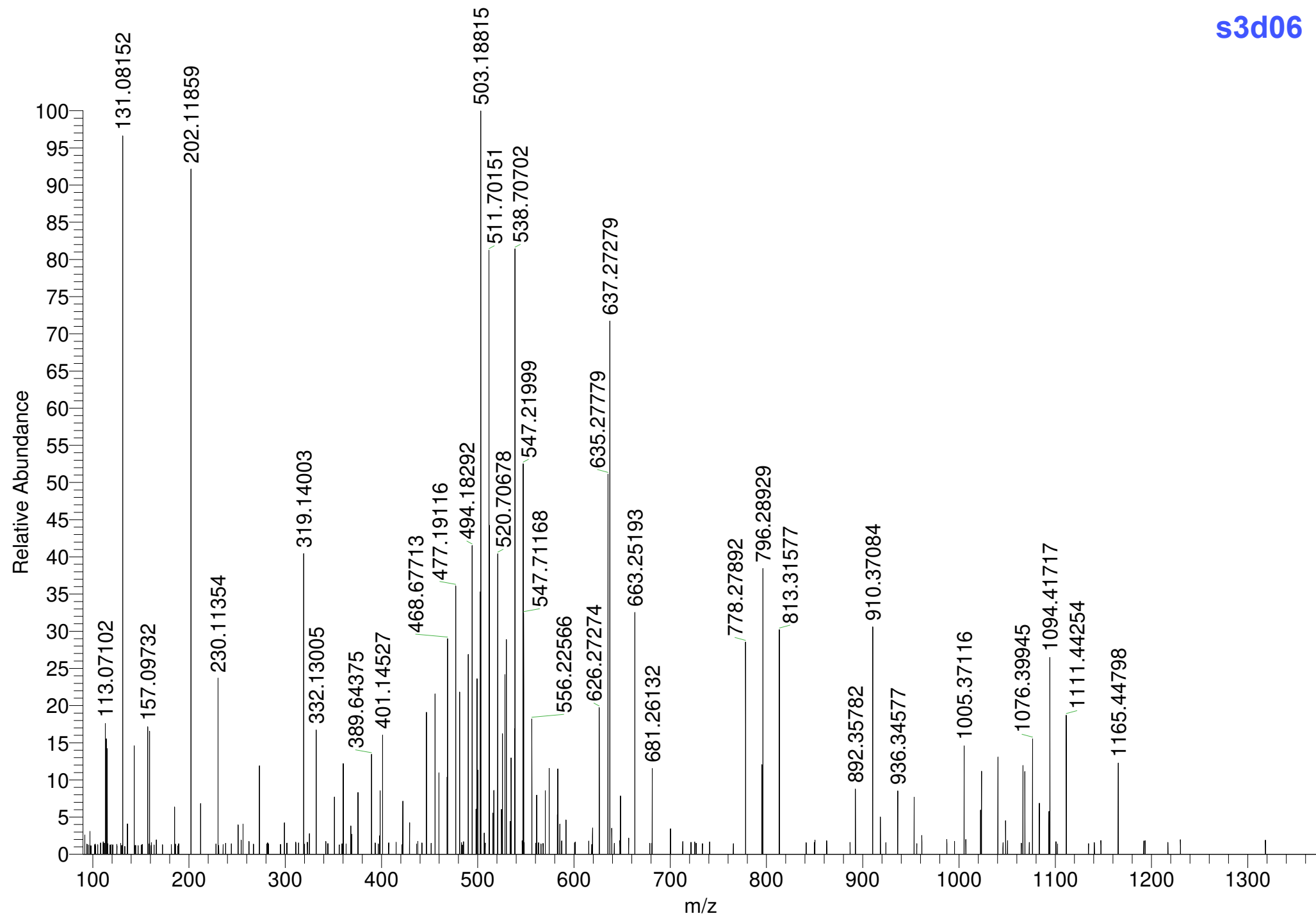


s3a19 and
s3e11



s3b02 and
s3a07





s3e01

