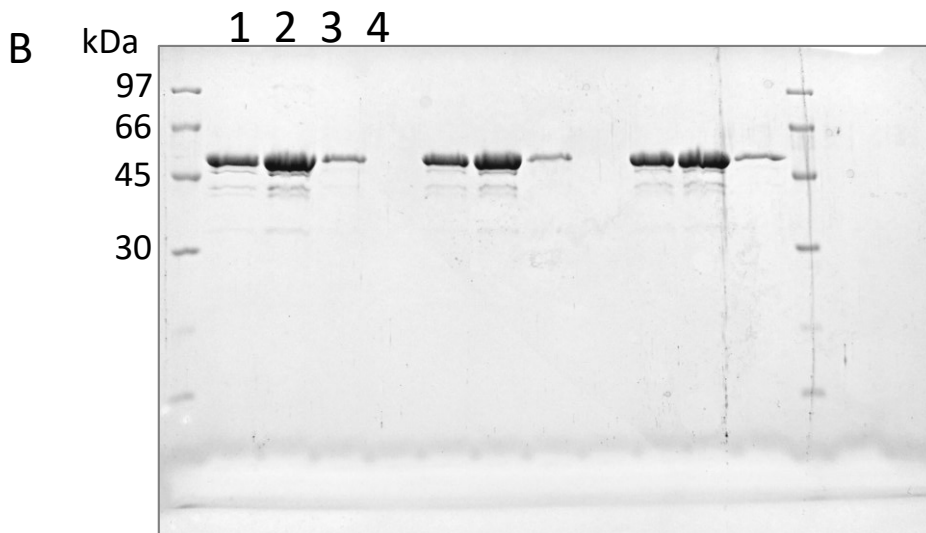


A: 1.5 µg (lane 1) and 3 µg (lane 2) Strep-GlnA1 on a coomassie-stained 12 % SDS-Gel.



B: SEC-fractions of Strep-GlnA1 SEC-run; elution volume 1: 13.5-14 ml, 2: 14-15 ml, 3: 15-15.5 ml, 4: 19.5 – 20 ml on a coomassie-stained 12 % SDS-Gel