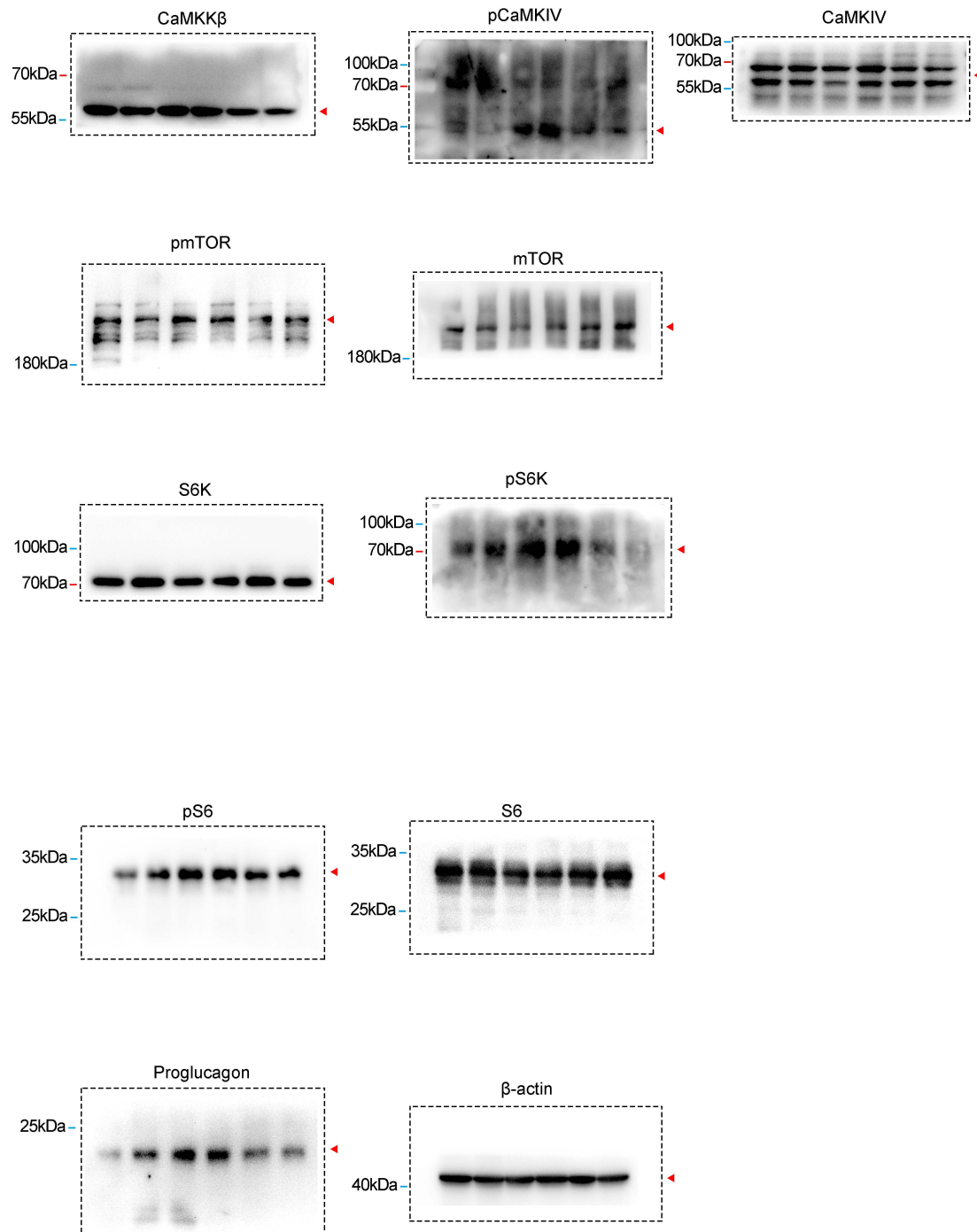
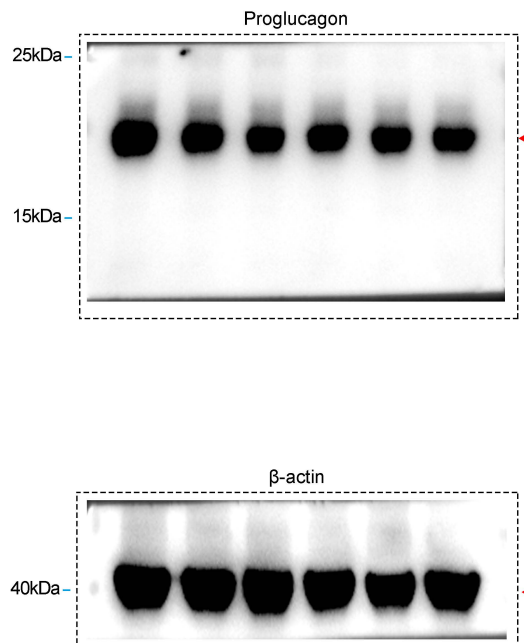


Figure 3E



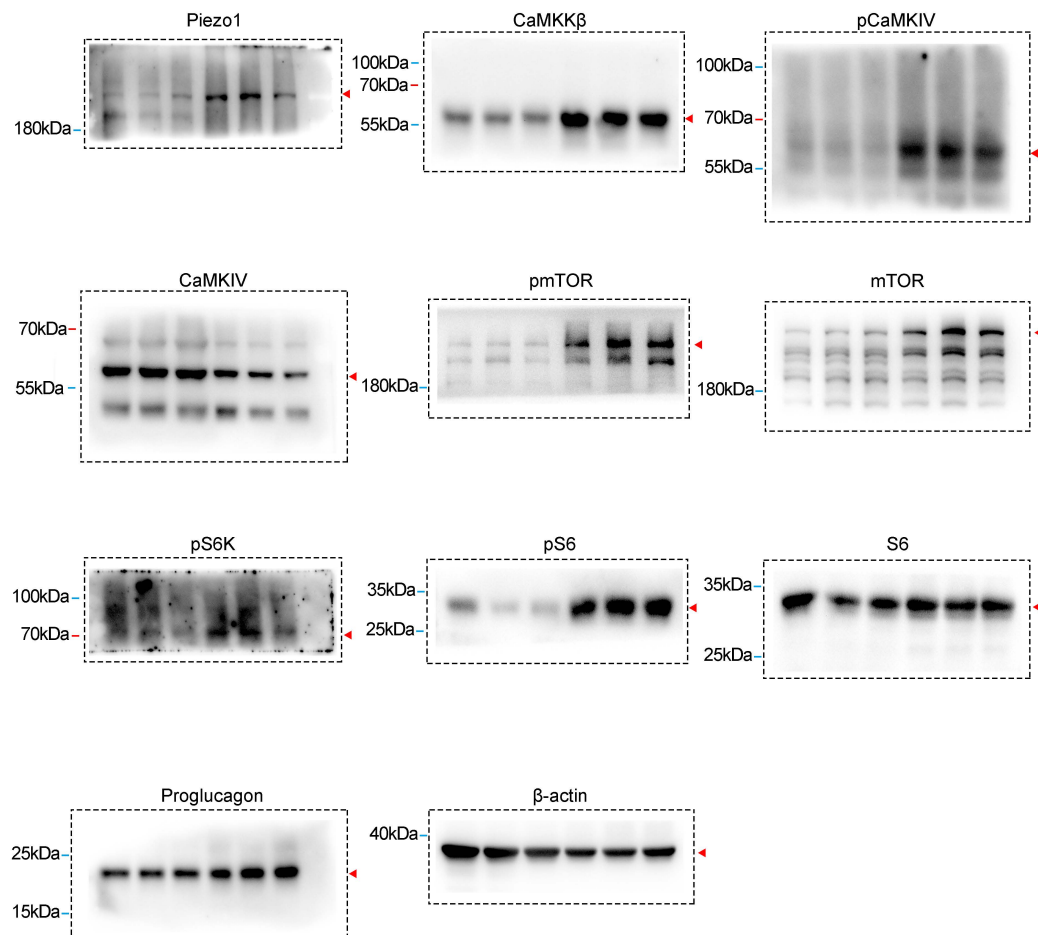
**Figure 3, Source Data 1.** Original membranes corresponding to Figure 3, panel E. Lanes 1 and 2 represent wild type (WT) samples, lanes 3 and 4 are WT samples that received intraperitoneal injections of Yoda1, while lanes 5 and 6 correspond to WT samples that received intraperitoneal injections of both GsMTx4 and Yoda1.

Figure 3J



**Figure 3, Source Data 1.** The original membranes corresponding to Figure 3, panel J. Lanes 1, 2, and 3 represent intraperitoneal injections of vehicle solution in *Piezo1* IntL-CKO, while lanes 4, 5, and 6 correspond to intraperitoneal injections of Yoda1 in *Piezo1* IntL-CKO.

Figure 3R



**Figure 3, Source Data 1.** Original membranes corresponding to Figure 3, panel R. Lanes 1, 2, and 3 represent high-fat-fed wild-type (WT) mice, while lanes 4, 5, and 6 were obtained following the surgical implantation of silicone beads into the ileum of high-fat-fed WT mice