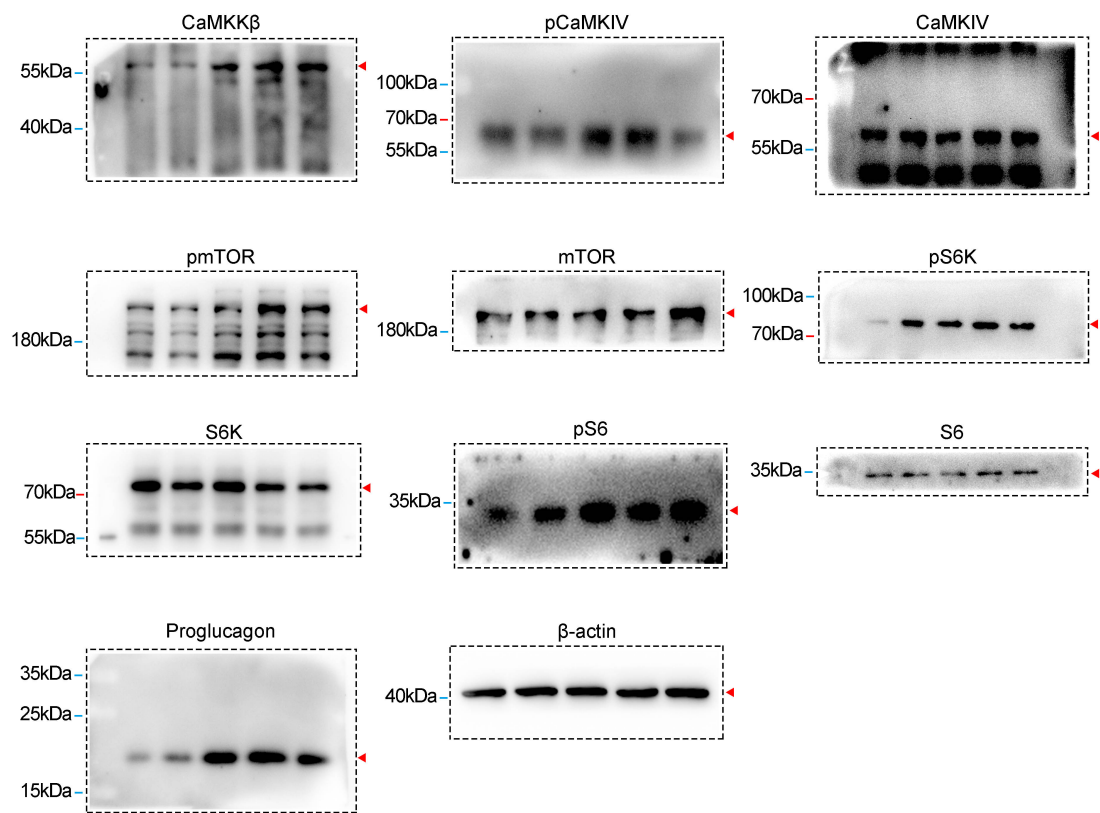
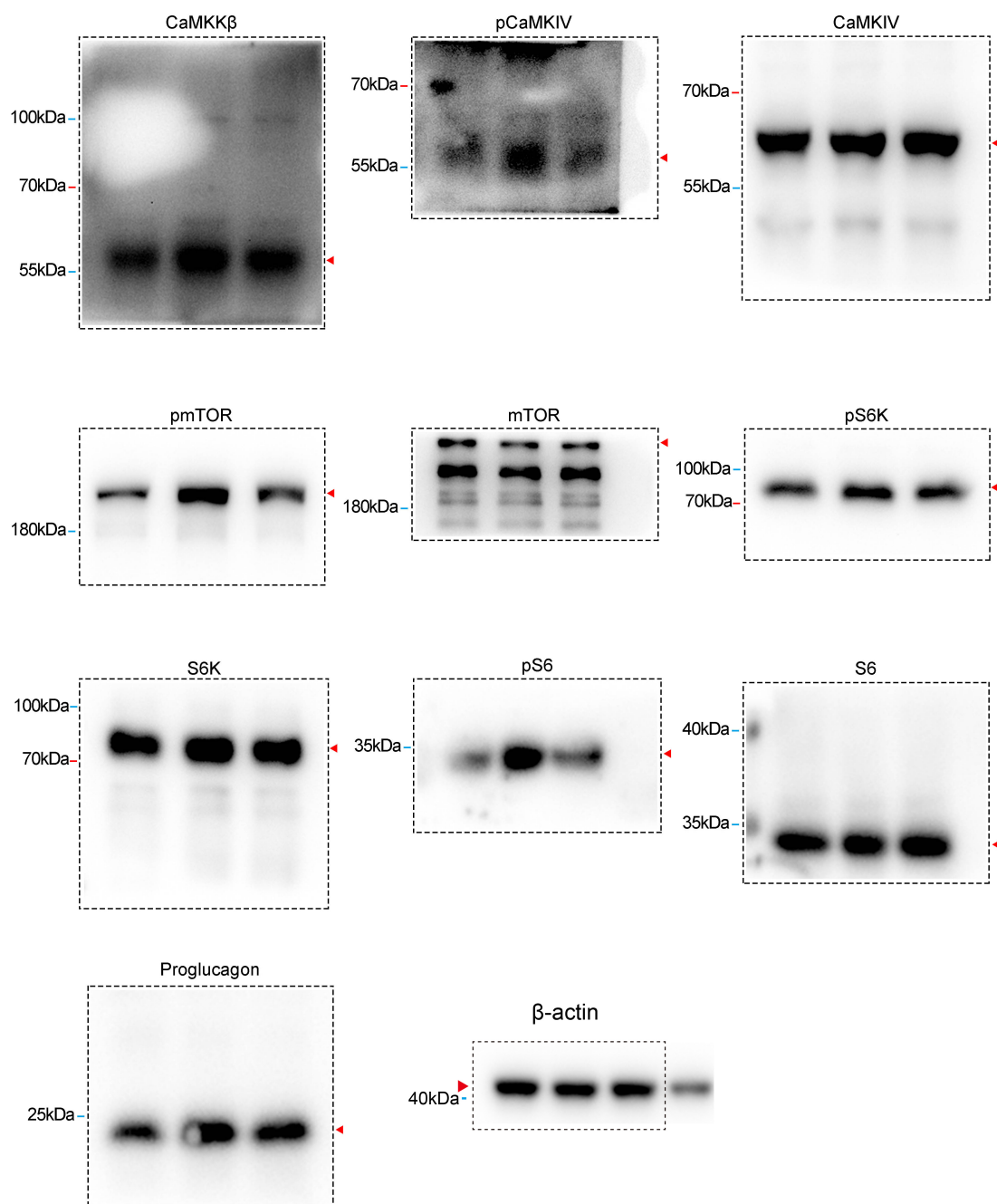


Figure 5D



**Figure 5, Source Data 1.** Original membranes corresponding to Figure 5, panel D. From left to right, STC-1 cells treated with 0, 1.25, 2.5, 5, 10  $\mu\text{mol/L}$  Yoda1, respectively.

Figure 5G



**Figure 5, Source Data 1.**Original membranes corresponding to Figure 5, panel G, showing the treatment of STC-1 cells. The first lane was treated with DMSO, the second lane with Yoda1, and the third lane with a combination of Yoda1 and GsMtx4.

Figure 5N

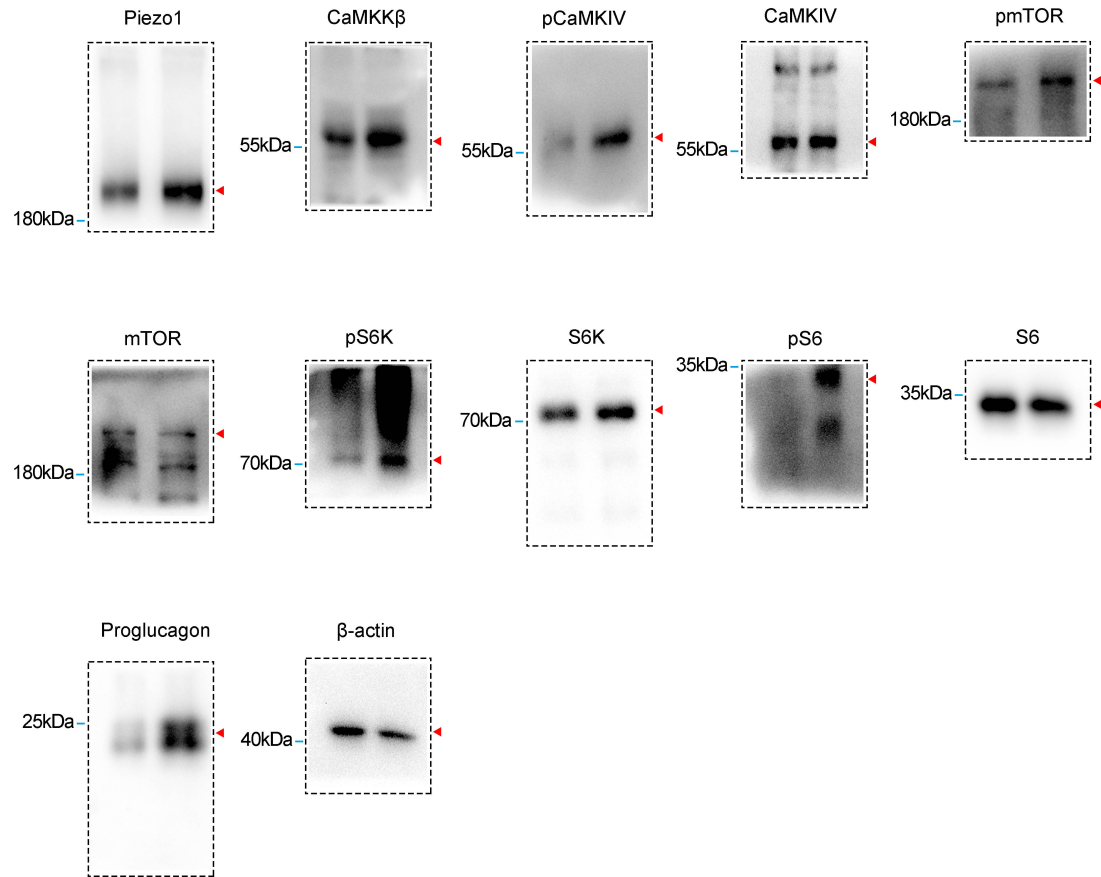


Figure 5, Source Data 1. Original membranes corresponding to Figure 5, panel N. Treatment of STC-1 cells: the first lane represents the unstretched treatment, while the second lane illustrates the stretched treatment.