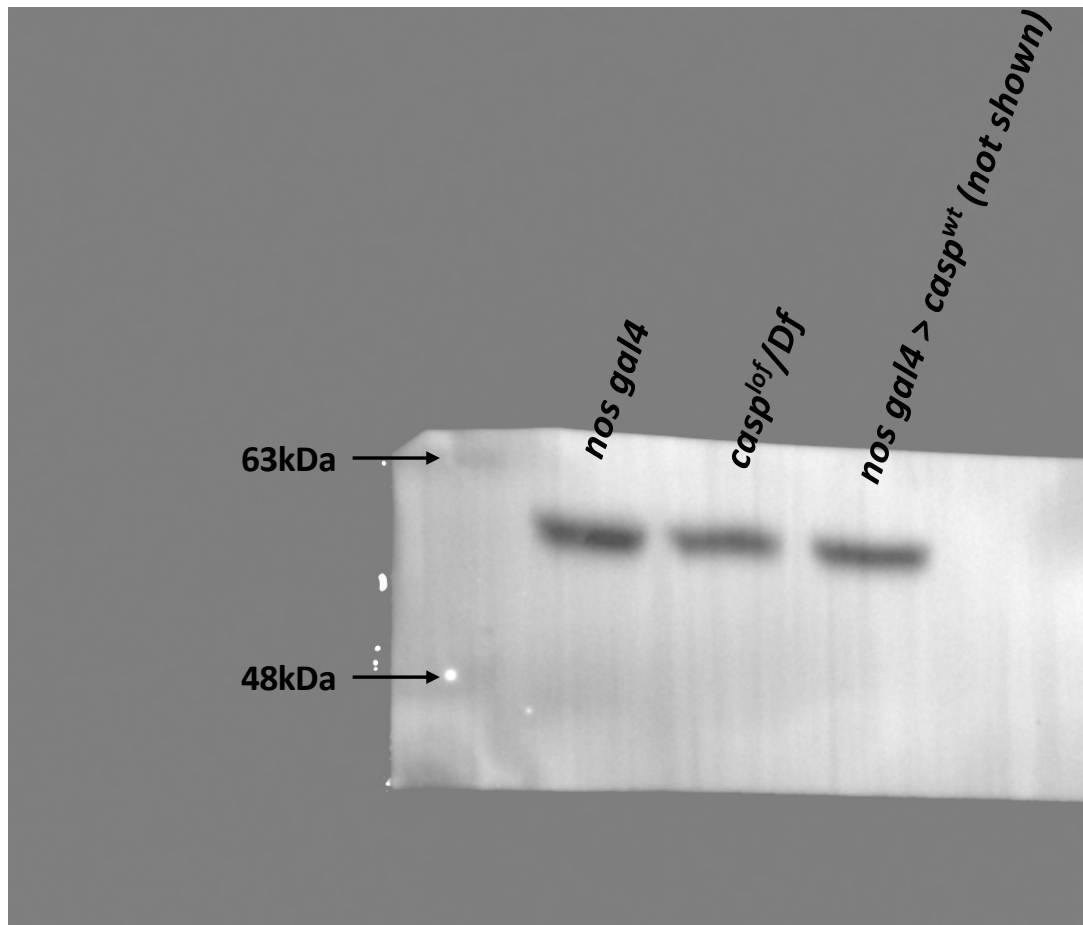


*Immunoblot: Rabbit anti Caspar
(1:10,000)*

Figure 1, Source Data 1.
Original membranes
corresponding to Figure
1, panel E. Blot was
probed with rabbit anti-
Caspar antibody. Biorad
Precision Plus Protein
standards (Dual Colour)
was used as molecular
weight marker



***Immunoblot: Mouse anti Tubulin
(1:10,000)***

Figure 1, Source Data 1.
Original membranes
corresponding to Figure
1, panel E. Blot was
probed with mouse
anti-Tubulin antibody.
Biorad Precision Plus
Protein standards (Dual
Colour) was used as
molecular weight
marker