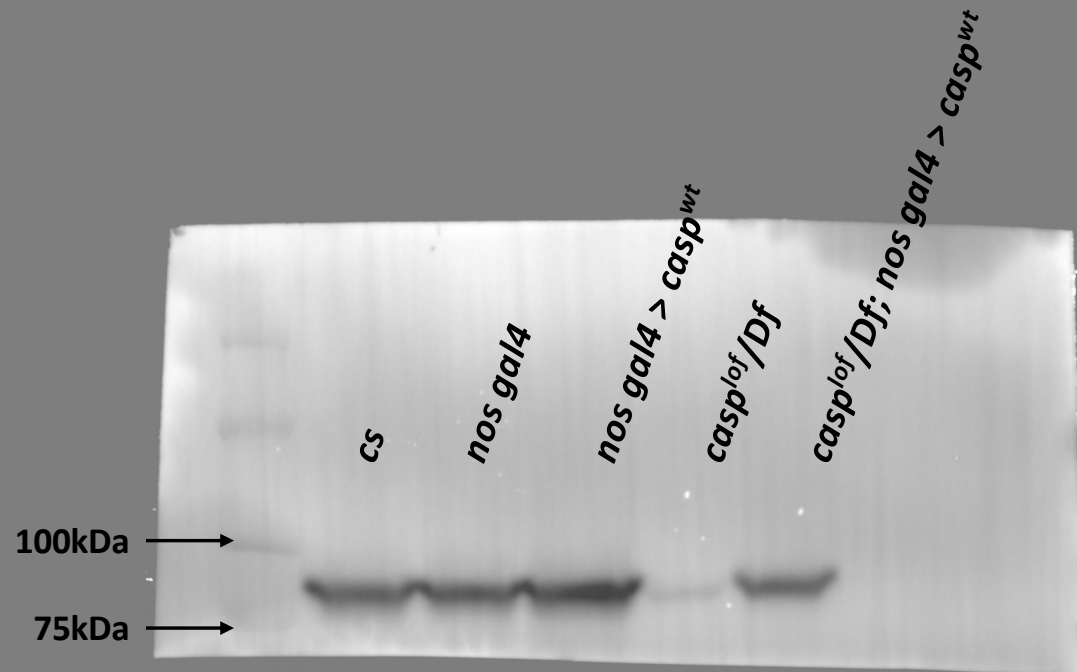
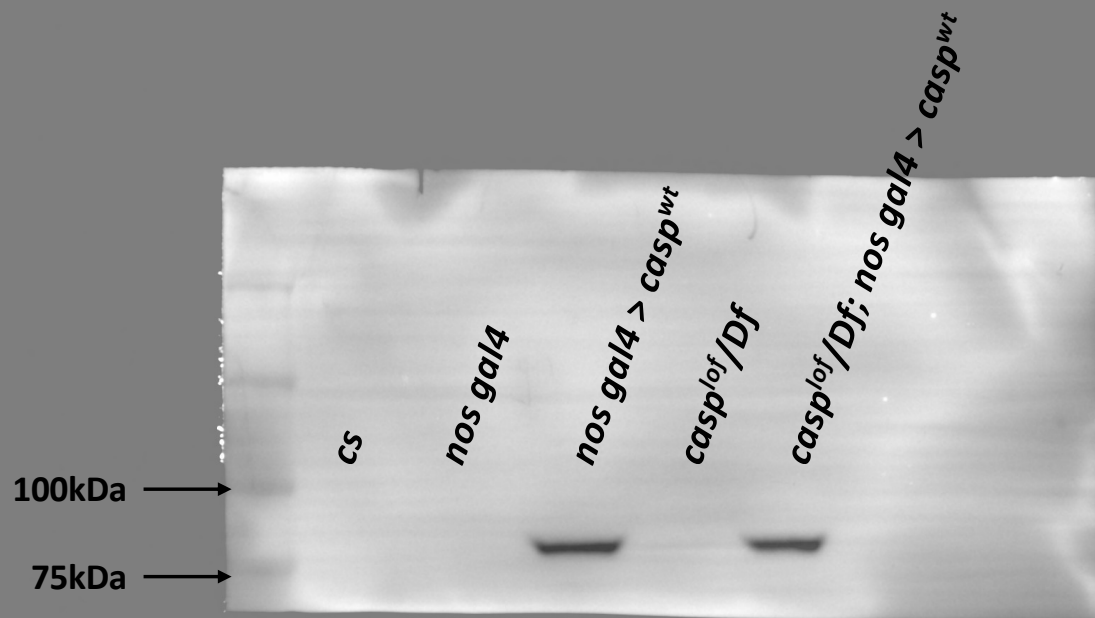


Figure 3, Source Data 1.
Original membranes
corresponding to Figure
3, panel G. Blot was
probed with rabbit anti-
Caspar antibody. Biorad
Precision Plus Protein
standards (Dual Colour)
was used as molecular
weight marker

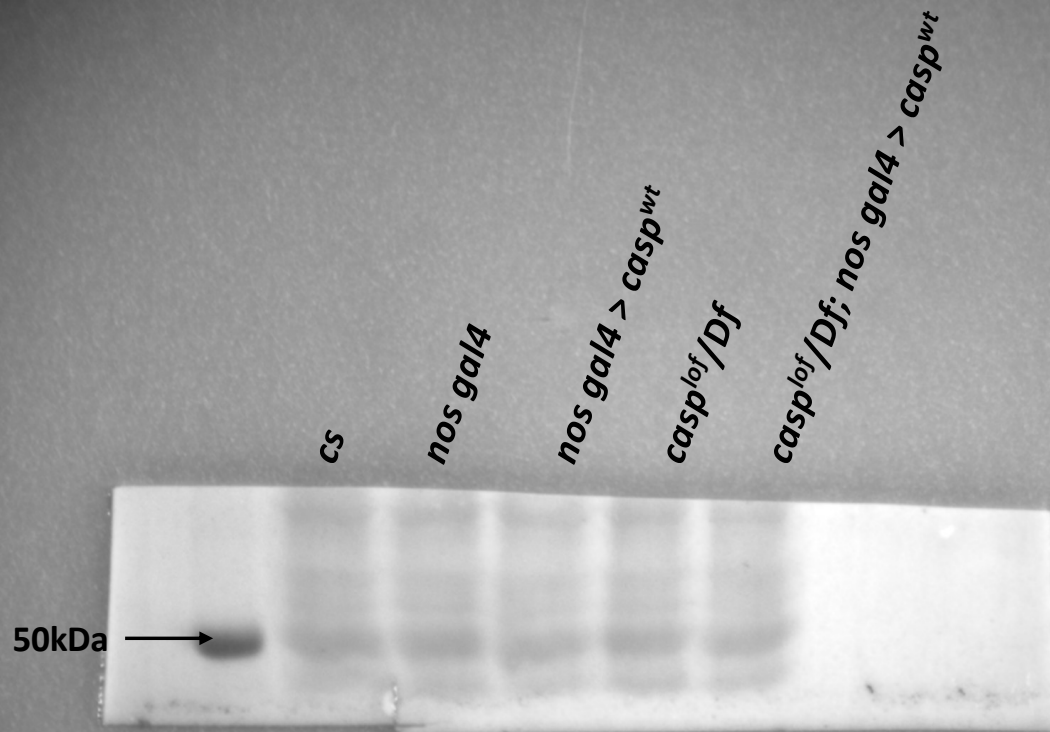


*Immunoblot: Rabbit anti Caspar
(1:10,000)*



*Immunoblot: Rabbit anti HA
(1:2000)*

Figure 3, Source Data 1.
Original membranes
corresponding to Figure
3, panel G. Blot was
probed with rabbit anti-
HA antibody. Biorad
Precision Plus Protein
standards (Dual Colour)
was used as molecular
weight marker



PONCEAU-S

Figure 3, Source Data 1. Original membranes corresponding to Figure 3, panel G. Blot represents Ponceau staining to show equal protein loading. Biorad Precision Plus Protein standards (Dual Colour) was used as molecular weight marker