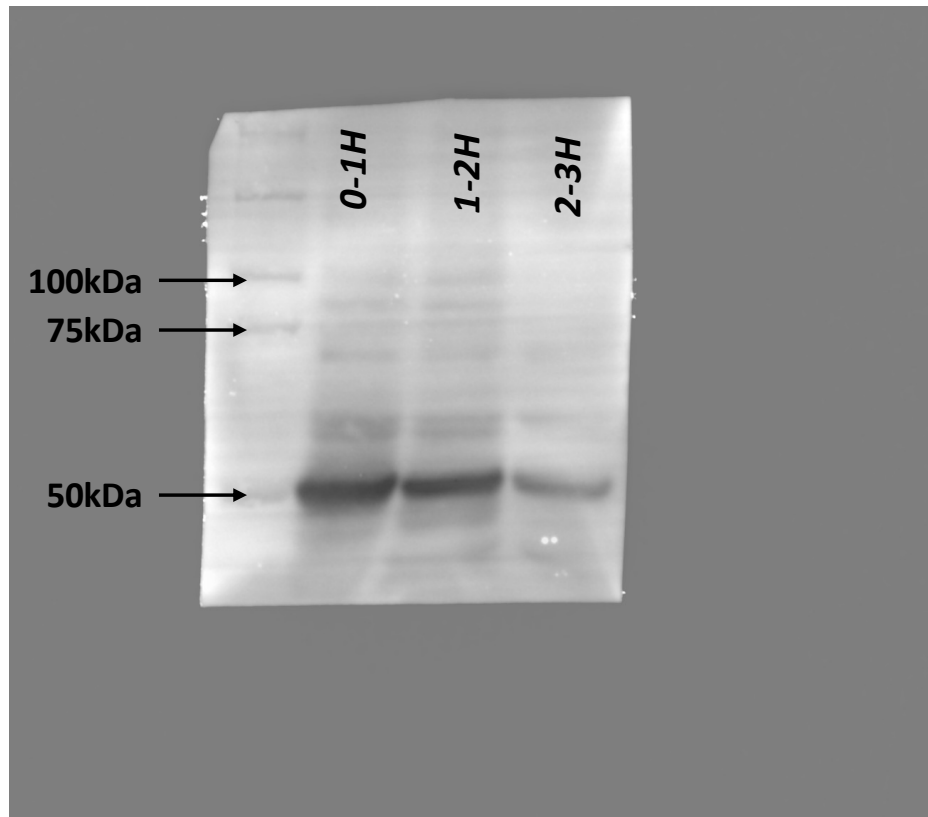
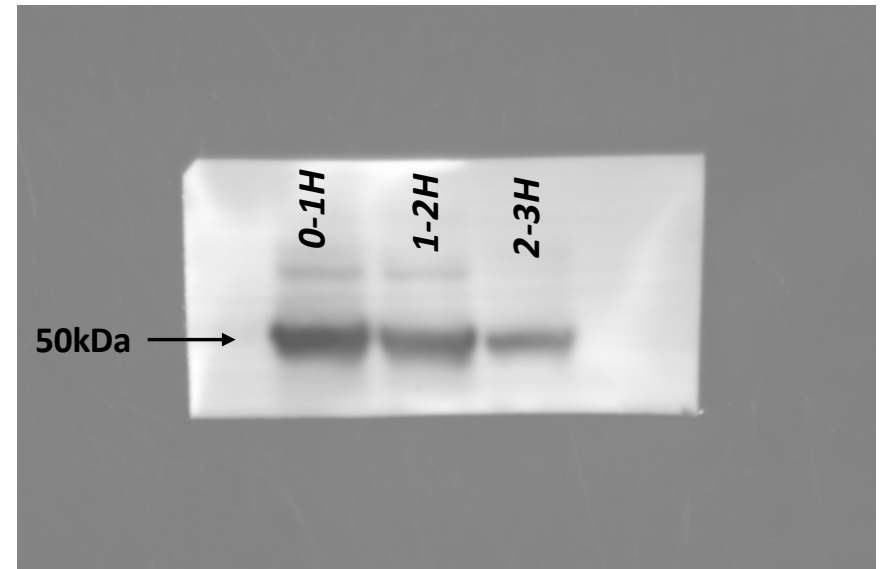


w1118

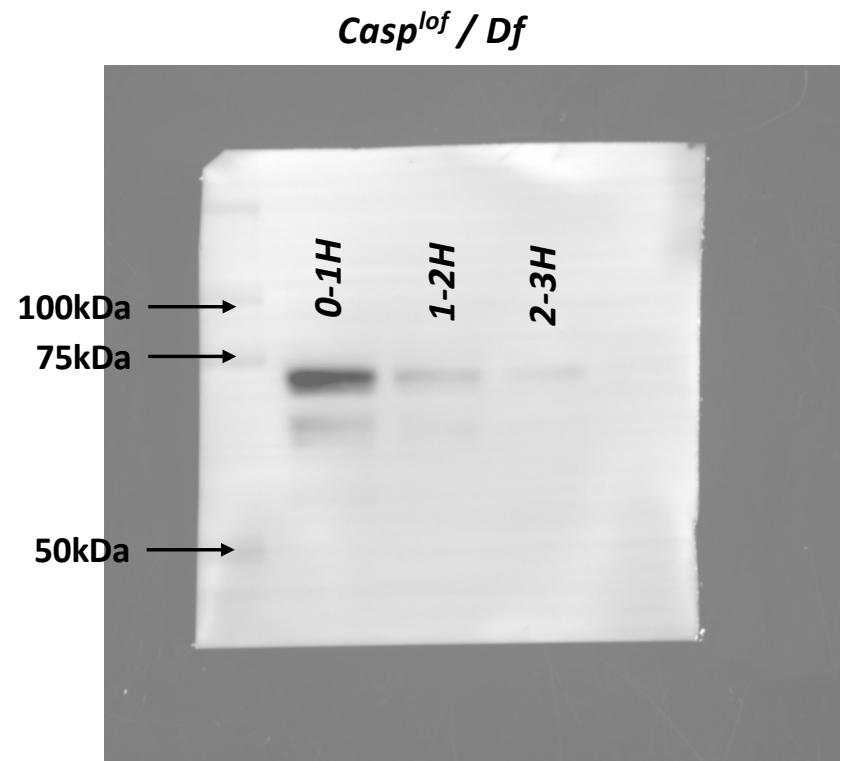
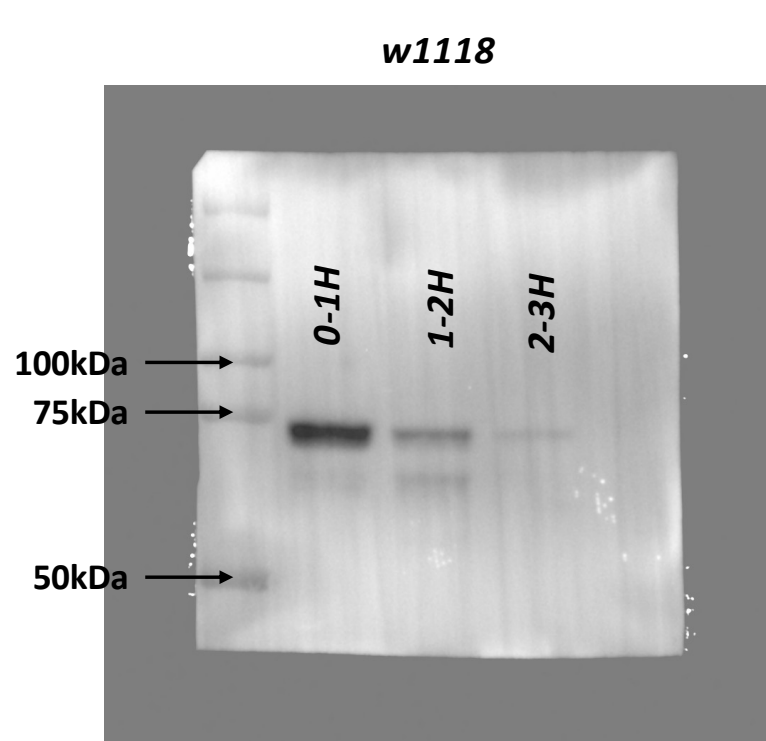


Casp^{lof} / Df



Immunoblot: Rabbit anti Me31B (1:1000)

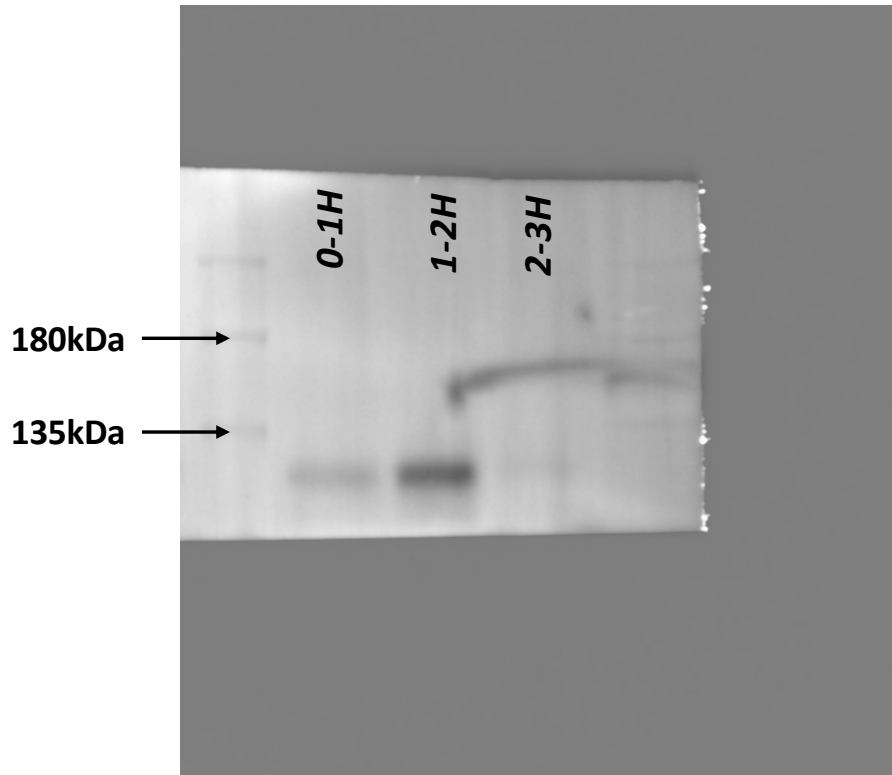
Figure 7, Source Data 1. Original membranes corresponding to Figure 7, panel A1 and A2. Blot was probed with rabbit anti-Me31B antibody.



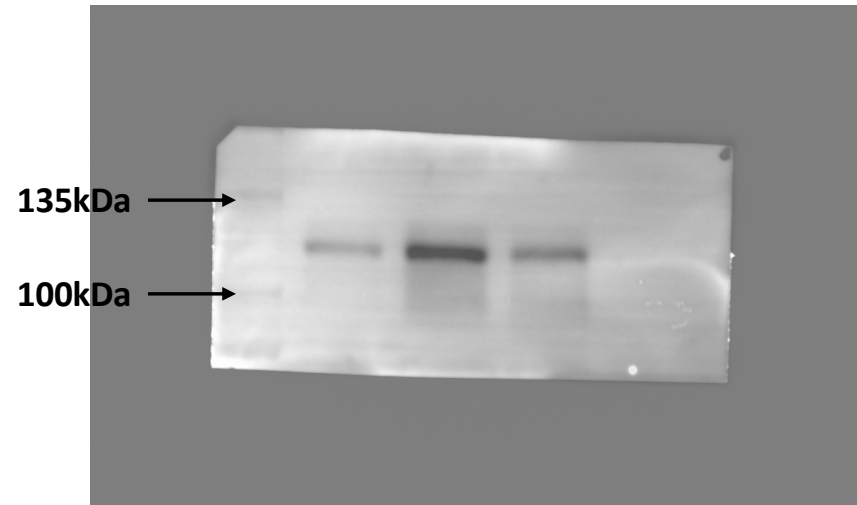
Immunoblot: Rat anti Tral (1:1000)

Figure 7, Source Data 1. Original membranes corresponding to Figure 7, panel B1 and B2. Blot was probed with rat anti-Tral antibody.

w1118

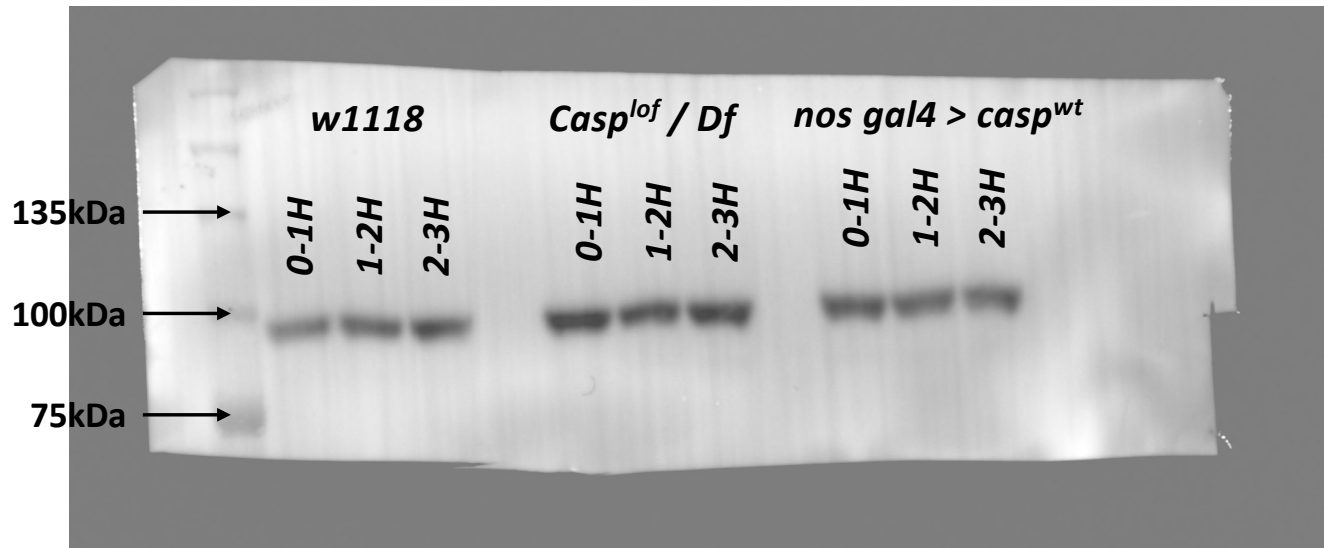


Casp^{lof} / Df



Immunoblot: Rabbit anti smaug (1:200)

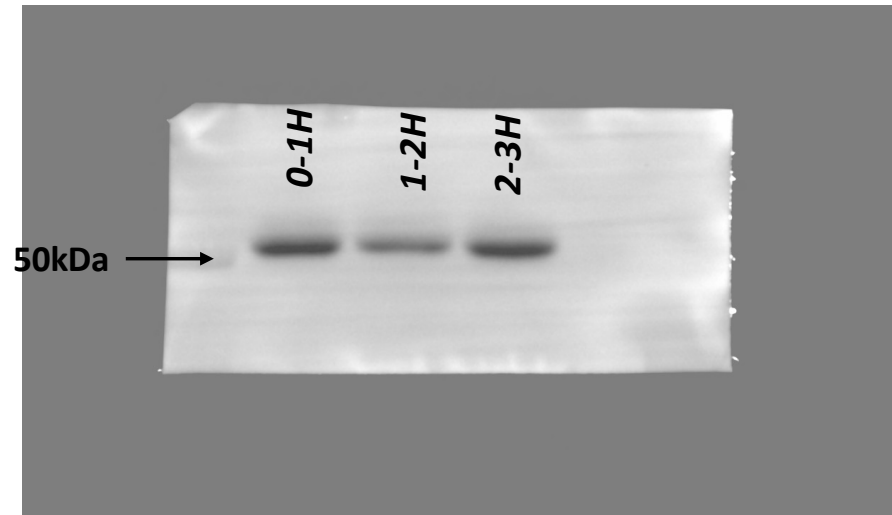
Figure 7, Source Data 1. Original membranes corresponding to Figure 7, panel C1 and C2. Blot was probed with rabbit anti-Smaug antibody.



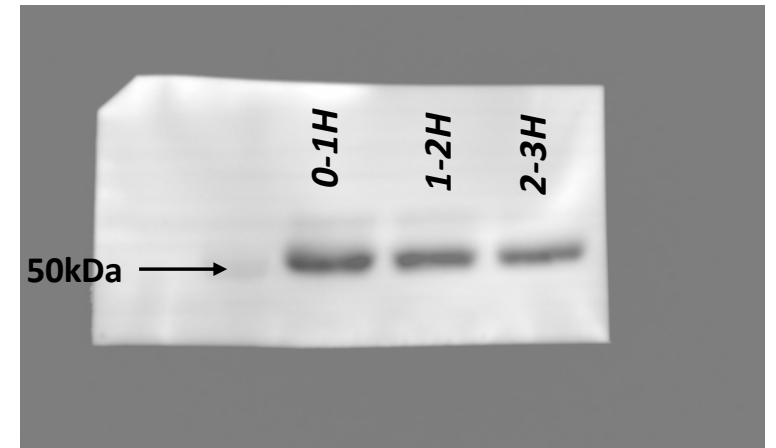
**Immunoblot: Rabbit anti Ter94
(1:2000)**

Figure 7, Source Data 1.
Original membranes
corresponding to Figure
7, panel D1 and D2.
Blot was probed with
rabbit anti-Ter94
antibody. Ter94 levels
in *nos gal4 > casp^{wt}* is
not shown the paper.

w1118



Casp^{lof} / Df



Immunoblot: Mouse anti Tubulin (1:10,000)

Figure 7, Source Data 1. Original membranes corresponding to Figure 7, panel E1 and E2. Blot was probed with mouse anti-Tubulin antibody.