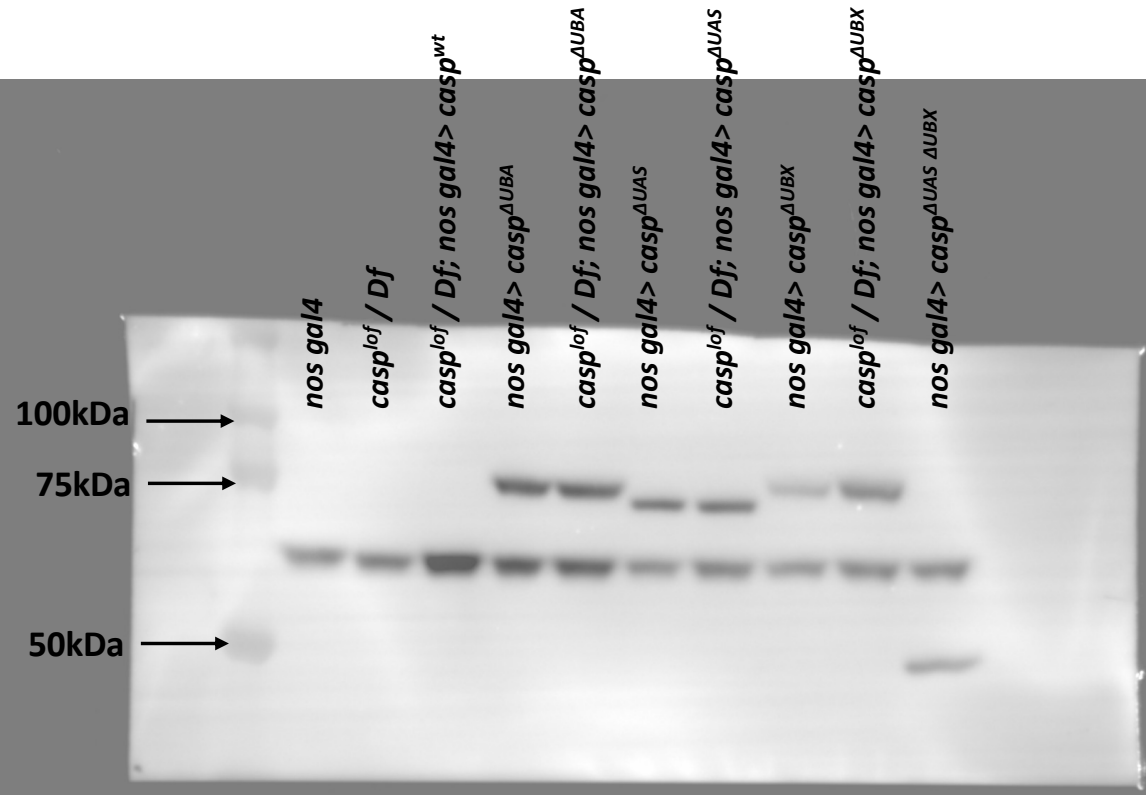


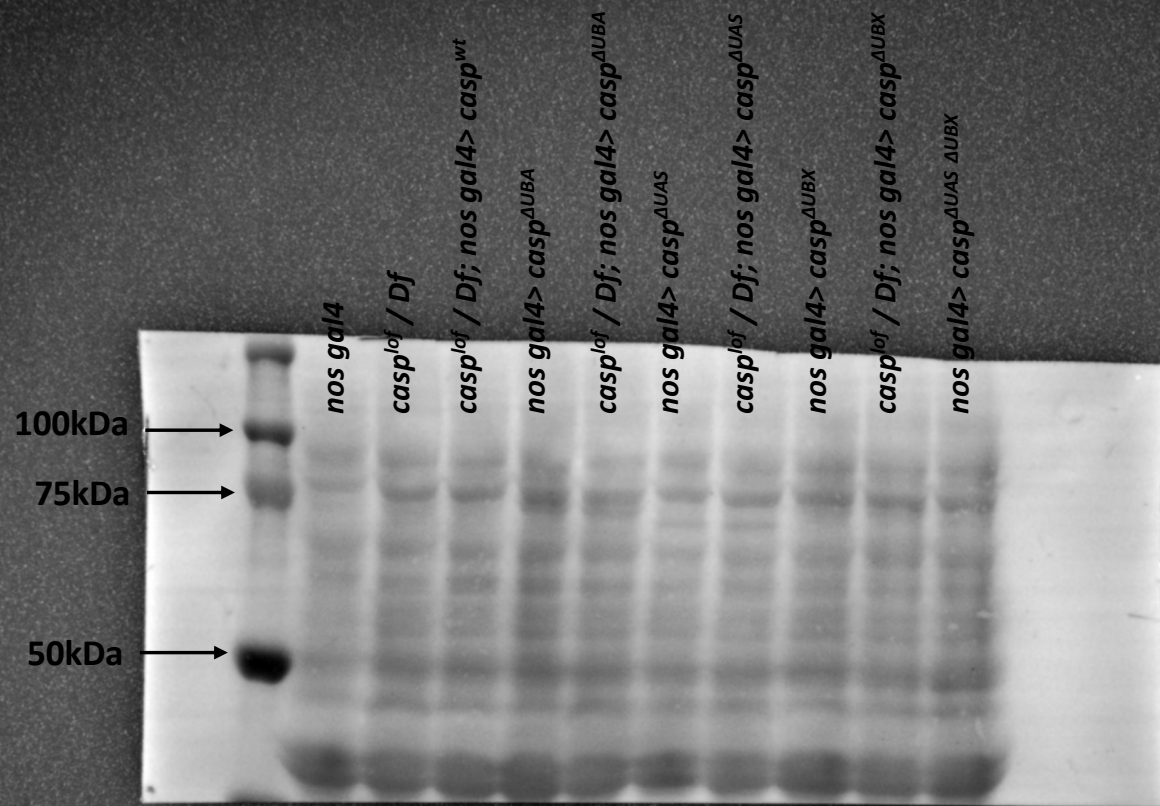
*Immunoblot: Rabbit anti Caspar  
(1:10,000)*

**Figure 9, Source Data 1.**  
**Original membranes**  
**corresponding to Figure**  
**9, panel B.** Blot was  
probed with rabbit anti-  
Caspar antibody. Biorad  
Precision Plus Protein  
standards (Dual Colour)  
was used as molecular  
weight marker



**Immunoblot: Rabbit anti HA  
(1:2,000)**

**Figure 9, Source Data 1.**  
**Original membranes**  
**corresponding to Figure**  
**9, panel B.** Blot was  
 probed with rabbit anti-  
 HA antibody. Biorad  
 Precision Plus Protein  
 standards (Dual Colour)  
 was used as molecular  
 weight marker



**Figure 9, Source Data 1.** Original membranes corresponding to Figure 9, panel B. Blot represents Ponceau staining to show equal protein loading. Biorad Precision Plus Protein standards (Dual Colour) was used as molecular weight marker

*Ponceau-s*