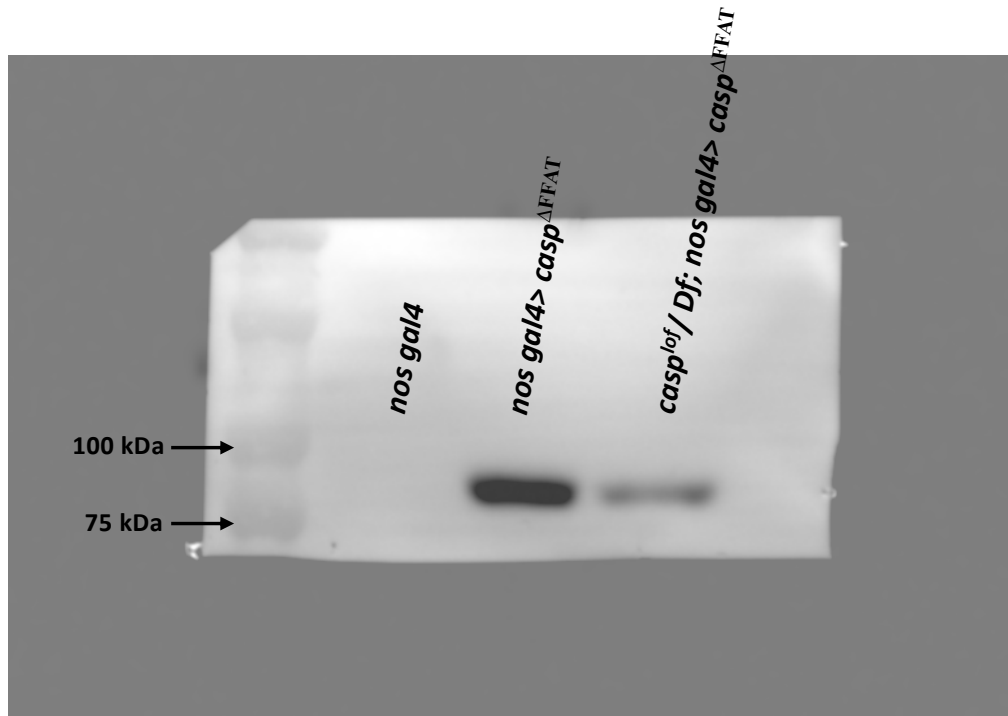


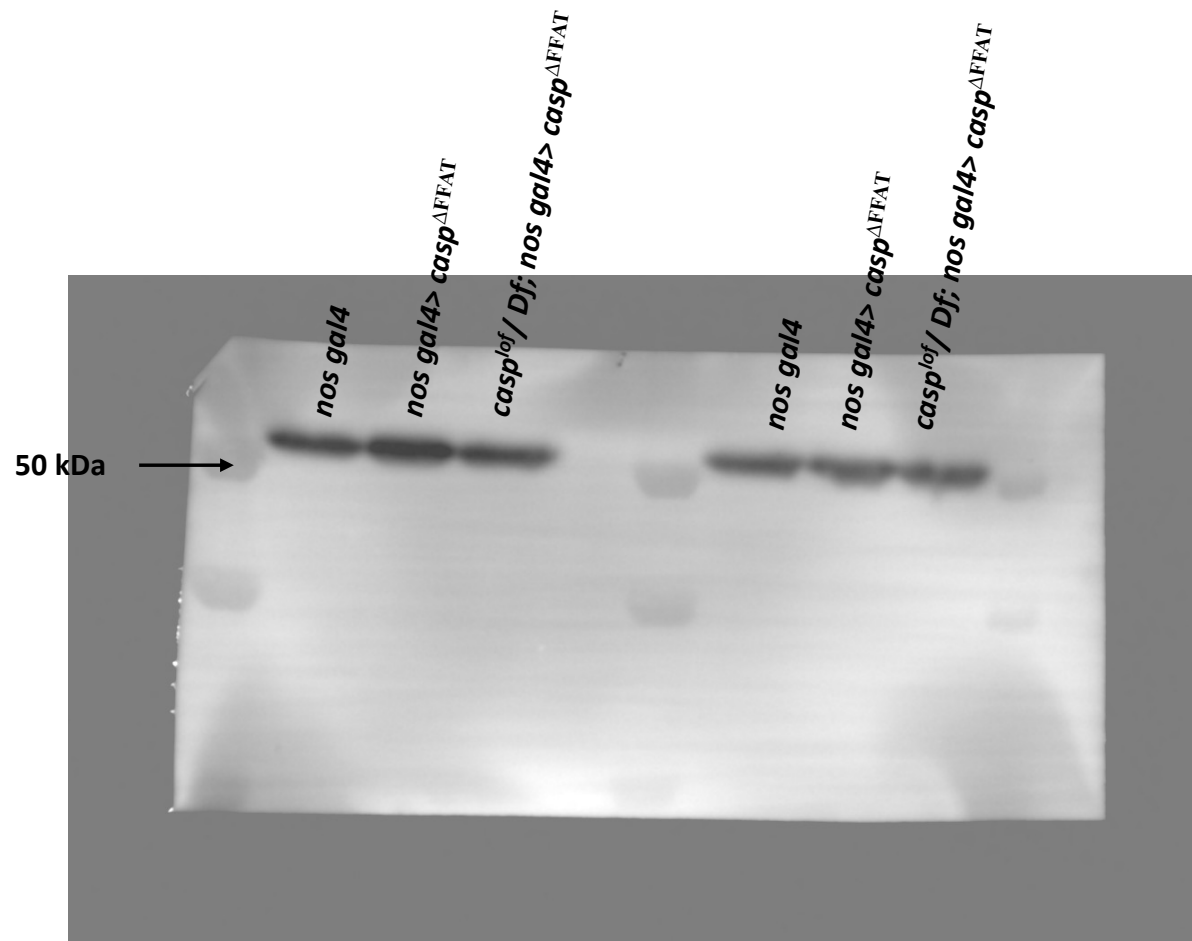
**Immunoblot: Rabbit anti-Caspar
(1:10,000)**

Figure 9, Supplementary Source Data 1. Original membranes corresponding to Figure 9, Supplementary 1 panel C. Blot was probed with rabbit anti-Caspar antibody. Biorad Precision Plus Protein standards (Dual Colour) was used as molecular weight marker



Immunoblot: Rabbit anti-HA (1:2000)

Figure 9, Supplementary Source Data 1. Original membranes corresponding to Figure 9, Supplementary 1 panel C. Blot was probed with rabbit anti-HA antibody. Biorad Precision Plus Protein standards (Dual Colour) was used as molecular weight marker



Immunoblot: Mouse anti-Tubulin (1:10,000)

Figure 9, Supplementary Source Data 1. Original membranes corresponding to Figure 9, Supplementary 1 panel C. Blot was probed with mouse anti-tubulin antibody. Biorad Precision Plus Protein standards (Dual Colour) was used as molecular weight marker