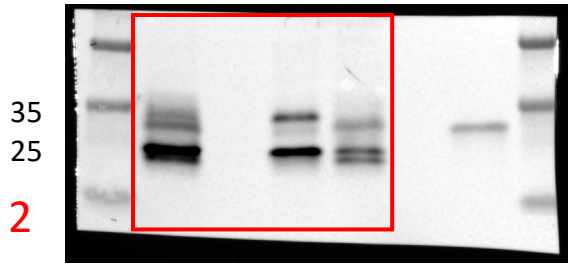
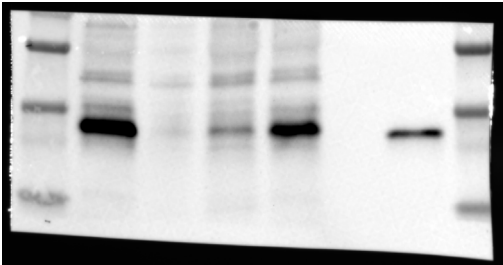
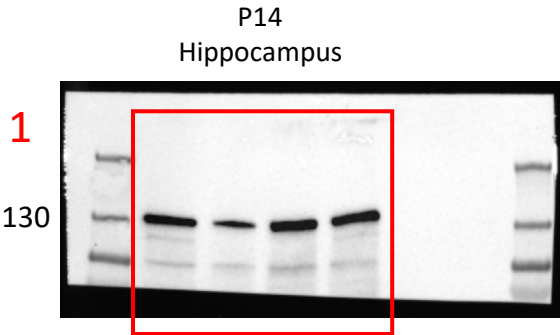


Figure 3 (panel C)-Source Data

Imaged 4/25/23 & 4/27/23  
Biorad 4-15% gel run 200V for 40 min  
10ug brain tissue lysate loaded  
  
1o AB: Pan FGF13 1:1000 in 5% BSA/TBST  
O/N @ 4oC

Figure 3C-Source Data 1



FGF13 S

Strip  
&  
Reprobe

Pan FGF13

Figure 3C-Source Data 2

WT  
Nestin KO  
EMX1 KO  
GAD2 KO  
blank  
HEK cell S

Gel cut where indicated, probed separately for vinculin (top) and FGF13-S (middle), then stripped, and probed for FGF13-pan (bottom).