

Liver

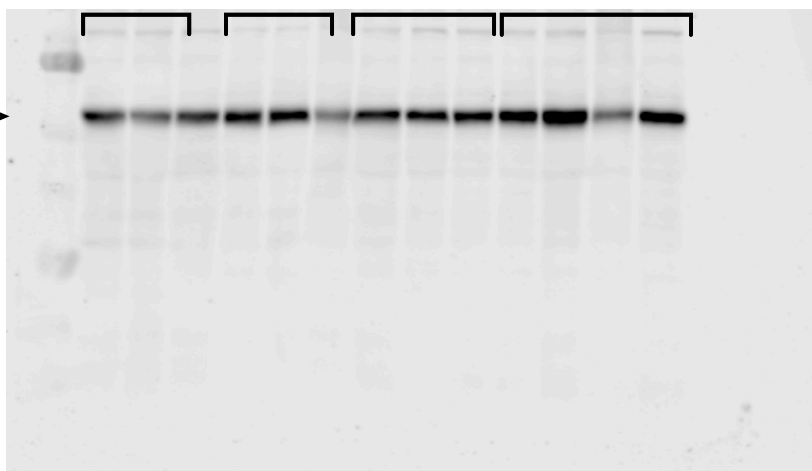
Smn^{2B/+}

Smn^{2B/-}

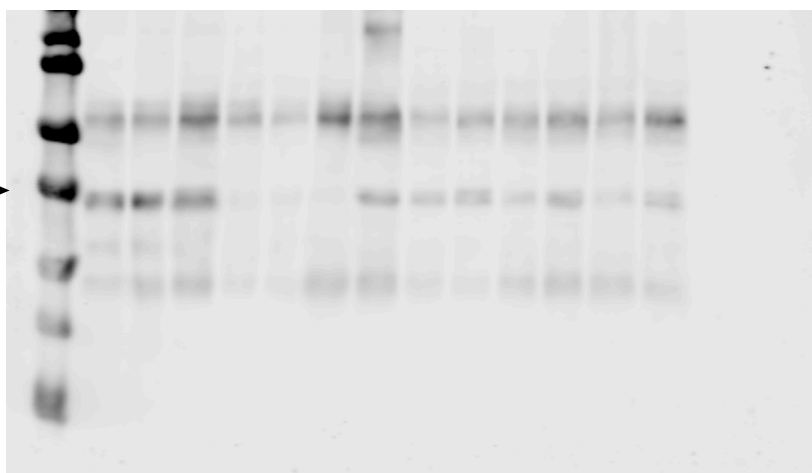
+/+; *Smn*^{2B/F7}

Alb^{Cre/+}; *Smn*^{2B/F7}

α -Tubulin



SMN



Muscle

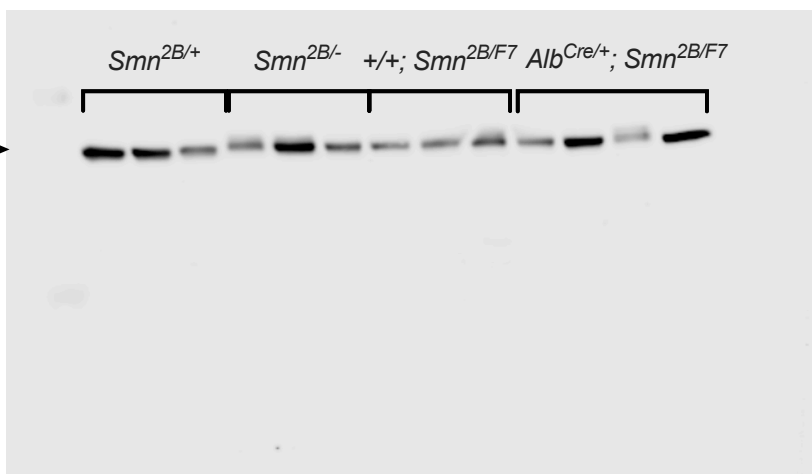
Smn^{2B/+}

Smn^{2B/-}

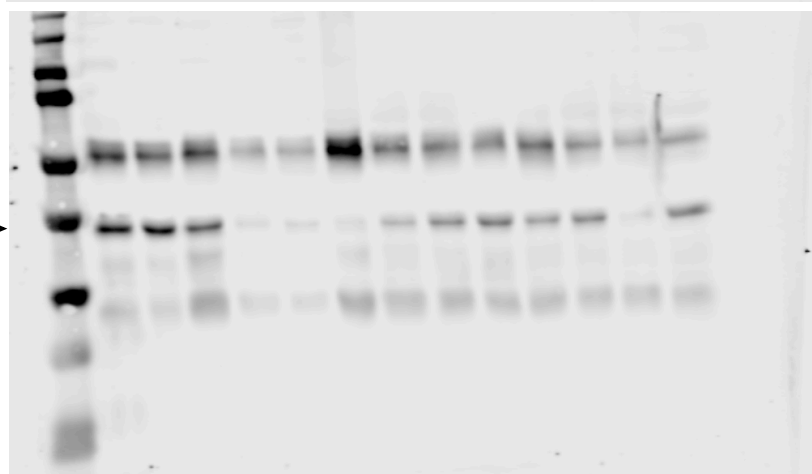
+/+; *Smn*^{2B/F7}

Alb^{Cre/+}; *Smn*^{2B/F7}

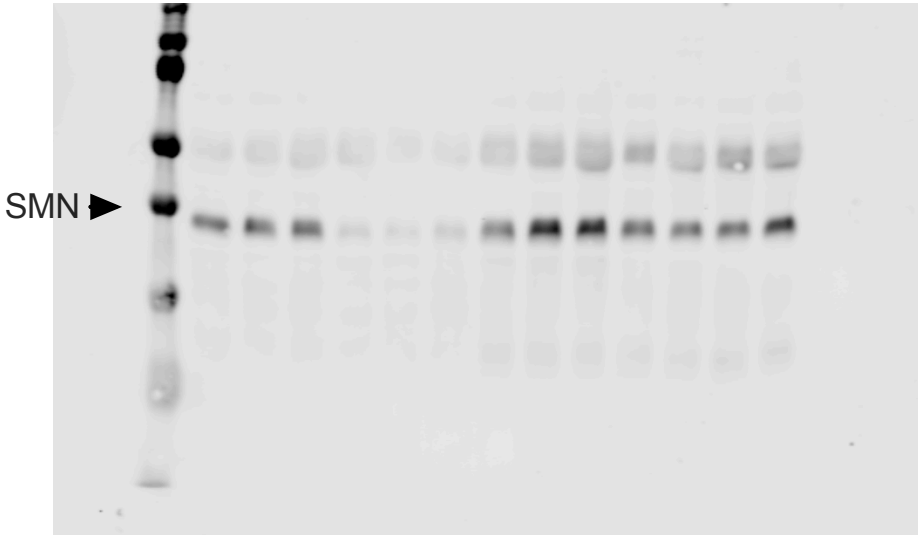
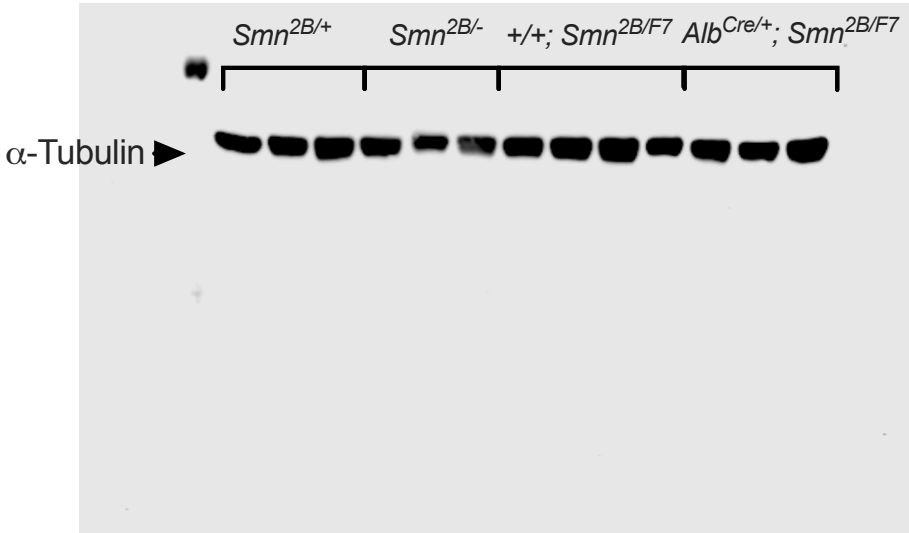
α -Tubulin



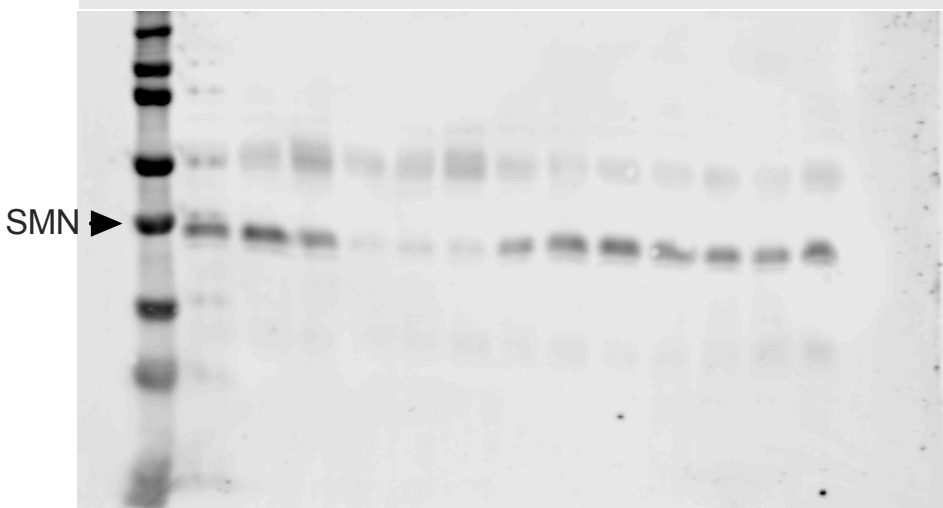
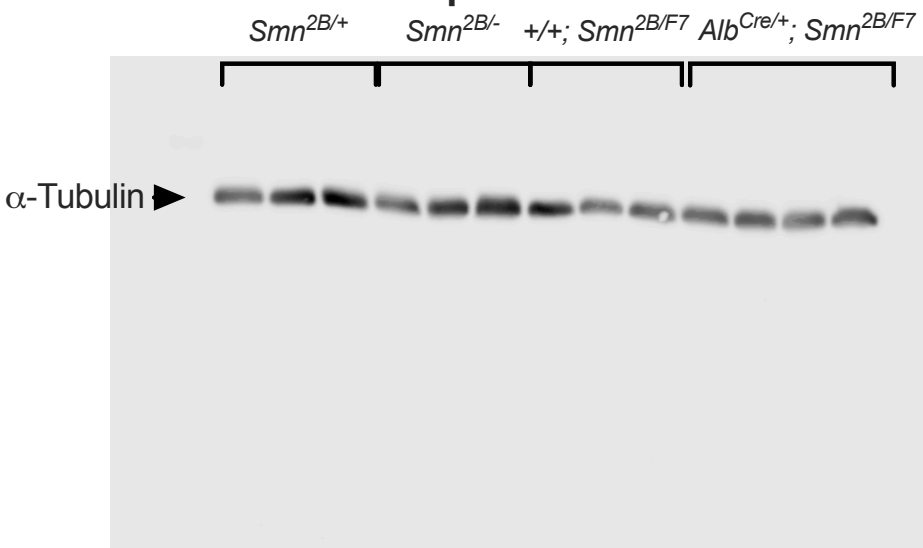
SMN



Pancreas



Spinal cord



Brain

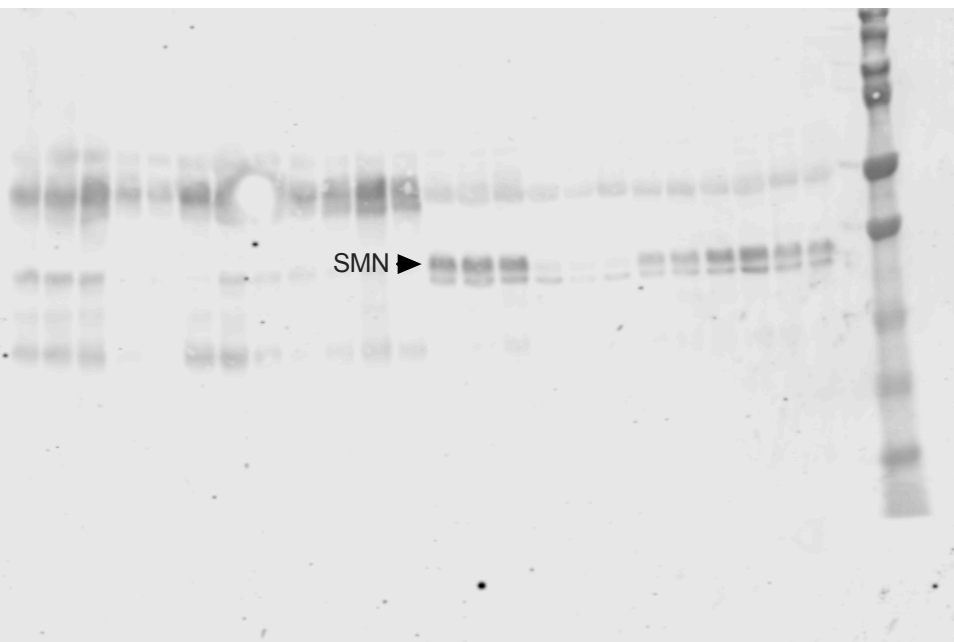
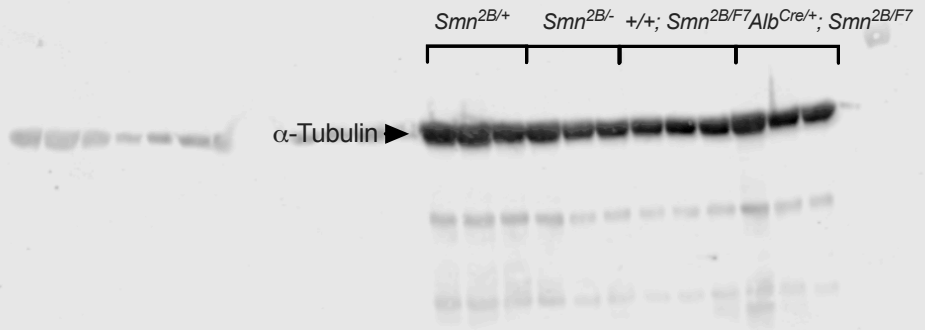


Figure 1- Source Data 1. Original membranes corresponding to Figure 1, panels D-H. Molecular weight markers were employed. The membranes correspond to each tissue separately (liver, brain, skeletal muscle, spinal cord, and pancreas) for tubulin and SMN.