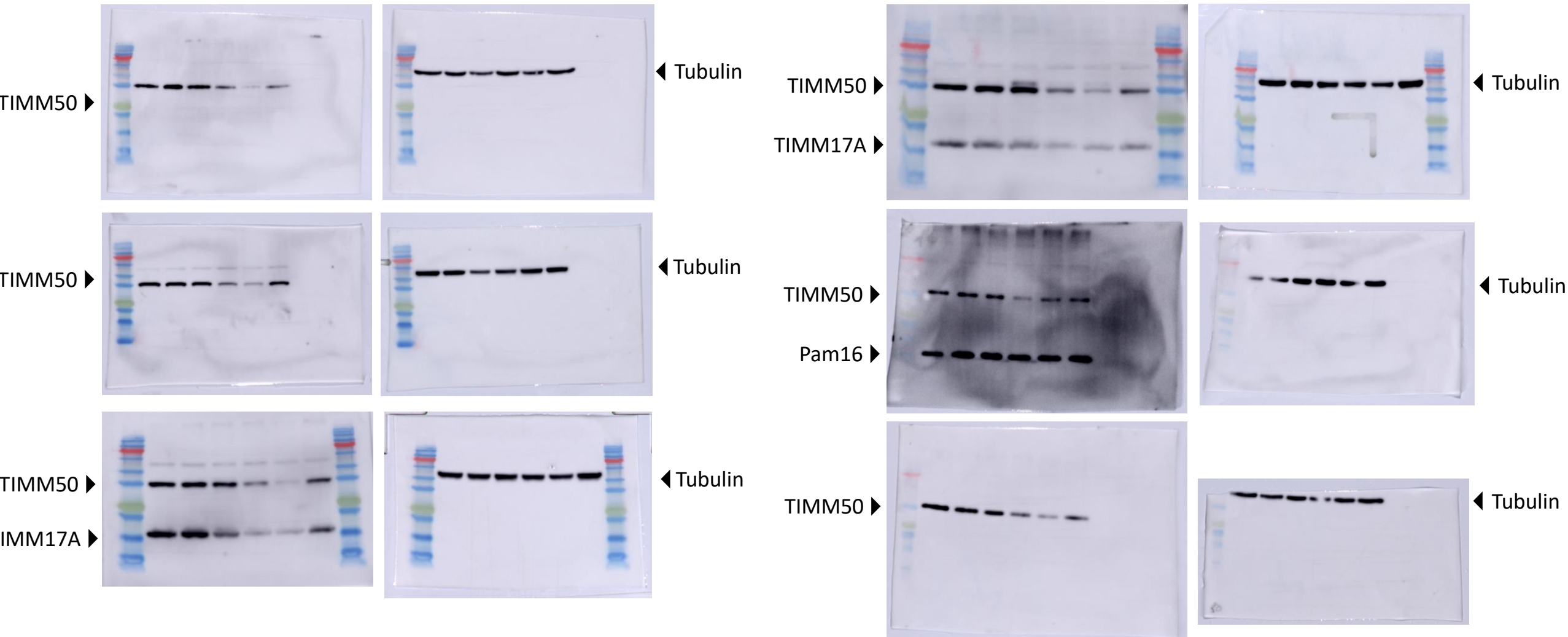


(Running order is Untreated / pLL3.7 control / Scr control / Sh1 / Sh2 / Sh3)

(Running order is Untreated / pLL3.7 control / Scr control / Sh1 / Sh2 / Sh3)

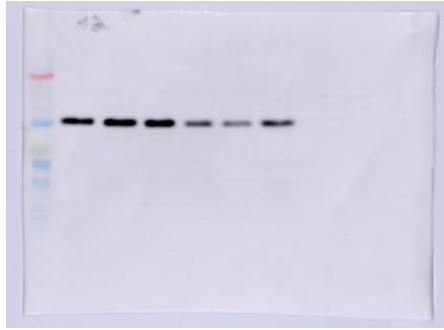


# TIMM50

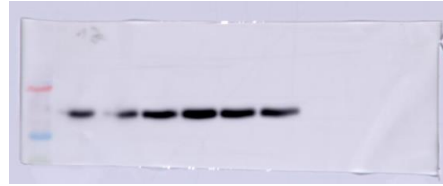
(Running order is Untreated / pLL3.7 control / Scr control / Sh1 / Sh2 / Sh3)

\*The bottom blot has only Scr control and Sh2 samples from 4 separate cultures and a different running order than the rest

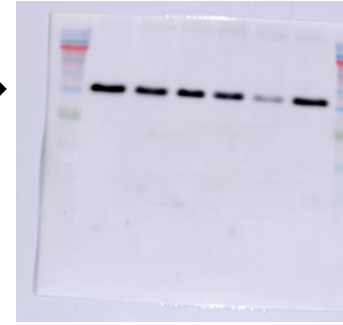
TIMM50 ►



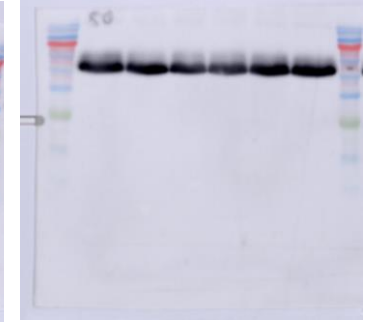
◄ Tubulin



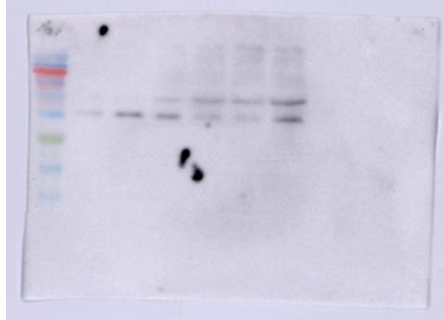
TIMM50 ►



◄ Tubulin



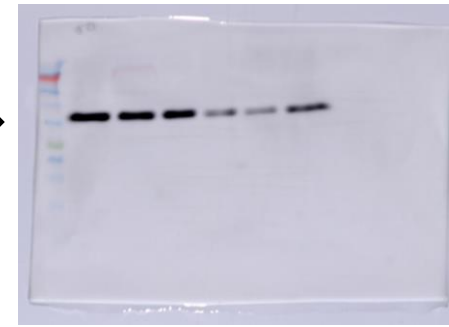
TIMM50 ►



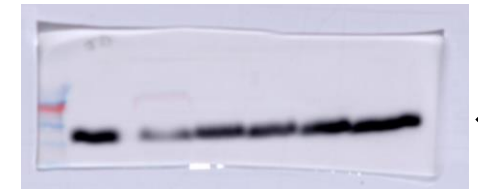
◄ Tubulin



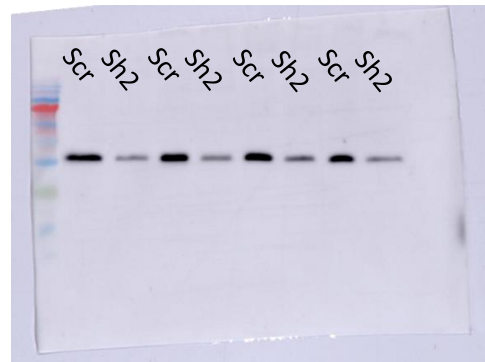
TIMM50 ►



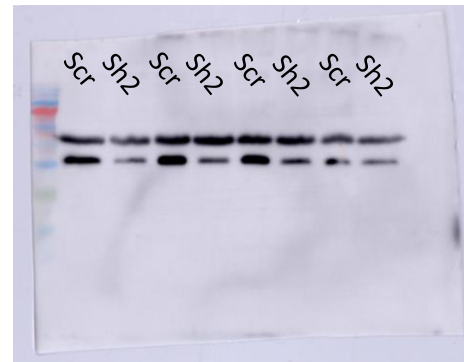
◄ Tubulin



TIMM50 ►



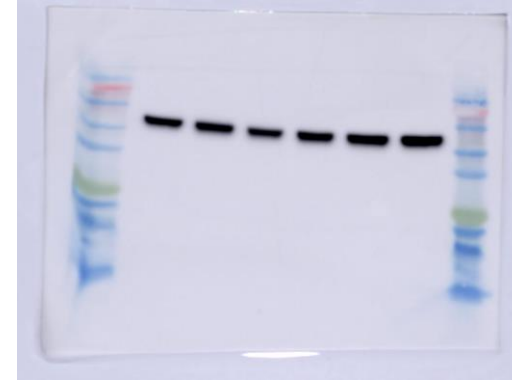
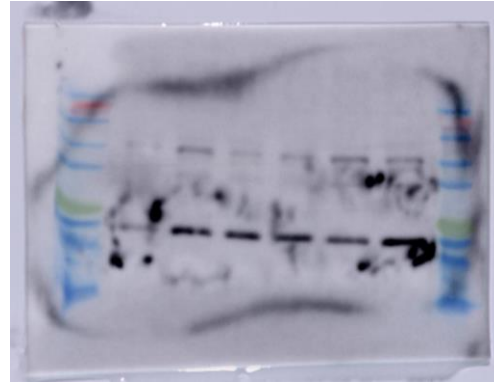
◄ Tubulin



# TIMM23

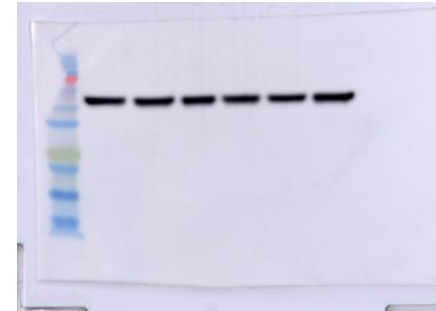
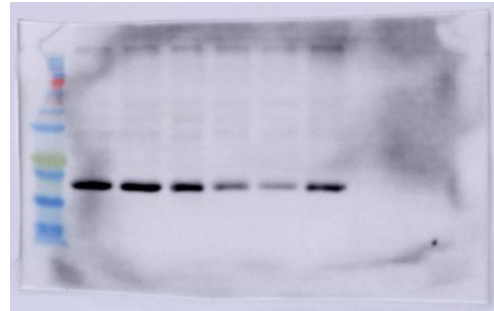
(Running order is Untreated / pLL3.7 control / Scr control / Sh1 / Sh2 / Sh3)

TIMM23 ►



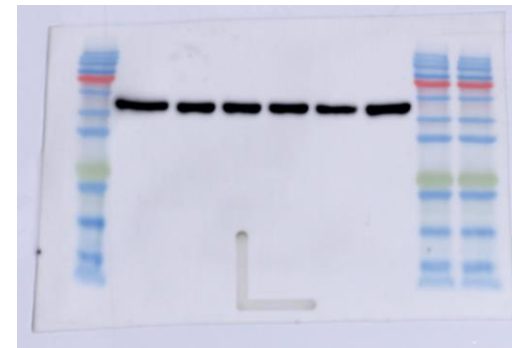
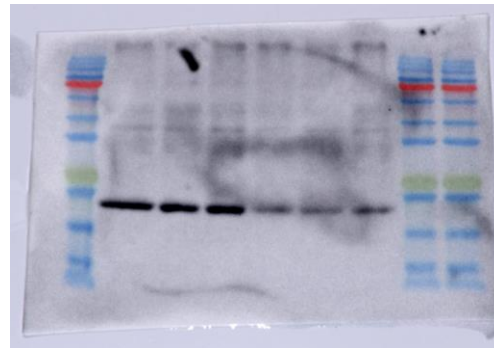
◄ Tubulin

TIMM23 ►



◄ Tubulin

TIMM23 ►



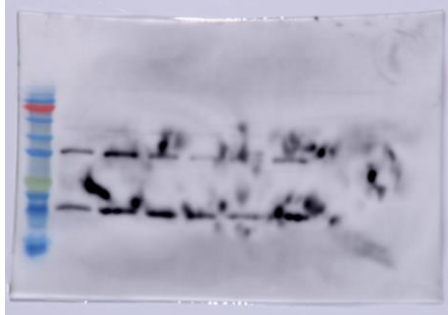
◄ Tubulin

# TIMM17A

(Running order is Untreated / pLL3.7 control / Scr control / Sh1 / Sh2 / Sh3)

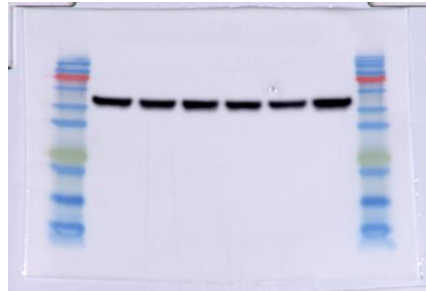
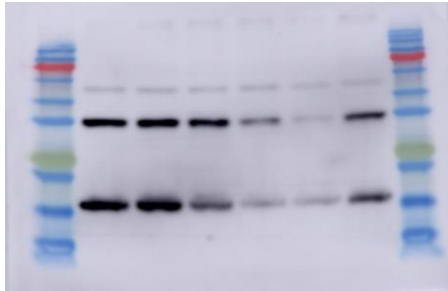
\*Note that the blot on the right had a different running order

TIMM50 ▶  
TIMM17A ▶



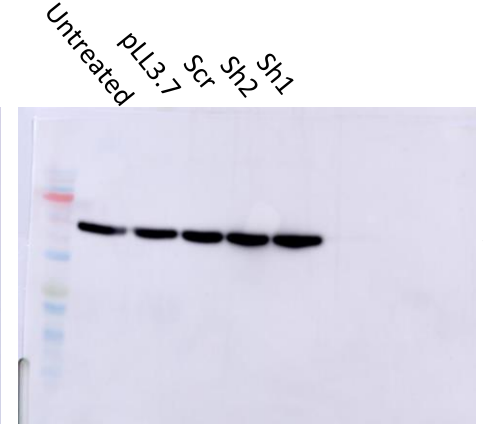
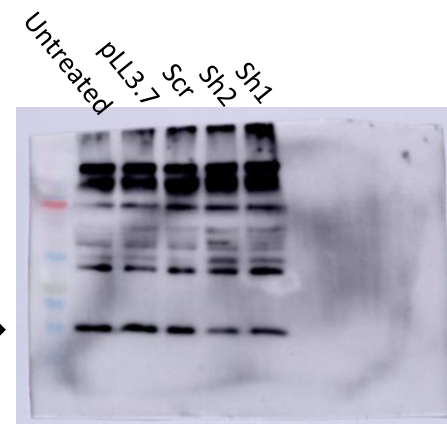
◀ Tubulin

TIMM50 ▶  
TIMM17A ▶



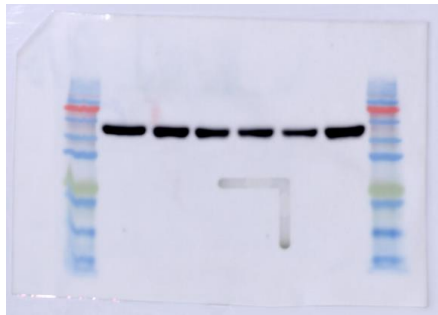
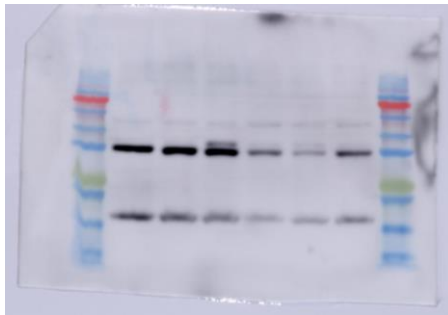
◀ Tubulin

TIMM17A ▶



◀ Tubulin

TIMM50 ▶  
TIMM17A ▶

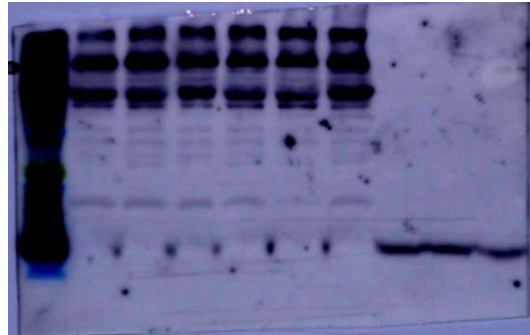


◀ Tubulin

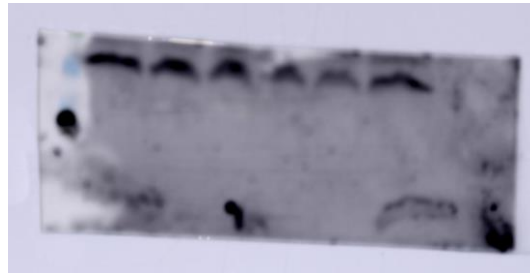
# TIMM17B

(Running order is Untreated / pLL3.7 control / Scr control / Sh1 / Sh2 / Sh3)

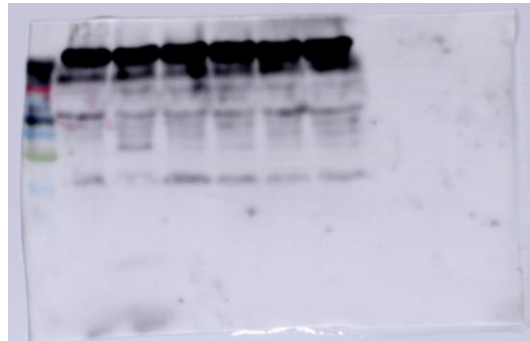
TIMM17B ▶



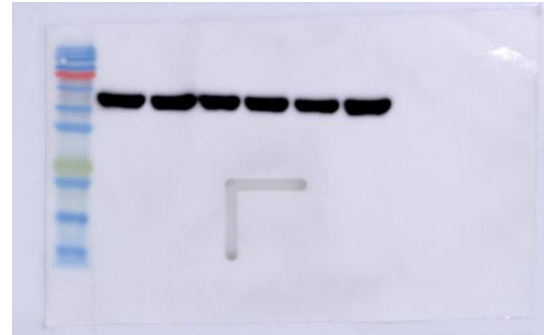
TIMM17B ▶  
(Upper part of the  
membrane was used  
for Timm21)



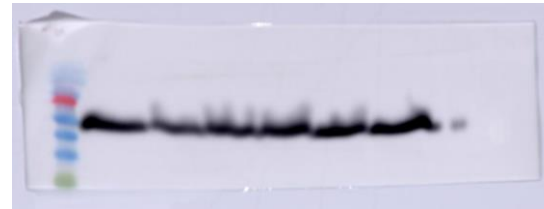
TIMM17B ▶



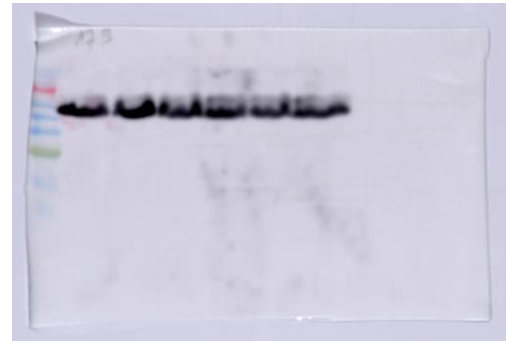
◀ Tubulin



◀ Tubulin



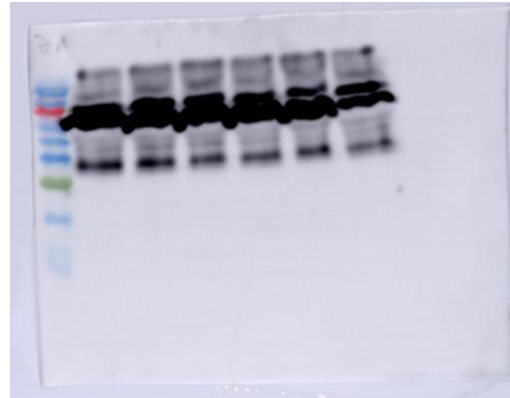
◀ Tubulin



# TIMM21

(Running order is Untreated / pLL3.7 control / Scr control / Sh1 / Sh2 / Sh3)

TIMM21 ▶



◀ Tubulin

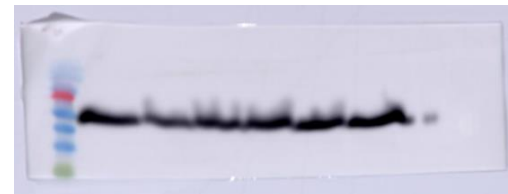


TIMM21 ▶

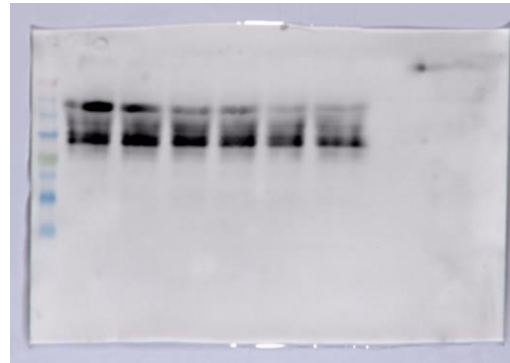
(Bottom part of the  
membrane was used  
for TIMM17B)



◀ Tubulin



TIMM21 ▶

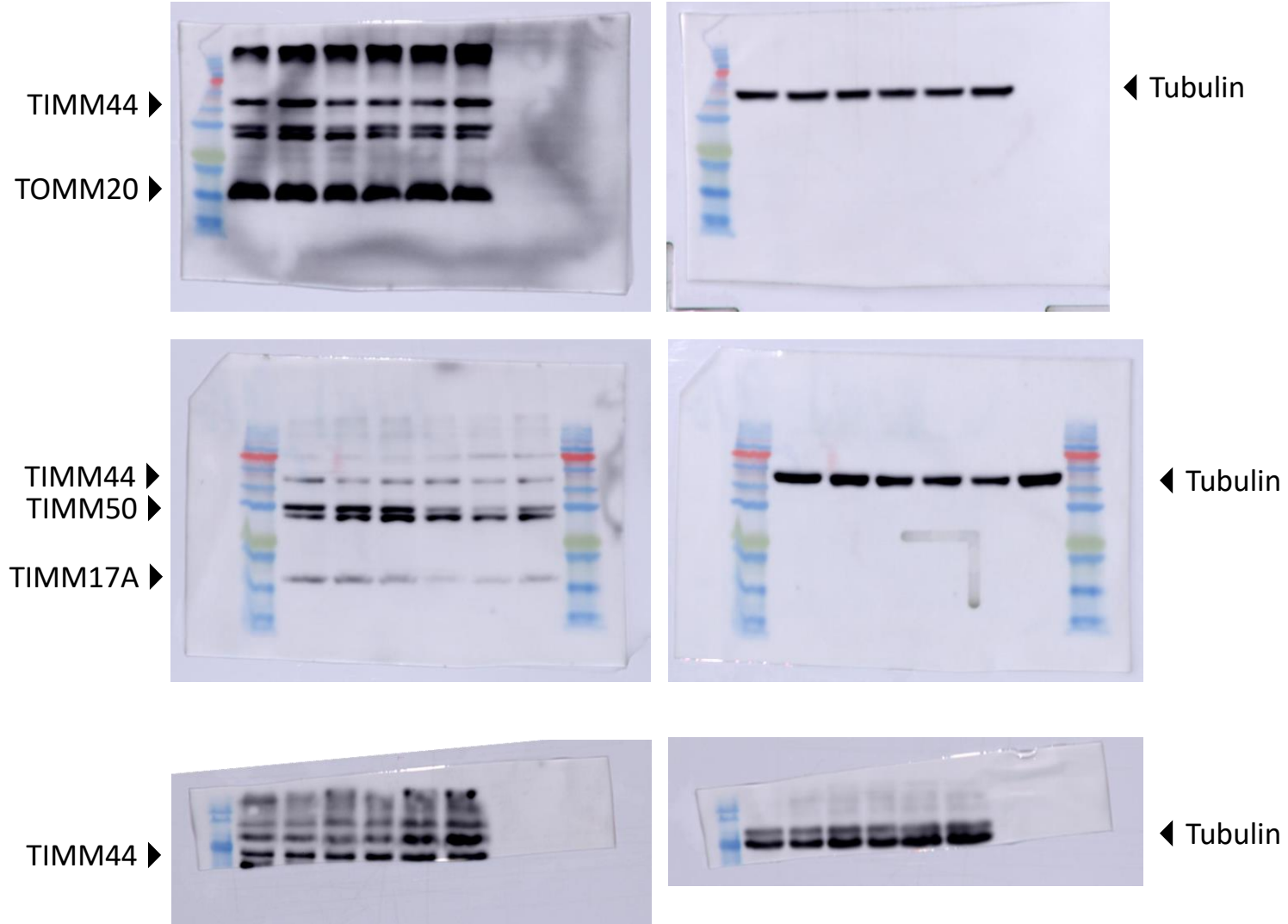


◀ Tubulin



# TIMM44

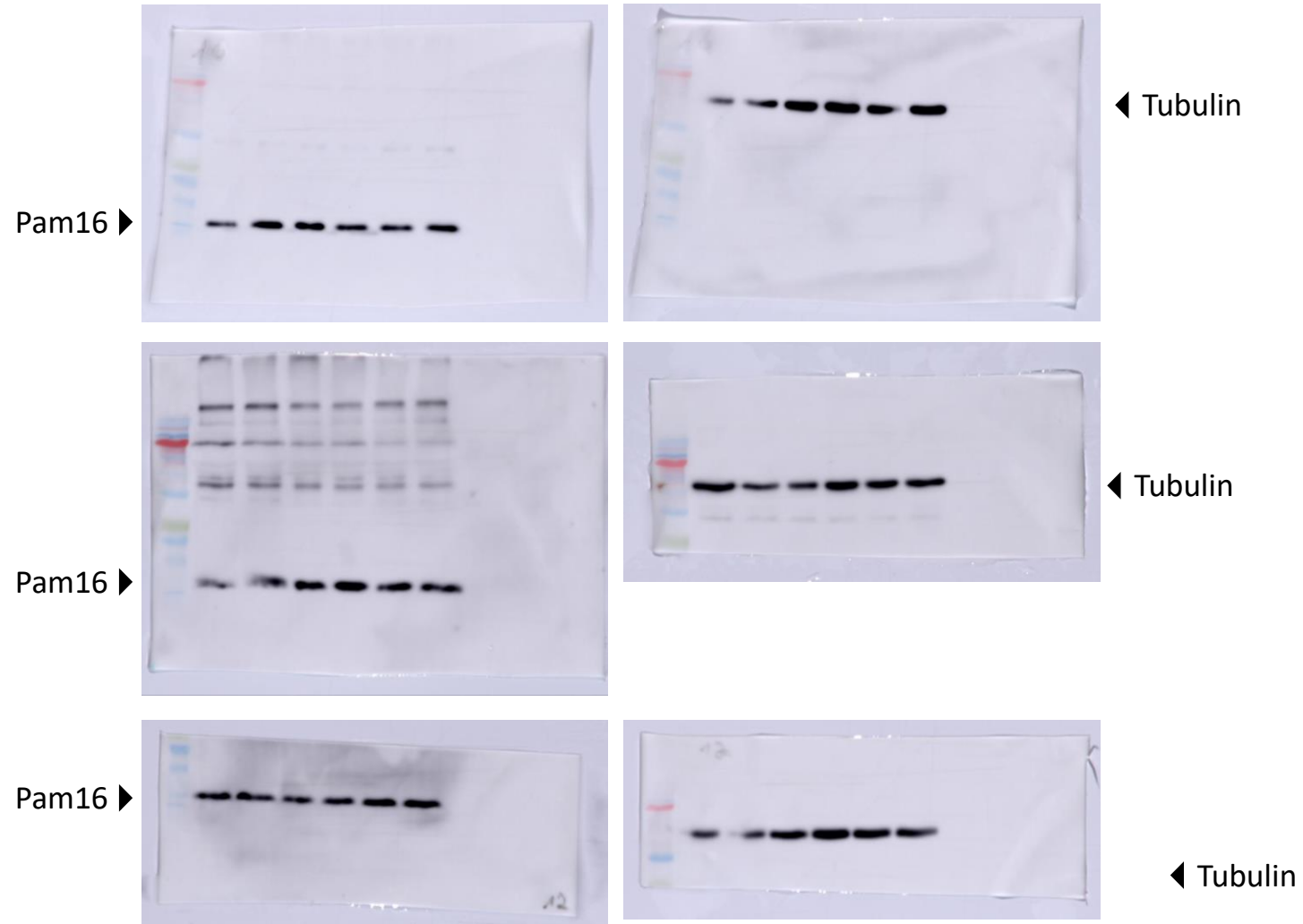
(Running order is Untreated / pLL3.7 control / Scr control / Sh1 / Sh2 / Sh3)





## Pam16

(Running order is Untreated / pLL3.7 control / Scr control / Sh1 / Sh2 / Sh3)

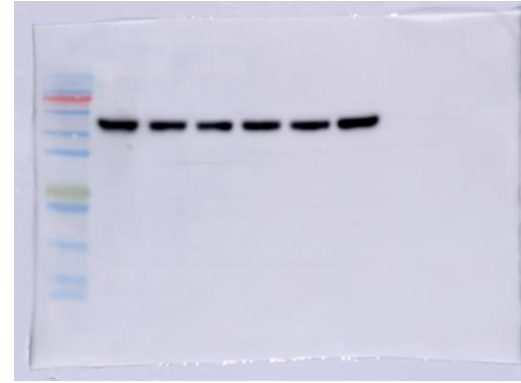
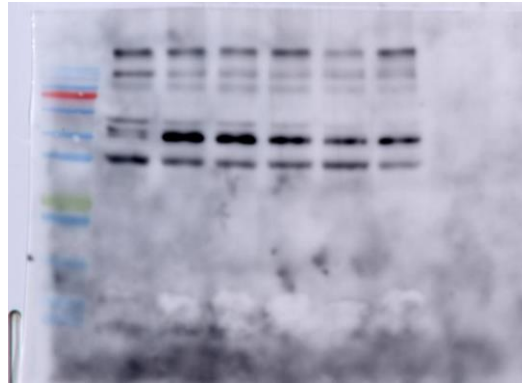




# TOMM40

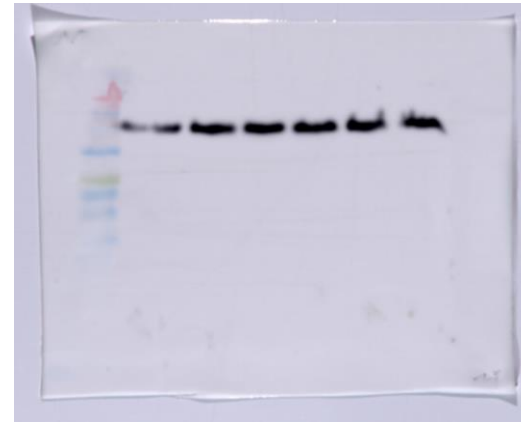
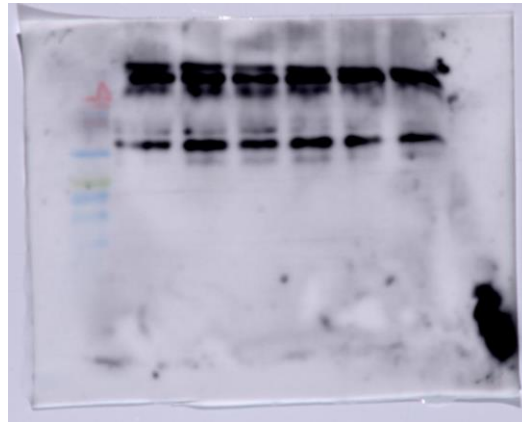
(Running order is Untreated / pLL3.7 control / Scr control / Sh1 / Sh2 / Sh3)

TOMM40 ►



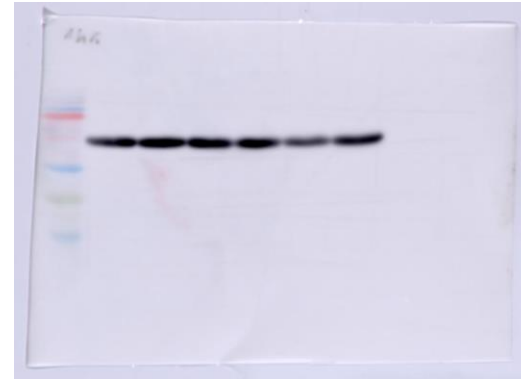
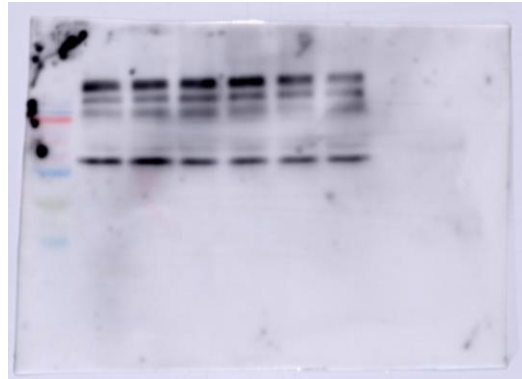
◄ Tubulin

TOMM40 ►



◄ Tubulin

TOMM40 ►

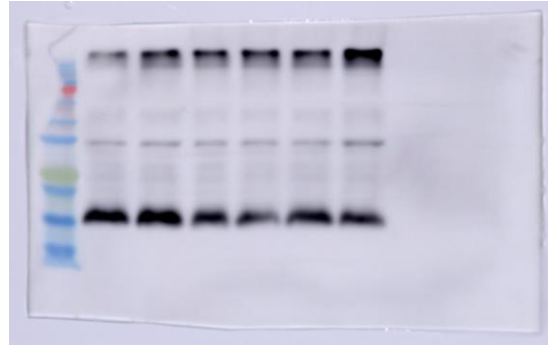


◄ Tubulin

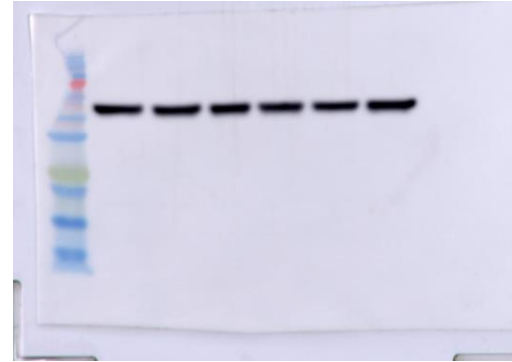
# TOMM20

(Running order is Untreated / pLL3.7 control / Scr control / Sh1 / Sh2 / Sh3)

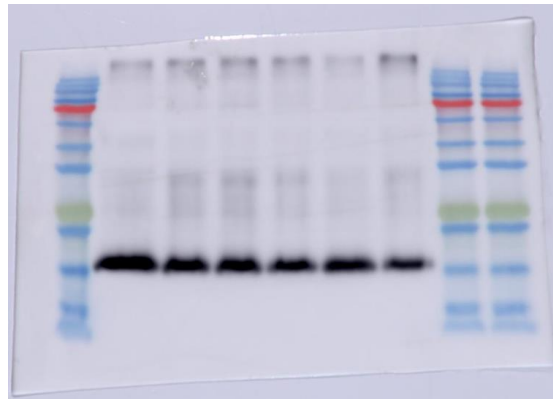
TOMM20 ►



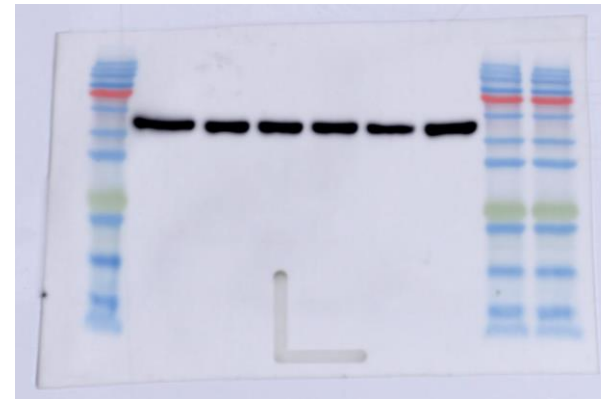
◄ Tubulin



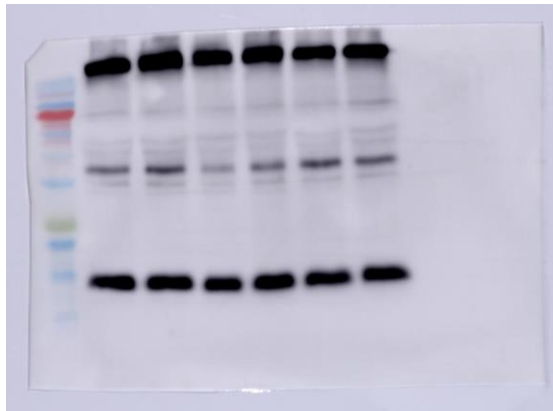
TOMM20 ►



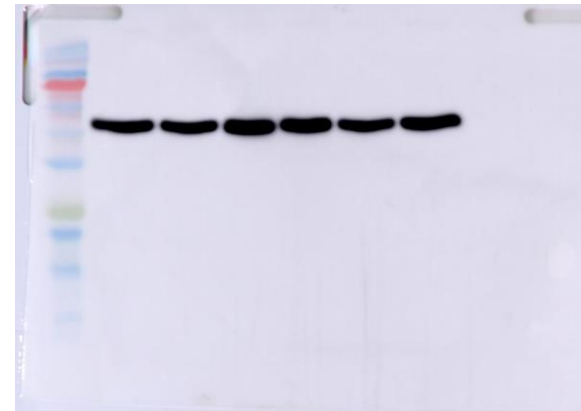
◄ Tubulin



TOMM20 ►



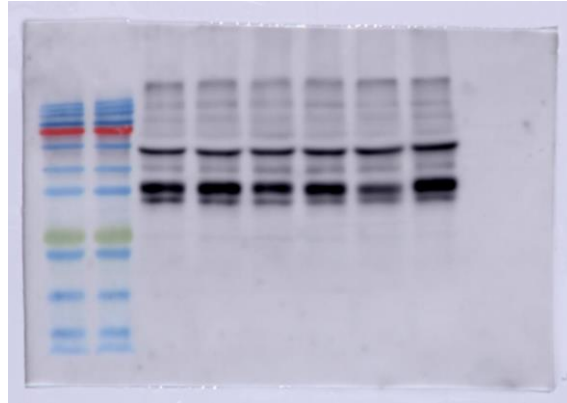
◄ Tubulin



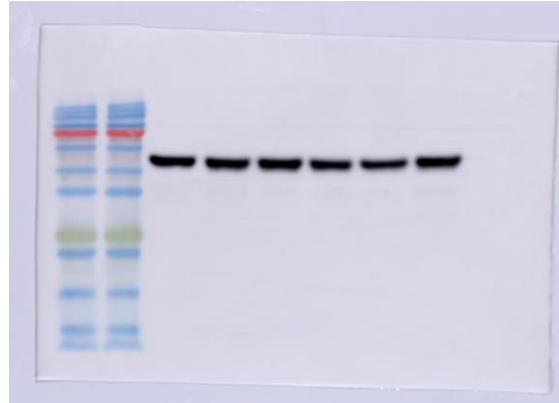
## mtHsp60

(Running order is Untreated / pLL3.7 control / Scr control / Sh1 / Sh2 / Sh3)

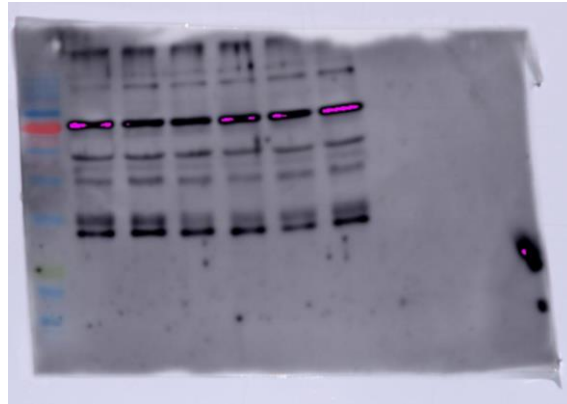
mtHsp60 ►



◄ Tubulin



Aconitase-2 ►  
mtHsp60 ►

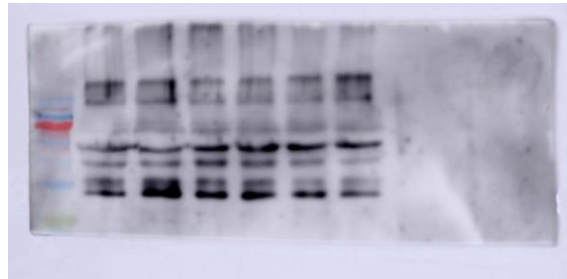


◄ Tubulin

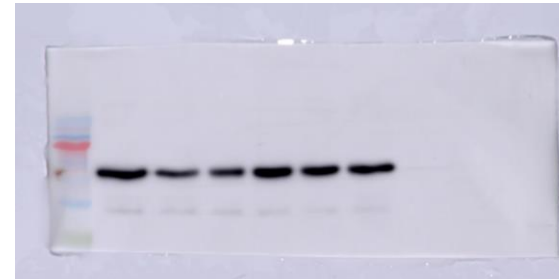


mtHsp60 ►

(Same membrane was used for Pam16 so the bottom was removed)



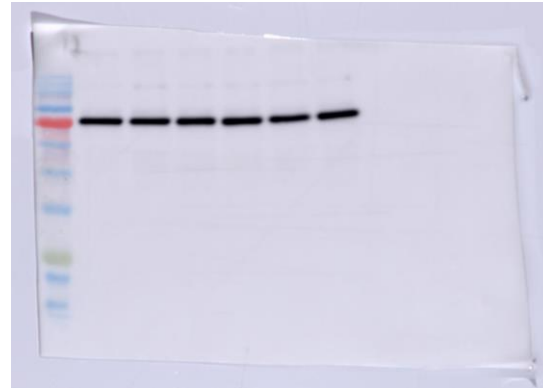
◄ Tubulin



## Aconitase-2

(Running order is Untreated / pLL3.7 control / Scr control / Sh1 / Sh2 / Sh3)

Aconitase-2 ▶

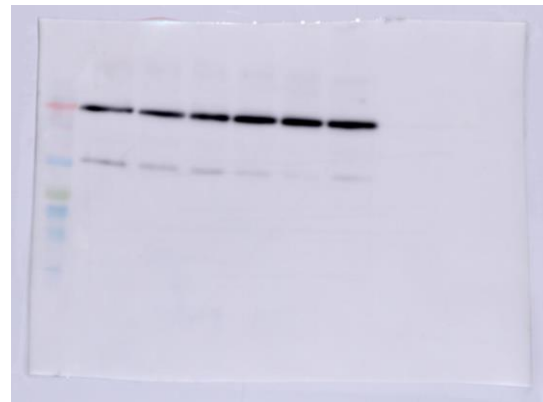


◀ Tubulin

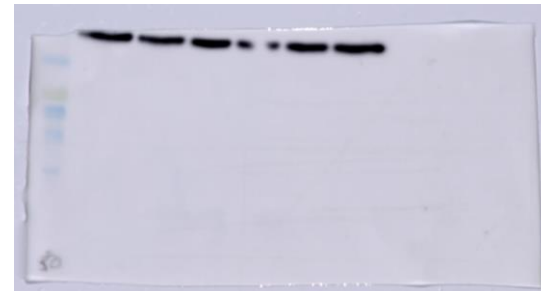


Aconitase-2 ▶

TIMM50 ▶

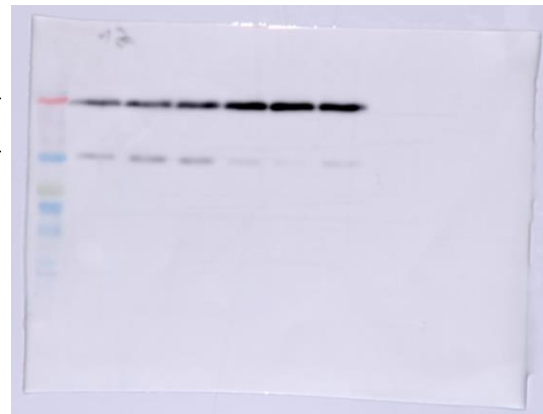


◀ Tubulin



Aconitase-2 ▶

TIMM50 ▶



◀ Tubulin

